

UNITED STATES SPACE STAMPS of ~~2000~~ - ~~Date~~ 2000s



The following pages represent the stamps and stationery issued by the United States beginning with the year 2000 which touch in some way upon the subject of outer space and/or its use and exploration, including its depiction in the media. Each is shown in unused condition along with an example canceled on the first day of use.

Since its beginning with the 3¢ Mount Palomar issue in 1948 depicting an astronomical observatory, this topic has traced developments of mankind's advances in space technology. The German V-2 missiles of World War II have led to increasingly more sophisticated vehicles, both manned and unmanned, designed to expand our knowledge of our neighborhood in the universe.

While honoring specific missions and personalities significant to the space program, it has also focused on the practical uses of space and possibilities for future achievements. What has been in the past deemed science fiction or pure fantasy has frequently become reality in an amazingly short period of time. The late Arthur C. Clarke, the respected author of "Space Odyssey 2001" and other speculative fiction, once commented that "mankind is too fragile to keep all its eggs in one basket." The dream expressed in that statement has since then become an achievable reality, with self-sufficient colonies orbiting in space, on the Moon, Mars or on the satellites of Jupiter or Saturn being more a matter of priorities and funding than yesteryear's wishful thinking. In the future, our country's postal emissions may portray a species expanding throughout the solar system, our galaxy and the universe rather than one confined to Earth, the island of its birth.

Sixty years have passed since the United States entered the Space Age and almost fifty since Apollo 11 landed on the Moon with its primitive vacuum-tube powered computers in 1969, and these pages try to illustrate how far we've come, and how different our lives would be without our satellite TV, cell phones and other devices we take for granted but which are commercial uses of technology originally developed for the space program.

UNITED STATES SPACE STAMPS

JANUARY 12, 2000

SPACE SHUTTLE PROGRAM

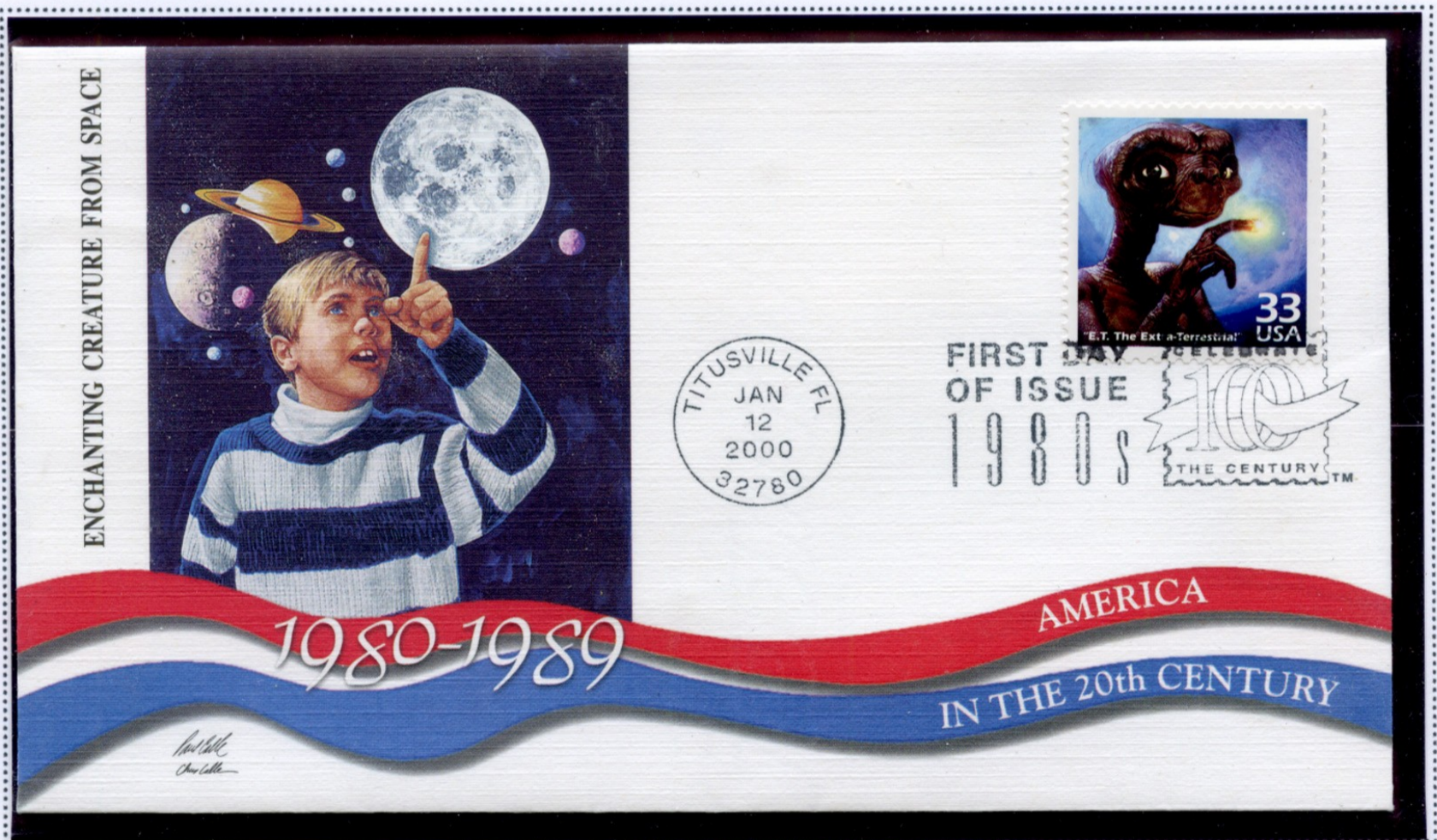


The design of a reusable spacecraft was begun in 1972, and was realized in the test ship *Enterprise*. *Enterprise* never flew in space, and it was *Columbia* which made the first successful shuttle space flight in April 1981. The shuttle marks a change of direction of space flight from solely exploration to a viable transportation medium.

UNITED STATES SPACE STAMPS

JANUARY 12, 2000

E.T. - THE EXTRATERRESTRIAL



E.T. was the leading character in a block-buster movie in which he is an alien stranded on Earth who cannot contact his home. Through interaction with a human family he is able to eventually return to his native planet. The movie spawned many spin-offs in the way of toys and appealed to children and adults alike.

1980s

Celebrate The Century™

TECHNOLOGY ■ ENTERTAINMENT ■ SCIENCE ■

1980s

CELEBRATE THE CENTURY™

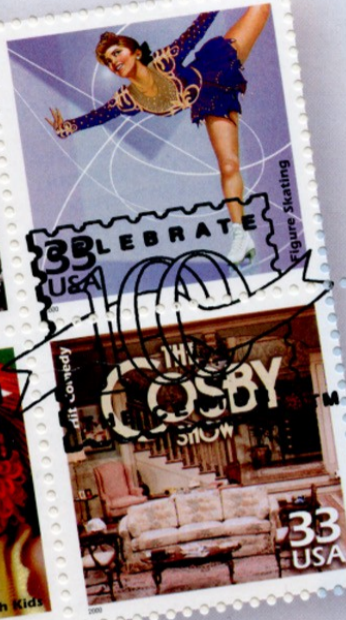
HISTORICAL EVENTS

POLITICAL FIGURES

LIFESTYLE

SPORTS

ART



Space Shuttle Launched, Berlin Wall Falls

The space shuttle *Columbia*, the first reusable spacecraft, was originally launched April 12, 1981. Sandra Day O'Connor became the first female justice on the U.S. Supreme Court, and Sally Ride became the first American woman in space. The Iran-Contra hearings made headlines. Several events signaled the easing of international tensions. In December 1987 President Ronald Reagan and Soviet leader Mikhail Gorbachev signed a nuclear arms reduction treaty. The fall of the Berlin Wall in November 1989 presaged the end of the Cold War. The Vietnam Veterans Memorial was dedicated November 13, 1982. A new national holiday, Martin Luther King Day, was first celebrated in January 1986. The growth of cable television, video games, and compact discs had a major impact on home entertainment. *Dallas* and *The Cosby Show* topped TV ratings. Hip-hop culture and music videos gained popularity.

New Words: yuppie, infomercial, biodiversity



UNITED STATES SPACE STAMPS

APRIL 10, 2000

EDWIN POWELL HUBBLE & HUBBLE SPACE TELESCOPE



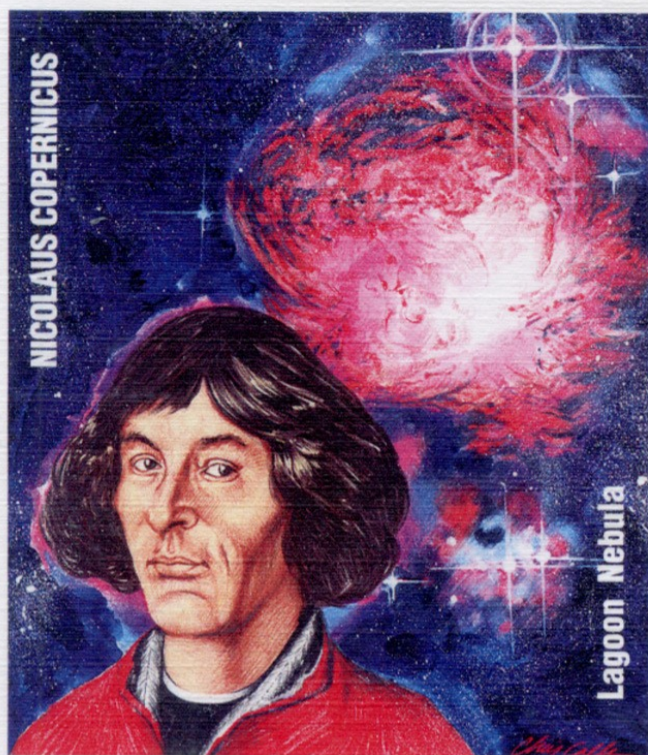
Edwin Hubble, astronomer, had laid much of the groundwork for advances in his field by the late 1920s. His measurements of variable stars proved that nebulas were distant galaxies outside the Milky Way, our local galaxy. The phenomenon of "red shift" whereby light from an object shows spectrum shifts in color according to its motion toward or away from us intrigued him and led to the discovery of the expansion of the universe.

The Hubble Space telescope was named in his honor and was used to take the photographs on these stamps. The sheet was issued on the telescope's tenth anniversary of launching. Initially, the telescope was plagued by focus problems caused by some miscalculations in the mirror design, but these were corrected by an additional module installed in space by the crew of the shuttle *Endeavor* in December 1993

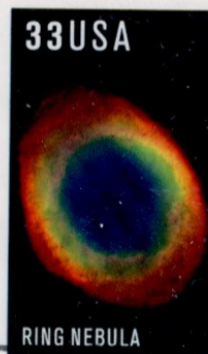
UNITED STATES SPACE STAMPS

APRIL 10, 2000

EDWIN POWELL HUBBLE & HUBBLE SPACE TELESCOPE



FIRST DAY OF ISSUE



FIRST DAY OF ISSUE

UNITED STATES SPACE STAMPS

APRIL 10, 2000

EDWIN POWELL HUBBLE & HUBBLE SPACE TELESCOPE



UNITED STATES SPACE STAMPS

APRIL 10, 2000

EDWIN POWELL HUBBLE & HUBBLE SPACE TELESCOPE

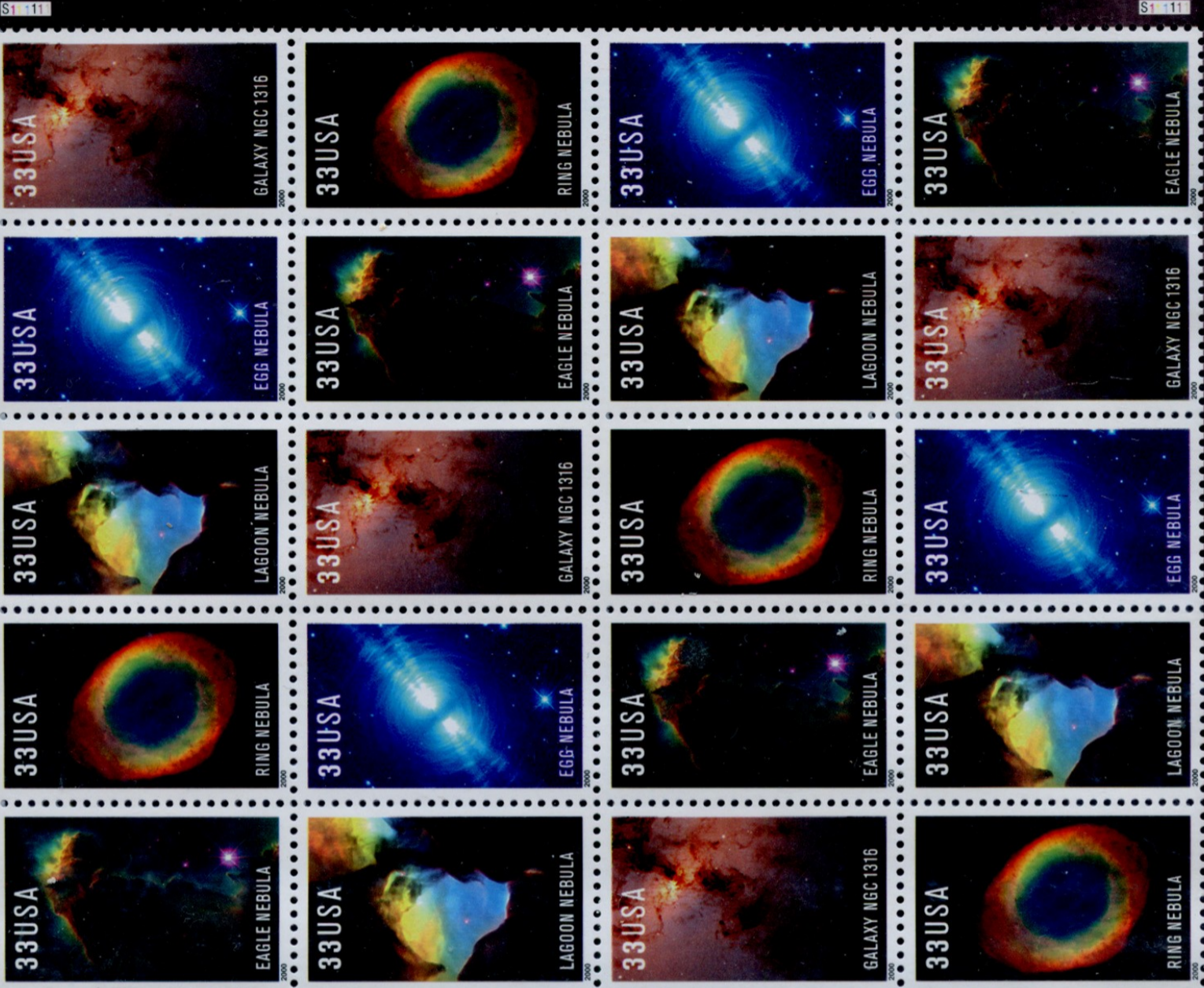


PLATE POSITION

20 X .33 = \$6.60

© USPS 1999

Visit World Stamp Expo 2000, Anaheim, California, July 7-16, 2000

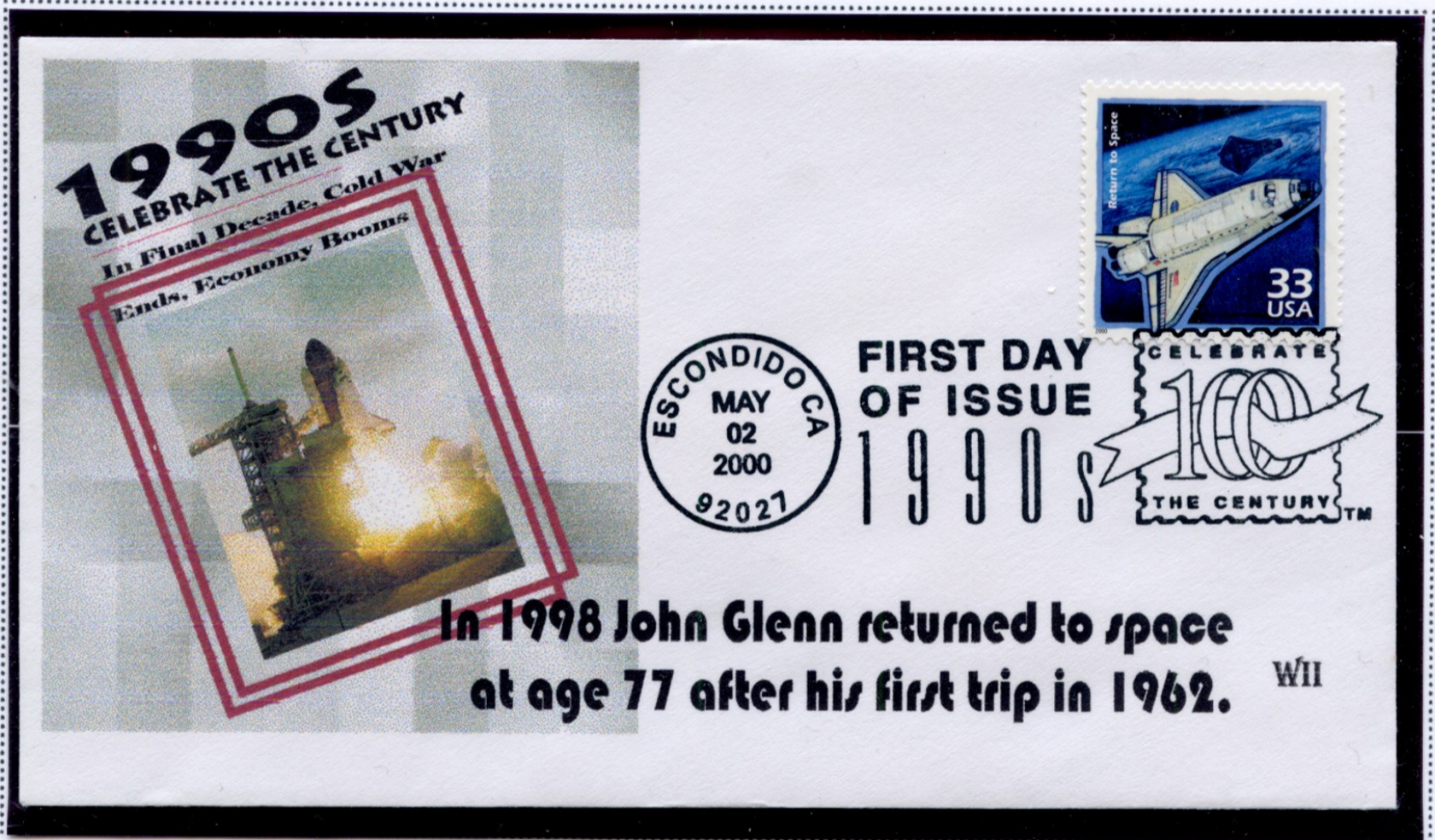
Images from the
Hubble Space Telescope
named in honor of
distinguished
American astronomer
EDWIN POWELL HUBBLE



UNITED STATES SPACE STAMPS

MAY 2, 2000

SPACE SHUTTLE PROGRAM



The design of a reusable spacecraft was begun in 1972, and was realized in the test ship *Enterprise*. *Enterprise* never flew in space, and it was *Columbia* which made the first successful shuttle space flight in April 1981. The shuttle marks a change of direction of space flight from solely exploration to a viable transportation medium.

1990s

Celebrate The Century™

TECHNOLOGY ■ ENTERTAINMENT ■ SCIENCE

1990s

CELEBRATE THE CENTURY®

In Final Decade, Cold War Ends, Economy Booms

The Soviet Union collapsed, effectively ending the Cold War. Troops were deployed by the United States in the Persian Gulf, in Somalia, and in the Balkans. In 1992—often called the Year of the Woman—a record number of women were elected to political office. American astronauts joined Russian cosmonauts on the Mir space station, and Mars Pathfinder and Mars Global Surveyor sent back extraordinary images of the red planet. A grouping of planets resembling our solar system was found by astronomers. The World Wide Web and e-mail revolutionized communications. Millions of Americans bought cellular phones as service expanded. In Washington, D.C., the Holocaust Museum drew huge crowds while in Los Angeles, the Getty Center's architecture got rave reviews. Moviegoers flocked to see *Titanic* and *Jurassic Park*. Extreme sports, such as snowboarding and BMX biking, attracted young people, and the U.S. women's softball, soccer, and basketball teams proved themselves the best in the world. New words: e-commerce, Web site, Y2K



HISTORICAL EVENTS
SPORTS
ART

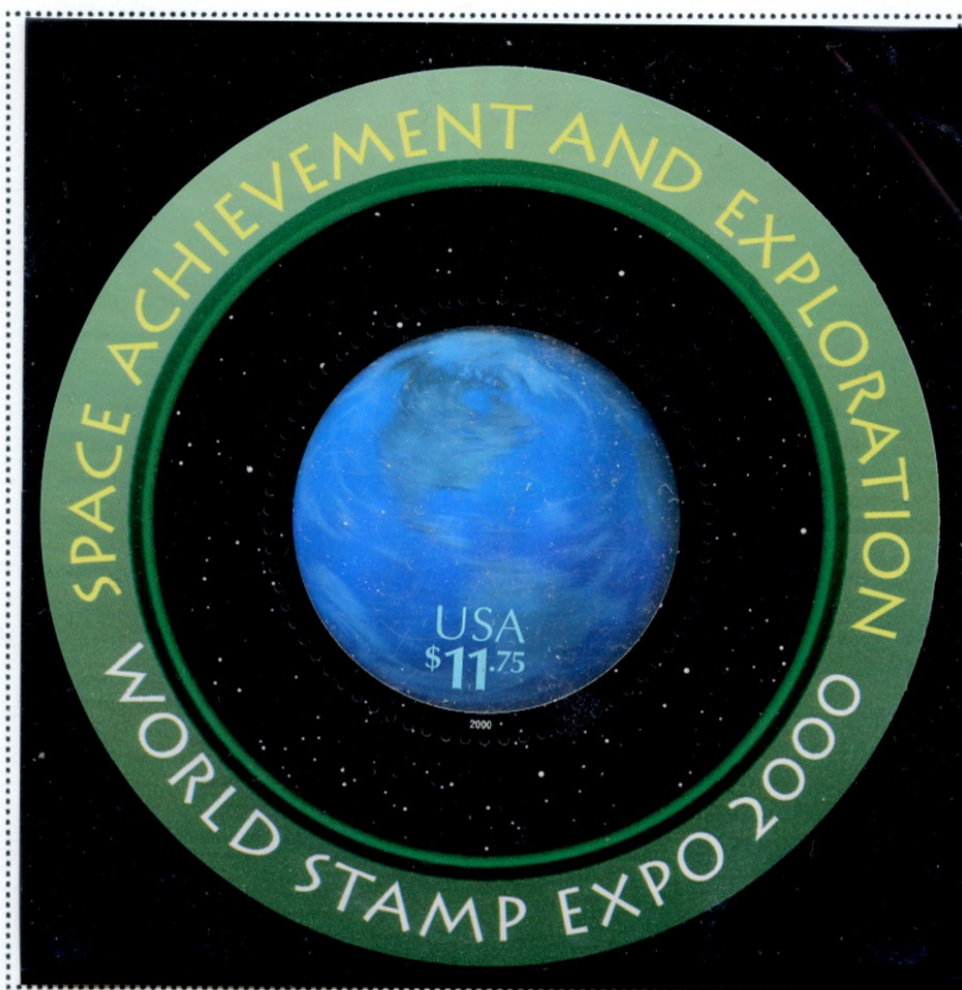
POLITICAL FIGURES
LIFE
NATURE



UNITED STATES SPACE STAMPS

JULY 7, 2000

SPACE ACHIEVEMENT AND EXPLORATION - WORLD STAMP EXPO 2000



Showing a hologram of Earth from space, this \$11.75 circular stamp fills the Express Mail rate and is part of a series of five miniature sheets issued for World Stamp Expo 2000.

UNITED STATES SPACE STAMPS

JULY 8, 2000

LANDING ON THE MOON



Another in the Stamp Expo series, this stamp shows a lunar landing module about to touch down on the surface. It also covers the Express Mail rate of \$11.75.

UNITED STATES SPACE STAMPS

SPACE ACHIEVEMENT AND EXPLORATION - WORLD STAMP EXPO 2000

SPACE ACHIEVEMENT AND EXPLORATION



FIRST DAY OF ISSUE



LANDING ON THE MOON

SPACE ACHIEVEMENT AND EXPLORATION



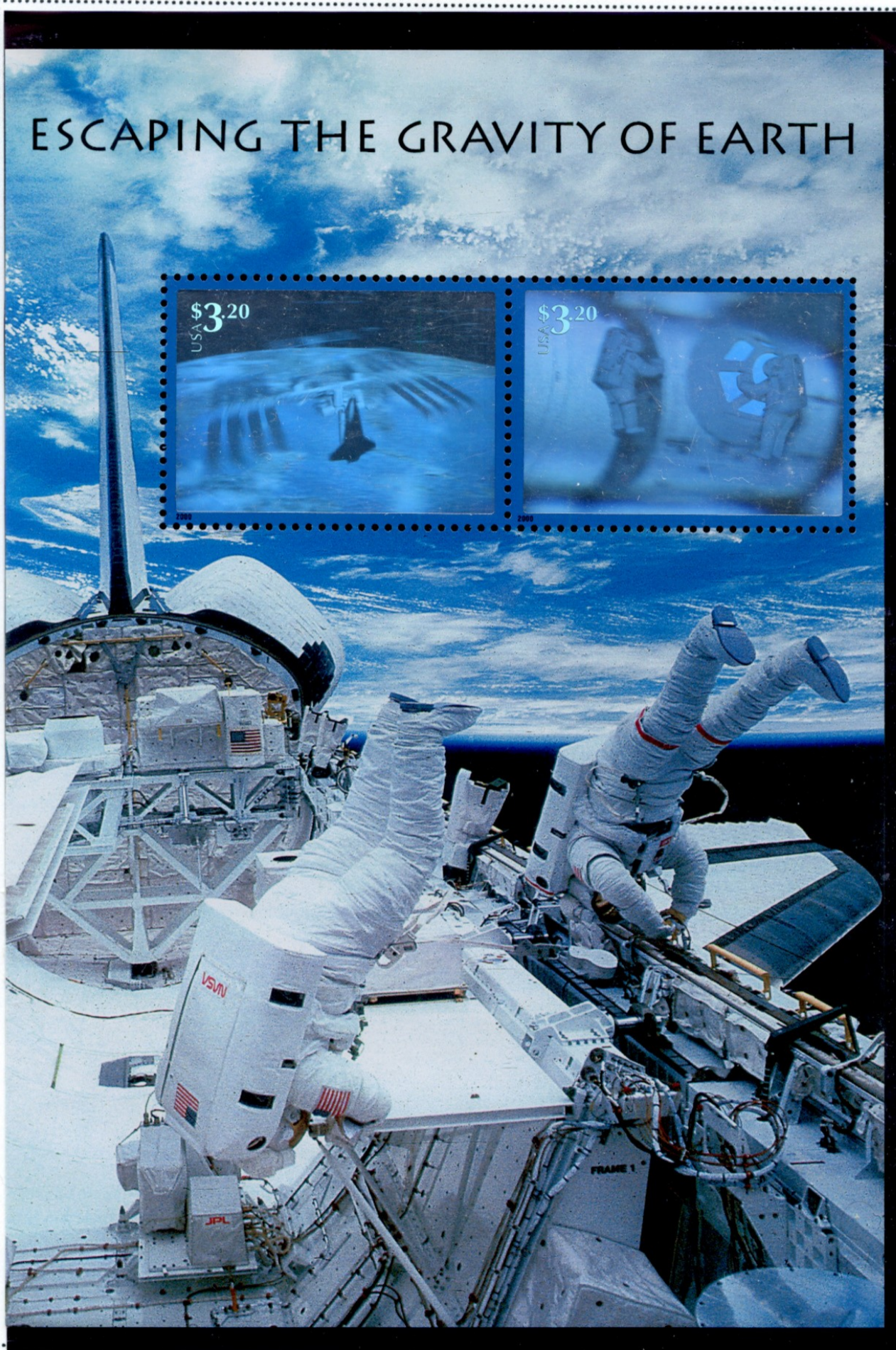
FIRST DAY OF ISSUE



UNITED STATES SPACE STAMPS

JULY 9, 2000

ESCAPING THE GRAVITY OF EARTH



This sheet containing two \$3.20 holographic Priority Mail stamps shows astronauts working in space on construction of the space station. The sheet's background shows two astronauts working in the cargo bay of a space shuttle.

UNITED STATES SPACE STAMPS

ESCAPING THE GRAVITY OF EARTH

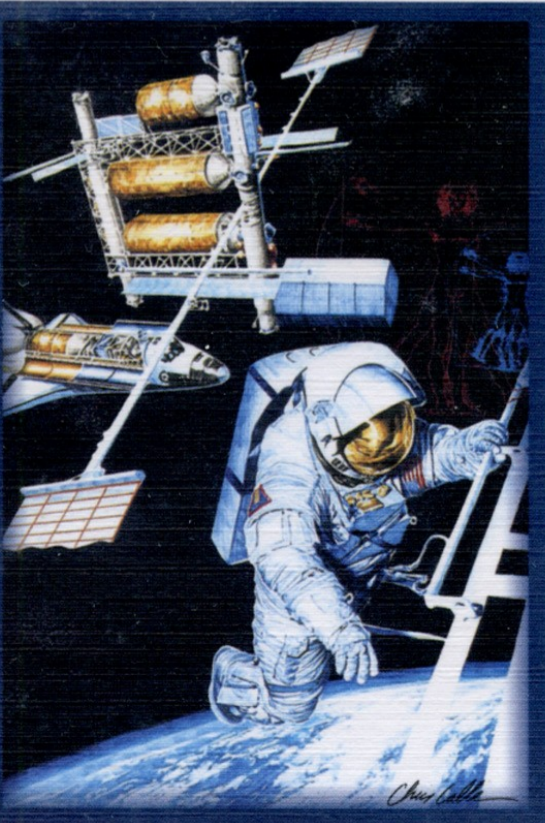
SPACE ACHIEVEMENT AND EXPLORATION



FIRST DAY OF ISSUE

ESCAPING THE GRAVITY OF EARTH

SPACE ACHIEVEMENT AND EXPLORATION



FIRST DAY OF ISSUE

UNITED STATES SPACE STAMPS

PROBING THE VASTNESS OF SPACE

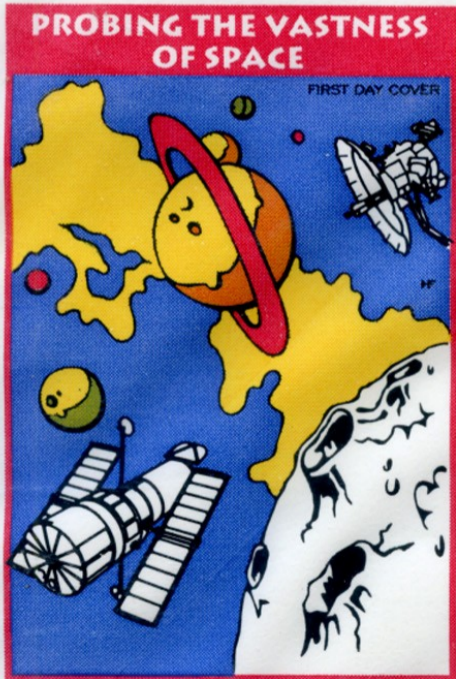


WORLD STAMP EXPO 2000



FIRST DAY OF ISSUE

PROBING THE VASTNESS OF SPACE



WORLD STAMP EXPO 2000



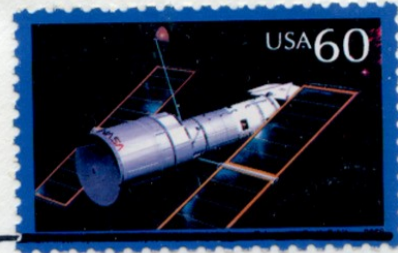
FIRST DAY OF ISSUE

UNITED STATES SPACE STAMPS

PROBING THE VASTNESS OF SPACE

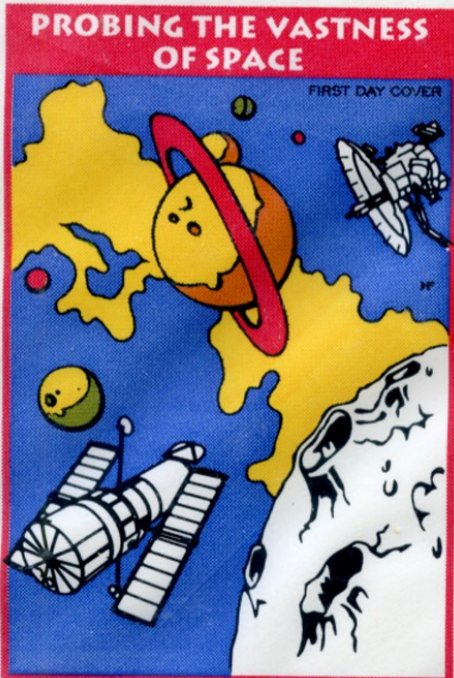


WORLD STAMP EXPO 2000



FIRST DAY OF ISSUE

PROBING THE VASTNESS OF SPACE



WORLD STAMP EXPO 2000



FIRST DAY OF ISSUE

UNITED STATES SPACE STAMPS

PROBING THE VASTNESS OF SPACE

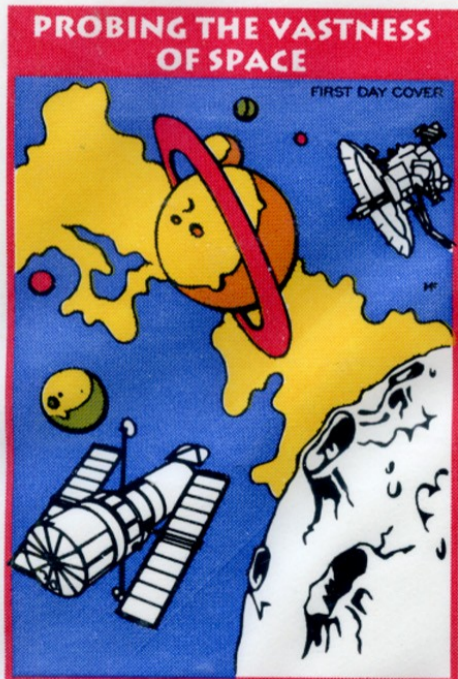


WORLD STAMP EXPO 2000



FIRST DAY OF ISSUE

PROBING THE VASTNESS OF SPACE



WORLD STAMP EXPO 2000

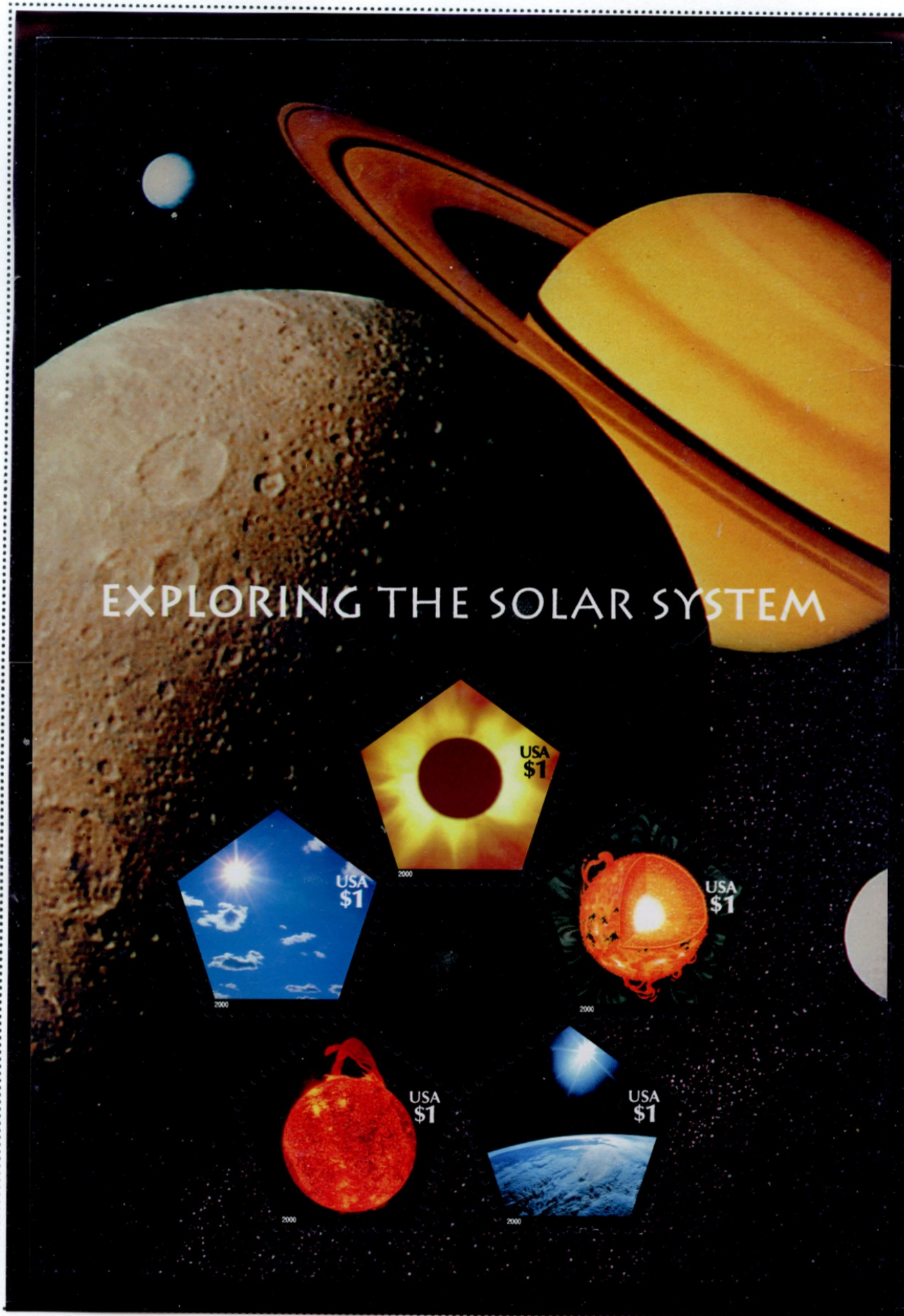


FIRST DAY OF ISSUE

UNITED STATES SPACE STAMPS

JULY 11, 2000

EXPLORING THE SOLAR SYSTEM



Consisting of five pentagonal \$1.00 stamps on a miniature sheet, the background shows Saturn in brilliant color. The individual stamps each feature some aspect of the Sun, including eclipses, a cutaway view and solar flares.

UNITED STATES SPACE STAMPS

EXPLORING THE SOLAR SYSTEM

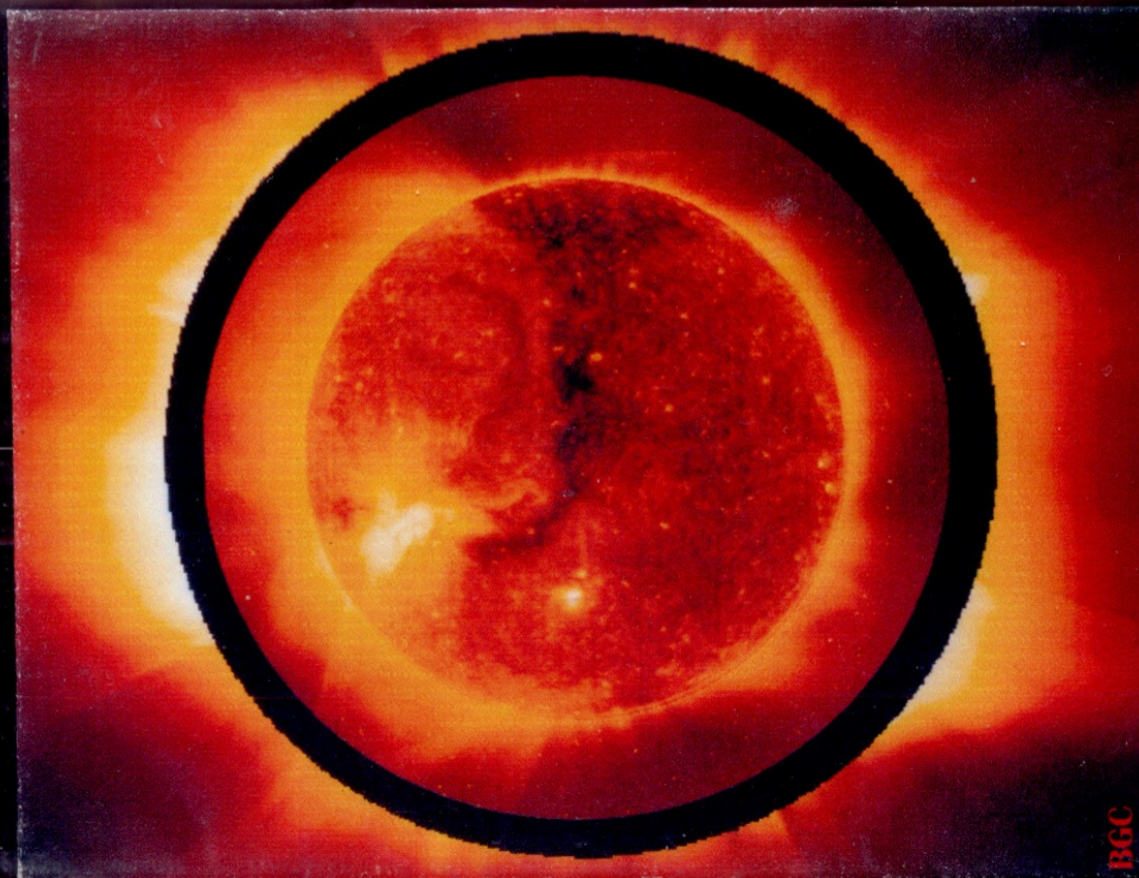
SPACE ACHIEVEMENT AND EXPLORATION

EXPLORING THE SOLAR SYSTEM
\$1.00 PENTAGONAL STAMP



Ice caps on Mars, seen here (left) in an image taken by the Hubble Space Telescope, tipped off early astronomers that Mars might have an atmosphere. The small image (right) is the giant volcano Olympus Mons taken during the Viking missions to Mars

EXPLORING THE SOLAR SYSTEM



SPACE ACHIEVEMENT AND EXPLORATION
EXPLORING THE SOLAR SYSTEM
\$1.00 PENTAGONAL STAMP

Composite image of the Sun taken in ultraviolet, showing its outer atmosphere or corona and solar wind.



UNITED STATES SPACE STAMPS

EXPLORING THE SOLAR SYSTEM

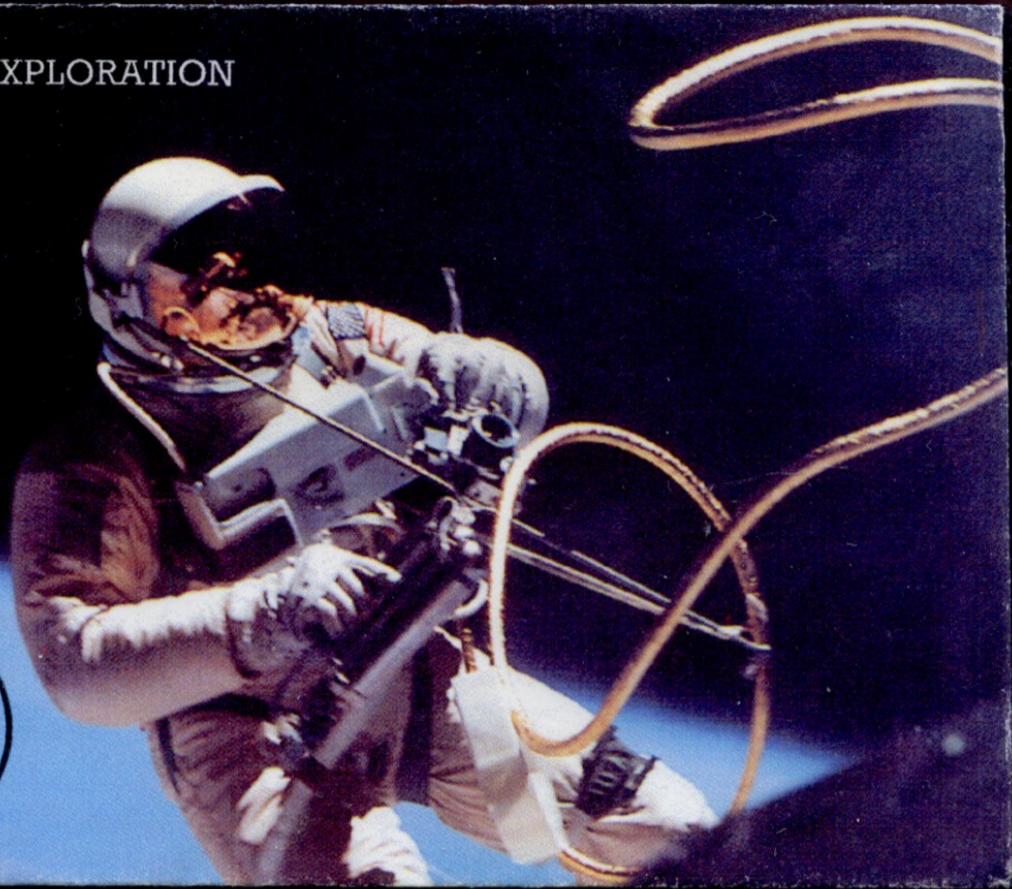
SPACE ACHIEVEMENT AND EXPLORATION

EXPLORING THE SOLAR SYSTEM
\$1.00 PENTAGONAL STAMP

During his 22-minute space walk on the Gemini IV mission, astronaut Ed White wore an emergency oxygen supply chest pack. White and command pilot Jim McDivitt began the tradition of wearing American flag patches on their pressure suits.



BGC



EXPLORING THE SOLAR SYSTEM

SPACE ACHIEVEMENT AND EXPLORATION

EXPLORING THE SOLAR SYSTEM
\$1.00 PENTAGONAL STAMP



BGC

UNITED STATES SPACE STAMPS

EXPLORING THE SOLAR SYSTEM

THE LAST DAYS ON THE MOON!

Apollo 17 Commander Gene Cernan test drives the lunar rover, prior to a spin across the valley of Taurus-Littrow.



SPACE ACHIEVEMENT AND EXPLORATION
EXPLORING THE SOLAR SYSTEM -
\$1.00 PENTAGONAL STAMP

UNITED STATES SPACE STAMPS

JULY 13, 2000

STAMPIN' THE FUTURE



The Stampin' the Future miniature sheet consists of four se-tenant designs chosen from submissions by children representing their conceptions of the new millennium. The winning designs were created by two 9 year olds and two 11 year olds, whose names appear in the stamp margins. The issue also is a joint issue with Canada.

UNITED STATES SPACE STAMPS

STAMPIN' THE FUTURE



Children



FIRST DAY OF ISSUE

STAMPIN' THE FUTURE



Rocket



FIRST DAY OF ISSUE

UNITED STATES SPACE STAMPS

STAMPIN' THE FUTURE



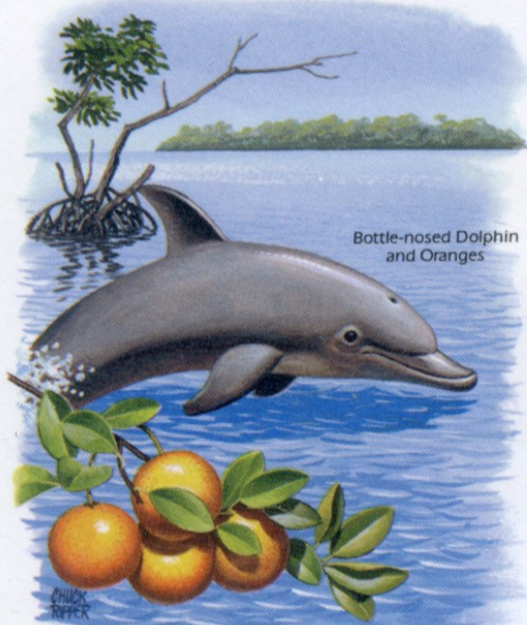
UNITED STATES SPACE STAMPS

APRIL 4, 2002

GREETINGS FROM AMERICA



Official First Day of Issue



ArtCraft Greetings from Florida

The "Greetings" pane of 50 se-tenant stamps was designed to emulate the appearance of picture postcards of the 1940s and 1950s. Each state was represented by some of its tourist attractions, and the Florida stamp illustrates its beaches and a launch of the space shuttle from the Kennedy Space Center at Cape Canaveral, (now Cape Kennedy).

UNITED STATES SPACE STAMPS

OCTOBER 25, 2002

GREETINGS FROM AMERICA



The "Greetings" pane of 50 se-tenant stamps that was issued earlier in 2002 was re-issued in the same designs in October, but the denomination was raised to 37¢ from 34¢ to match the new first class rate.

UNITED STATES SPACE STAMPS

OCTOBER 5, 2005

CONSTELLATIONS



These stamps represent four of the constellations known to the ancient Greek culture. Leo the Lion supposedly came from the moon and terrorized the Earth till slain by Hercules. Lyra is the musical instrument carried by Orpheus in Hades. Pegasus, the winged horse, was ridden by Bellerophon when he attempted to fly to the gods on top of Mt. Olympus, and Orion the Hunter was a demi-god who claimed to be able to kill any animal.

UNITED STATES SPACE STAMPS

STAR WARS

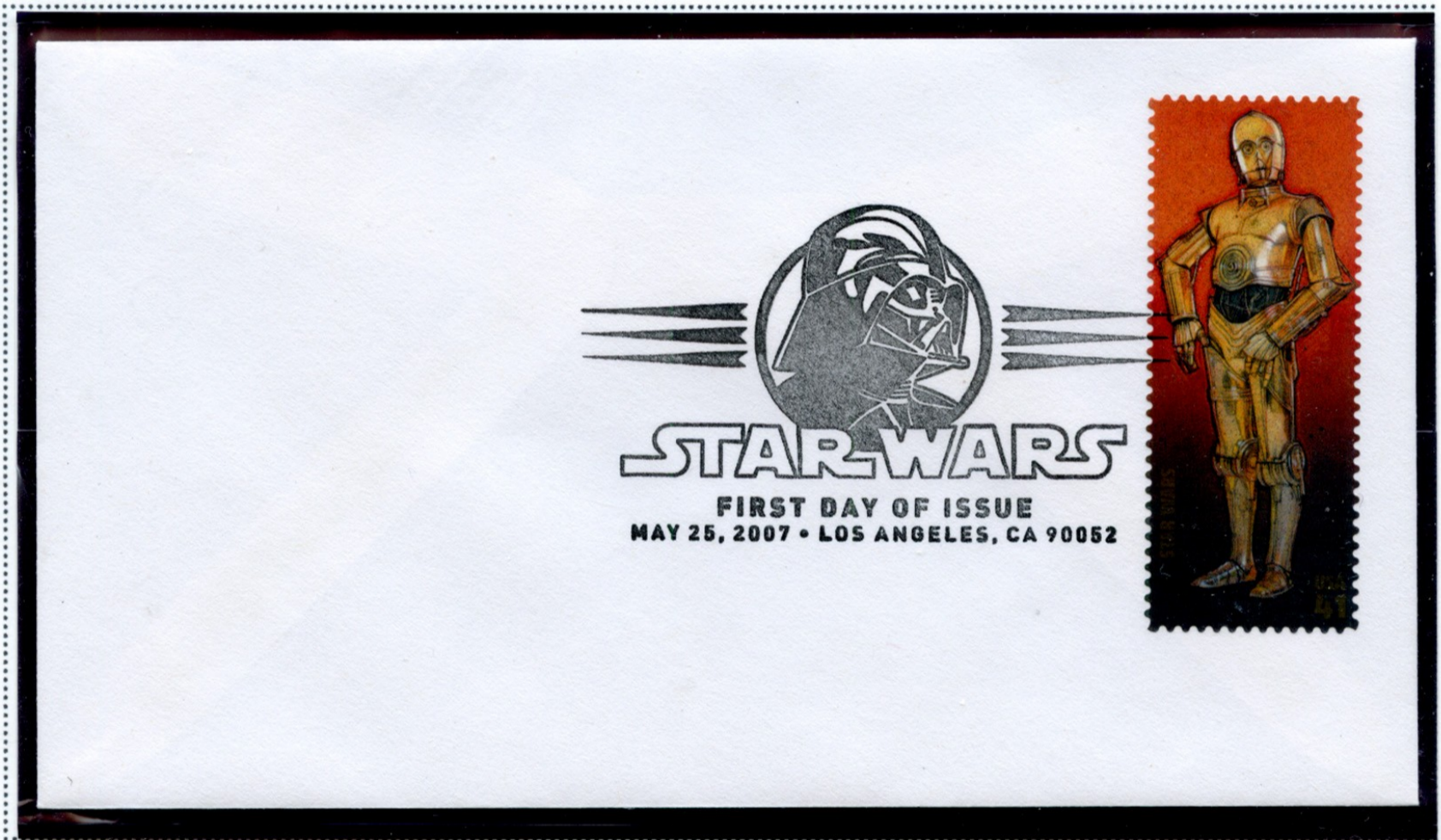


UNITED STATES SPACE STAMPS

MAY 25, 2007

STAR WARS

The miniature sheet on the previous page contains fifteen stamps, each one depicting a character or object from the popular "Star Wars" movie series. They are of many different shapes and sizes. In addition, a revised "Yoda" stamp was issued separately in October.



UNITED STATES SPACE STAMPS

STAR WARS



STAR WARS



UNITED STATES SPACE STAMPS

STAR WARS



STAR WARS

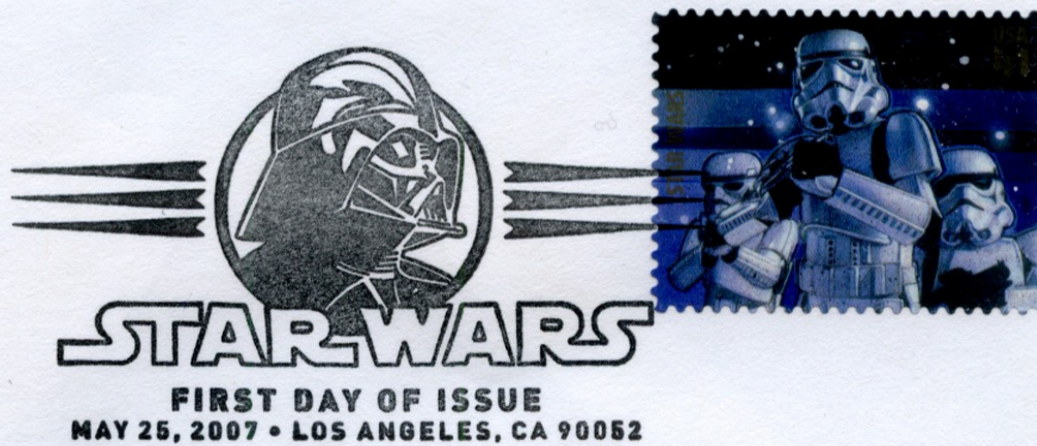


UNITED STATES SPACE STAMPS

STAR WARS

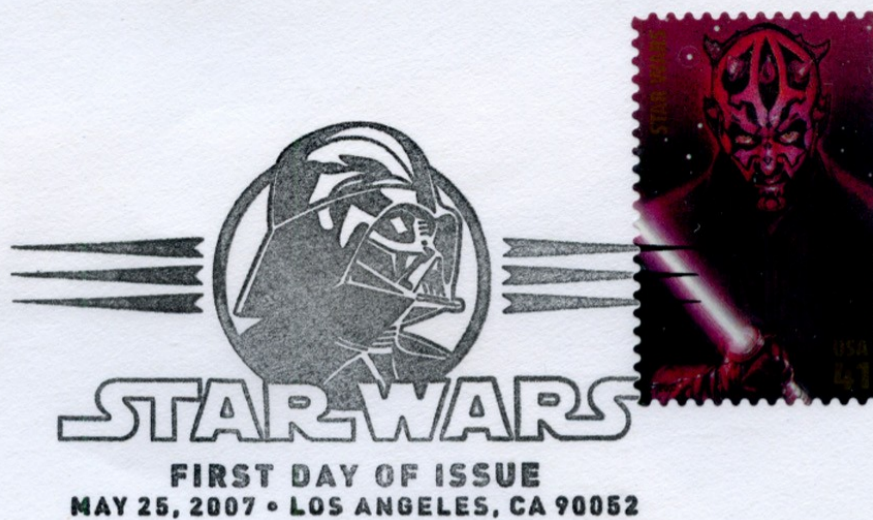


STAR WARS

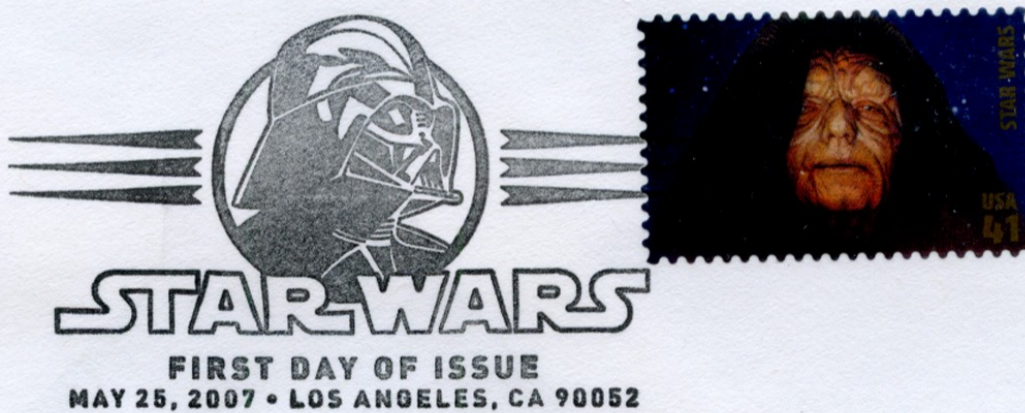


UNITED STATES SPACE STAMPS

STAR WARS

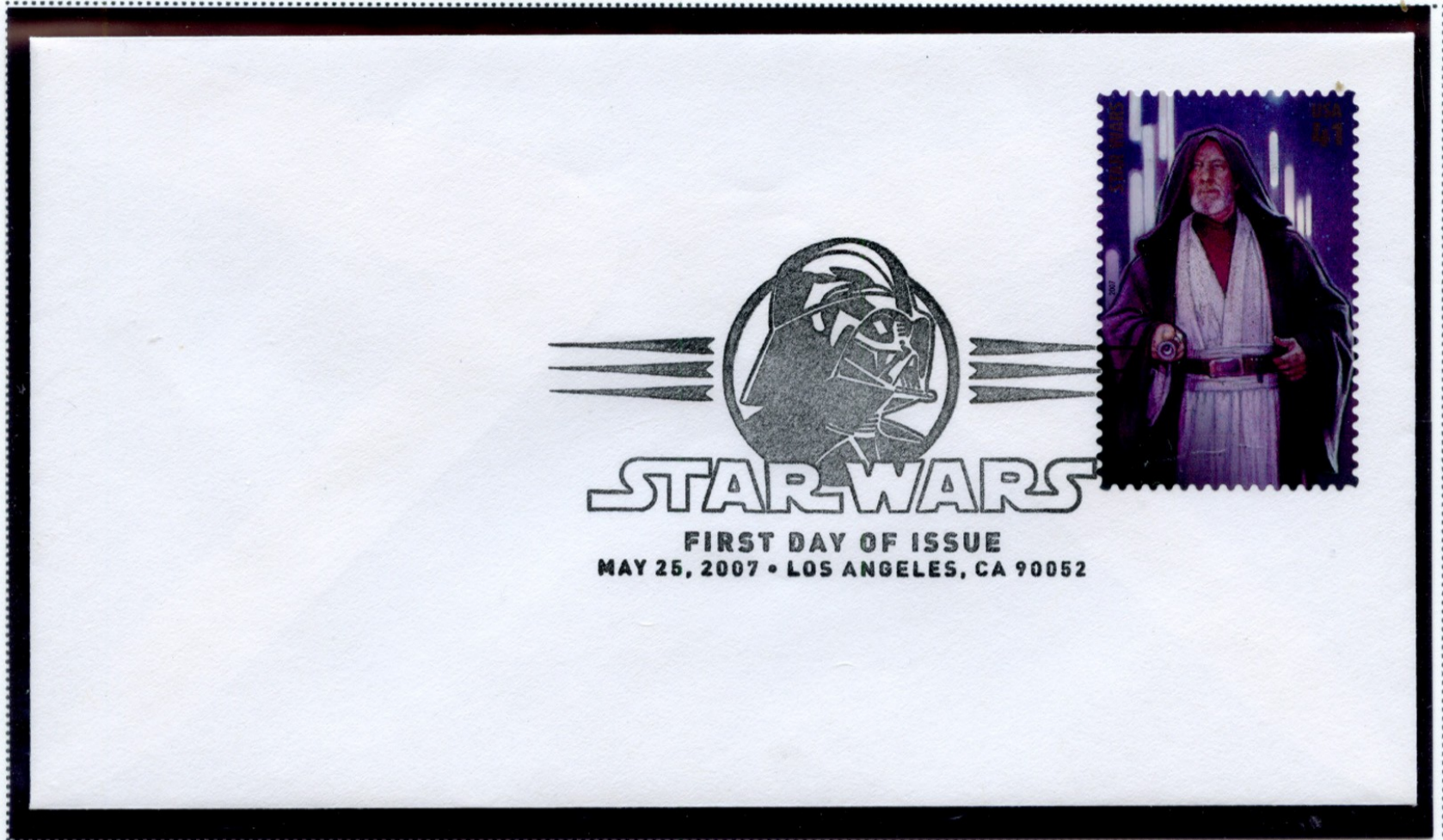


STAR WARS

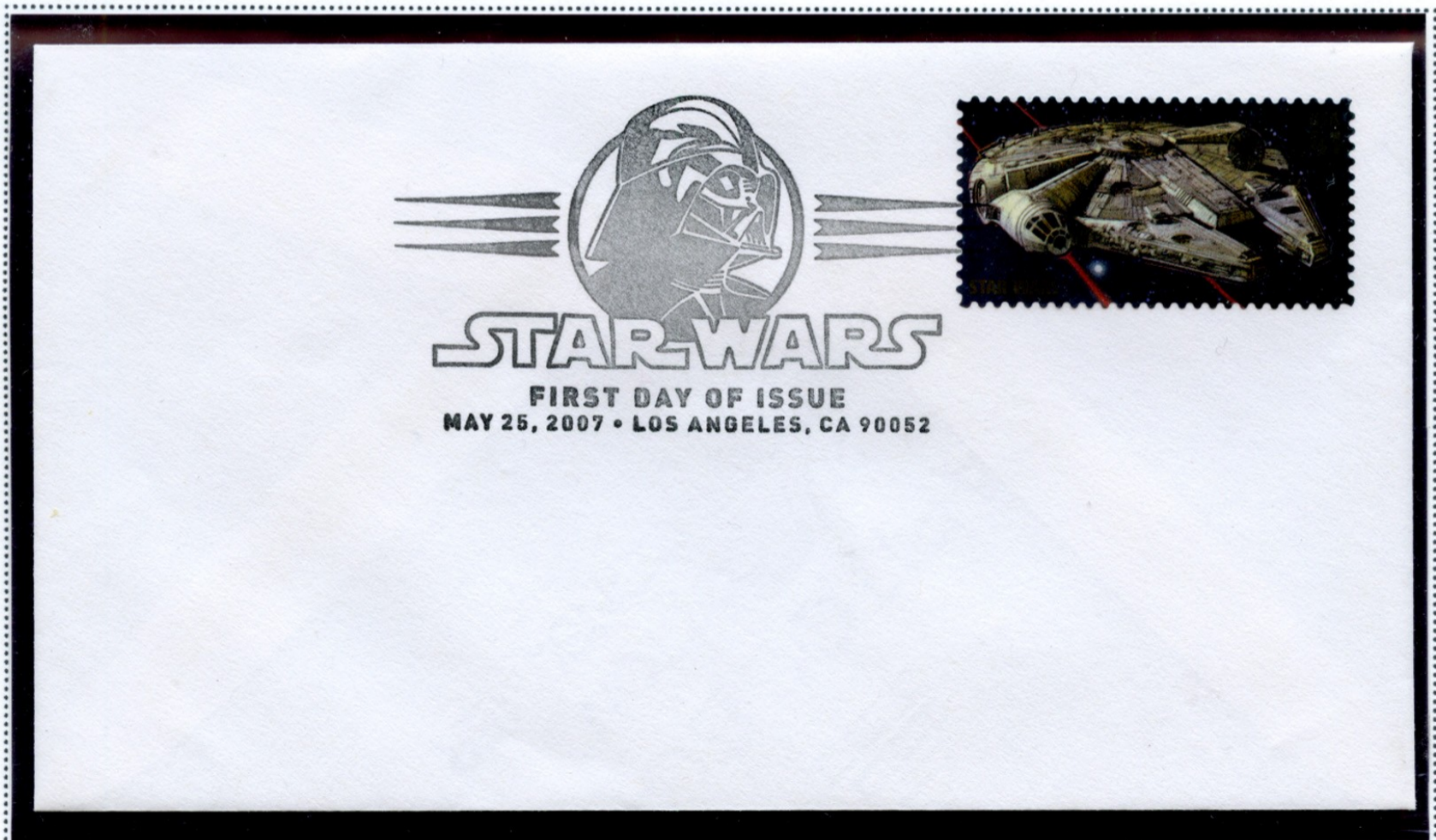


UNITED STATES SPACE STAMPS

STAR WARS



STAR WARS



UNITED STATES SPACE STAMPS

STAR WARS



STAR WARS



UNITED STATES SPACE STAMPS

STAR WARS



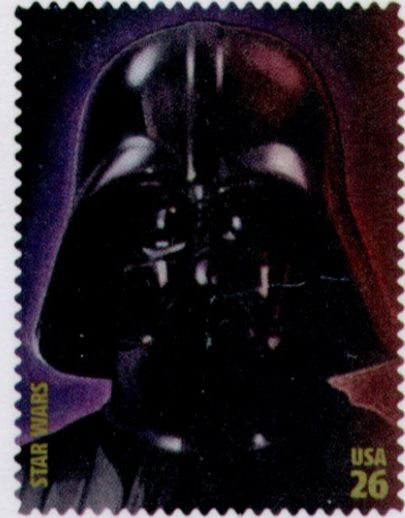
STAR WARS



UNITED STATES SPACE STAMPS

STAR WARS POSTCARDS

After Anakin Skywalker is seduced by the dark side, he becomes a terrifying union of man and machine, **Darth Vader**. Hidden behind dark robes and fearsome armor, he spreads terror as one of Emperor Palpatine's most trusted servants. While commanding the lead Star Destroyer in the massive Imperial Fleet, Vader is determined to hunt down and destroy the Rebel Alliance just as he wiped out the Jedi. But when he tries to lure his son, Rebel hero Luke Skywalker, to the dark side, the sight of Luke writhing in agony at the hands of the Emperor prompts him to sacrifice himself, destroying the Emperor and finally allowing Anakin to reemerge from the darkness.



**STAR
WARS**

© 2007 Lucasfilm Ltd. & TM. All rights reserved.
Used under authorization.
© 2007 USPS

Issued in a booklet of fifteen cards, each of these cards reproduces one of the Star Wars stamps from the May 25th miniature sheet, both as a stamp on the reverse side and a full-size illustration on the face.

UNITED STATES SPACE STAMPS

STAR WARS POSTCARDS

Once a noble warrior in the days of the Old Republic, **Obi-Wan Kenobi** retreats to the desert planet of Tatooine after the fall of the Jedi. There he watches over the young Luke Skywalker, who is destined to play a crucial role in the Rebellion. Obi-Wan begins Luke's training in the ways of the Force, initiating a journey that takes them both to the Empire's dreaded Death Star. When Obi-Wan faces his old apprentice Darth Vader, he sacrifices himself to ensure Luke's escape—and the eventual return of the Jedi.



**STAR
WARS**

© 2007 Lucasfilm Ltd. & TM. All rights reserved.
Used under authorization.

© 2007 USPS

Cloned from an infamous bounty hunter and raised as his son, **Boba Fett** witnesses his father's death at the hands of Jedi Master Mace Windu. Inheriting his father's deadly skills, he becomes the most notorious bounty hunter in the galaxy—and the perfect choice to track down the *Millennium Falcon*. Fett manages to capture his quarry, but the resulting rescue of Han Solo, and the explosive battle that follows, prove that he severely underestimates the determination of Solo's friends.



**STAR
WARS**

© 2007 Lucasfilm Ltd. & TM. All rights reserved.
Used under authorization.

© 2007 USPS

UNITED STATES SPACE STAMPS

STAR WARS POSTCARDS

When the Republic falls, the greatest fear of **Obi-Wan Kenobi** is realized: his former apprentice **Anakin Skywalker** has turned to the dark side and been named **Darth Vader**, Dark Lord of the Sith. Obi-Wan confronts his old friend on the volcanic lava planet of Mustafar, where their fierce lightsaber duel leaves a severely wounded Anakin dying on the charred gravel of a hellish world—and forever changes the destiny of the galaxy.



**STAR
WARS**

© 2007 Lucasfilm Ltd. & TM. All rights reserved.
Used under authorization.

© 2007 USPS

After manipulating the corrupt bureaucracy of the Republic into his personal Empire, **Emperor Palpatine** instills fear across the galaxy. Twisted by greed, ambition, and power, the tyrannical Sith Lord joins his apprentice, **Darth Vader**, in attempting to turn **Luke Skywalker** to the dark side of the Force, a move that ultimately leads to the Emperor's destruction—and the triumph of good over evil.



**STAR
WARS**

© 2007 Lucasfilm Ltd. & TM. All rights reserved.
Used under authorization.

© 2007 USPS

UNITED STATES SPACE STAMPS

STAR WARS POSTCARDS

Although diminutive and unassuming, **Yoda** is a respected member of the Jedi Council and has no equal in his keen insight into the Force. A wise teacher of young Jedi for 800 years—and remarkably agile with a lightsaber—Yoda goes into hiding on the swamp planet of Dagobah after the fall of the Republic. By ensuring his own survival, he helps his last apprentice, Luke Skywalker, to fulfill his destiny, thus honoring the Jedi legacy and finally restoring peace to the galaxy.



**STAR
WARS**

© 2007 Lucasfilm Ltd. & TM. All rights reserved.
Used under authorization.

© 2007 USPS

With a fearsome appearance that testifies to the evil raging within, the Sith Lord **Darth Maul** wields his double-bladed lightsaber with deadly grace. When this terrifying apprentice of Darth Sidious battles two formidable Jedi Knights, he proves to be Qui-Gon Jinn's most dangerous adversary, but the young Obi-Wan Kenobi permanently ends Maul's vicious rage.



**STAR
WARS**

© 2007 Lucasfilm Ltd. & TM. All rights reserved.
Used under authorization.

© 2007 USPS

UNITED STATES SPACE STAMPS

STAR WARS POSTCARDS

Quick-thinking and skilled with a blaster, **Han Solo** is a smuggler, space pirate, and captain of the *Millennium Falcon*. When he and his Wookiee first mate, **Chewbacca**, are hired to transport Luke Skywalker and Obi-Wan Kenobi, Han becomes involved in the rescue of Princess Leia. Enamored with Leia and drawn to her cause, Han finds a focus for his flyboy talents. No longer a reckless adventurer, he becomes one of the Rebellion's most courageous heroes.



**STAR
WARS**

© 2007 Lucasfilm Ltd. & TM. All rights reserved.
Used under authorization.

© 2007 USPS

An accomplished senator and daughter of the royal family of Alderaan, **Princess Leia Organa** becomes the strong-willed heroine of the Rebel Alliance, serving as a symbol of diplomacy, strength, and hope. Shortly before her capture by the Empire, Princess Leia manages to smuggle a plea for help to Jedi Knight Obi-Wan Kenobi through the astromech droid **R2-D2**. The resourceful Artoo leads his new owner, Luke Skywalker, straight to Obi-Wan, ensuring Luke's destiny as a hero of the Rebellion.



**STAR
WARS**

© 2007 Lucasfilm Ltd. & TM. All rights reserved.
Used under authorization.

© 2007 USPS

UNITED STATES SPACE STAMPS

STAR WARS POSTCARDS

The **X-wing starfighter** is equipped with laser cannons, proton torpedoes, deflector shields, a hyperdrive engine, and an astromech droid. Versatile and durable, the X-wing plays a key role in the war against the Empire, most notably during the Battle of Yavin, when Luke Skywalker destroys the original Death Star and achieves the first major victory for the Rebel Alliance.



**STAR
WARS**

© 2007 Lucasfilm Ltd & TM. All rights reserved.
Used under authorization.

© 2007 USPS

Abandoning individuality for conformity, **stormtroopers** represent the most visible extension of Imperial might. Deployed in overwhelming numbers, they put down insurrections and maintain oppressive order on the far-flung worlds of the Empire. Varying planetary conditions often call for specially trained and equipped units, such as the snowtroopers who besiege the ice world of Hoth and the lightly armored scout troopers who patrol the forests of Endor.



**STAR
WARS**

© 2007 Lucasfilm Ltd & TM. All rights reserved.
Used under authorization.

© 2007 USPS

UNITED STATES SPACE STAMPS

STAR WARS POSTCARDS

Elected ruler of Naboo at only 14, **Queen Padmé Amidala** later serves as a Senator; her outspoken nature is a beacon of reason in an increasingly fragmented Senate. Hiding her love for and marriage to Jedi Knight Anakin Skywalker, she fears for her husband during the Clone Wars and is haunted by the impending demise of the crumbling Republic, not yet aware that she carries a new hope for the future within her: twin children, Luke and Leia.



**STAR
WARS**

© 2007 Lucasfilm Ltd. & TM. All rights reserved.
Used under authorization.

© 2007 USPS

Despite its battered appearance, the **Millennium Falcon** is famous for slick maneuvers and dangerously close escapes. Won by Han Solo in a game of sabacc from gambler Lando Calrissian, the customized Corellian freighter has been upgraded with military-level weaponry and is equipped with an unpredictable hyperdrive system that, when functional, comes in handy for smuggling—or for avoiding any Imperial entanglements.



**STAR
WARS**

© 2007 Lucasfilm Ltd. & TM. All rights reserved.
Used under authorization.

© 2007 USPS

UNITED STATES SPACE STAMPS

STAR WARS POSTCARDS

Fluent in over six million forms of communication, protocol droid **C-3PO** is an essential companion to Luke Skywalker and an asset to the Rebel Alliance. Rarely seen without his counterpart, R2-D2, the fretful and anxious Threepio has no delusions of grandeur, but he frequently finds himself in the midst of the action. He is vital to rescue missions, first on the Death Star and later in the court of Jabba the Hutt, and his dramatic retelling of the Galactic Civil War persuades the Ewoks to fight in the final, decisive battle against the Empire.



**STAR
WARS**

© 2007 Lucasfilm Ltd. & TM. All rights reserved.
Used under authorization.

© 2007 USPS

As a simple moisture farmer on the desert planet Tatooine, **Luke Skywalker** dreams of adventures among the stars. When a distress call from Princess Leia leads him to Obi-Wan Kenobi, he takes his first steps into a much larger world, joining the epic struggle between the Rebel Alliance and the Galactic Empire. As he learns the ways of the Force, Luke becomes a new hope for an embattled galaxy, but first he must face the evil Emperor—and his own darkest fears.



**STAR
WARS**

© 2007 Lucasfilm Ltd. & TM. All rights reserved.
Used under authorization.

© 2007 USPS

UNITED STATES SPACE STAMPS

STAR WARS POSTCARDS

Item No. 886500 Price: \$12.95 AIC 092
Package Not Suitable for Philatelic Archiving

**UNITED STATES
POSTAL SERVICE**

© 2007 Lucasfilm Ltd. & TM
All rights reserved. Used under authorization.

© 2007 USPS

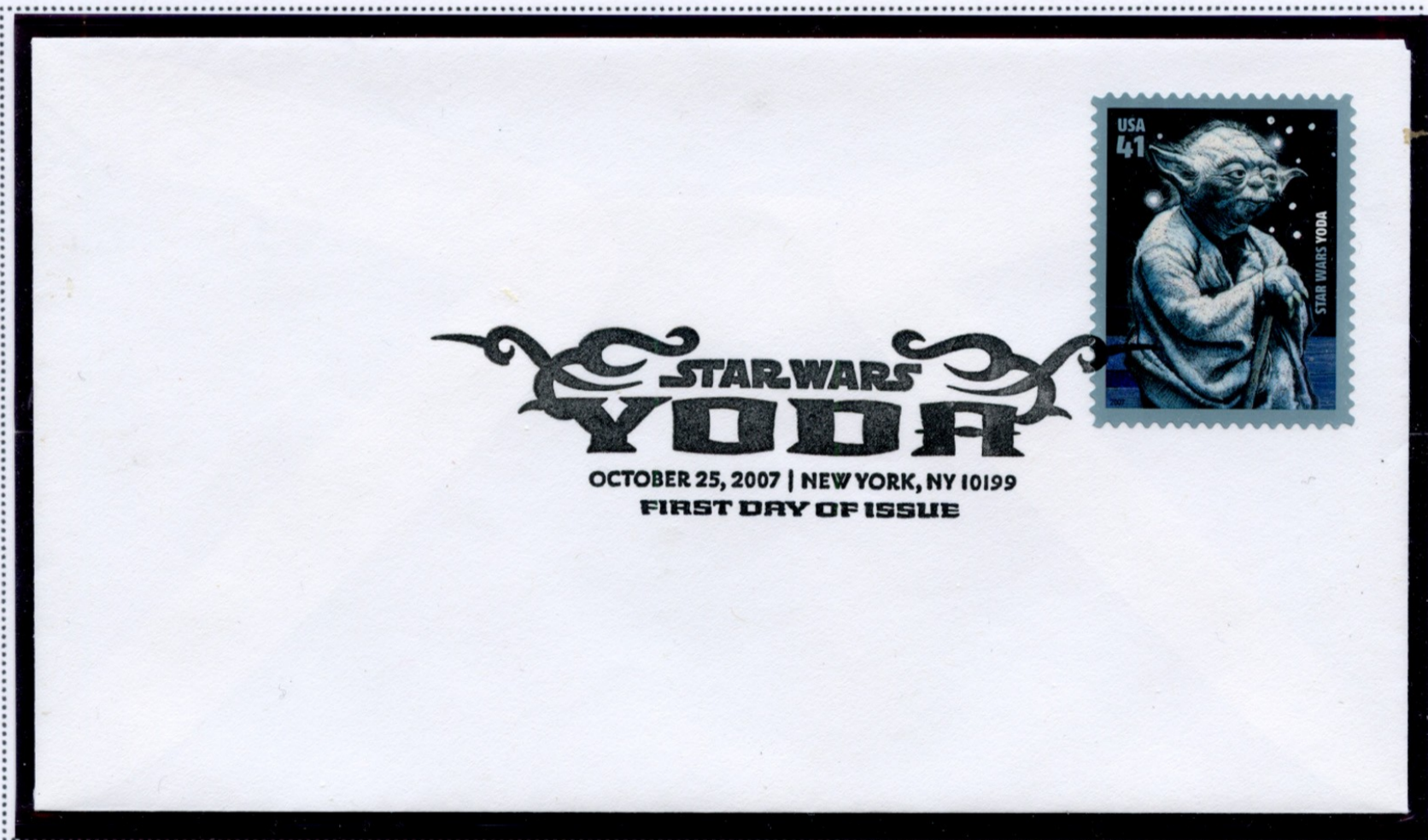
For 30 years, the *Star Wars* saga has thrilled moviegoers with its epic story of good versus evil. Set across a fantastic galaxy of exotic planets and bizarre creatures, the saga tells the mythic tale of the disintegration of the Old Republic, the creation of the Empire, the rise of the evil Darth Vader, and the ultimate victory of the Rebel Alliance. From the wisdom and power of the Jedi Masters to the brave deeds of improbable heroes, *Star Wars* has inspired generations of fans with its unbridled sense of adventure, advancing the art of filmmaking while leaving an indelible mark on our cultural imagination.

The cover of the booklet illustrates each of the cards contained therein.

UNITED STATES SPACE STAMPS

OCTOBER 25, 2007

STAR WARS - YODA

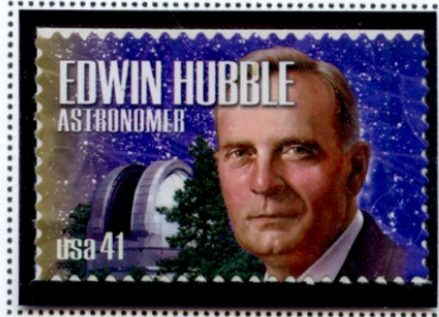


In addition to the sheet of 15 stamps issued depicting characters from the "Star Wars" series of films, another miniature sheet was issued just having the "Yoda" stamp which is included in the larger sheet.

UNITED STATES SPACE STAMPS

MARCH 6, 2008

EDWIN POWELL HUBBLE, AMERICAN SCIENTIST



first day of issue
american
scientists.
March 6, 2008 | New York, NY 10199

Edwin Hubble, astronomer, had laid much of the groundwork for advances in his field by the late 1920's. His measurements of variable stars proved that nebulas were distant galaxies outside the Milky Way. The phenomenon of red shift, whereby light from an object may show spectrum shifts in color according to its motion away or toward us intrigued him and led to the discovery of the expansion of the universe.

The Hubble Space Telescope was named in his honor. Those astronomical photographs used on these stamps are among its products. The sheet was issued on tenth anniversary of the telescope's launch into orbit.

UNITED STATES SPACE STAMPS

MAY 4, 2011

MERCURY PROJECT AND MESSENGER MISSION



Mercury Project First Day Cover



The Mercury Project was the first United States effort to launch a manned spacecraft. The stamp shows Alan Shepard, America's first man in space, with the Mercury capsule and launch vehicle to either side. The flight was sub-orbital, but led the way to a series of orbital missions.

The Messenger Mission was the first spacecraft to orbit and examine the planet Mercury, the innermost planet of the Solar System. It began United States exploration of the inner planets long after earlier efforts to reach the huge outer planets of the system.

UNITED STATES SPACE STAMPS

MAY 4, 2011

MERCURY PROJECT AND MESSENGER MISSION

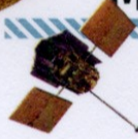
Messenger Mission First Day Cover



FIRST DAY OF ISSUE



**MERCURY PROJECT AND
MESSENGER MISSION**

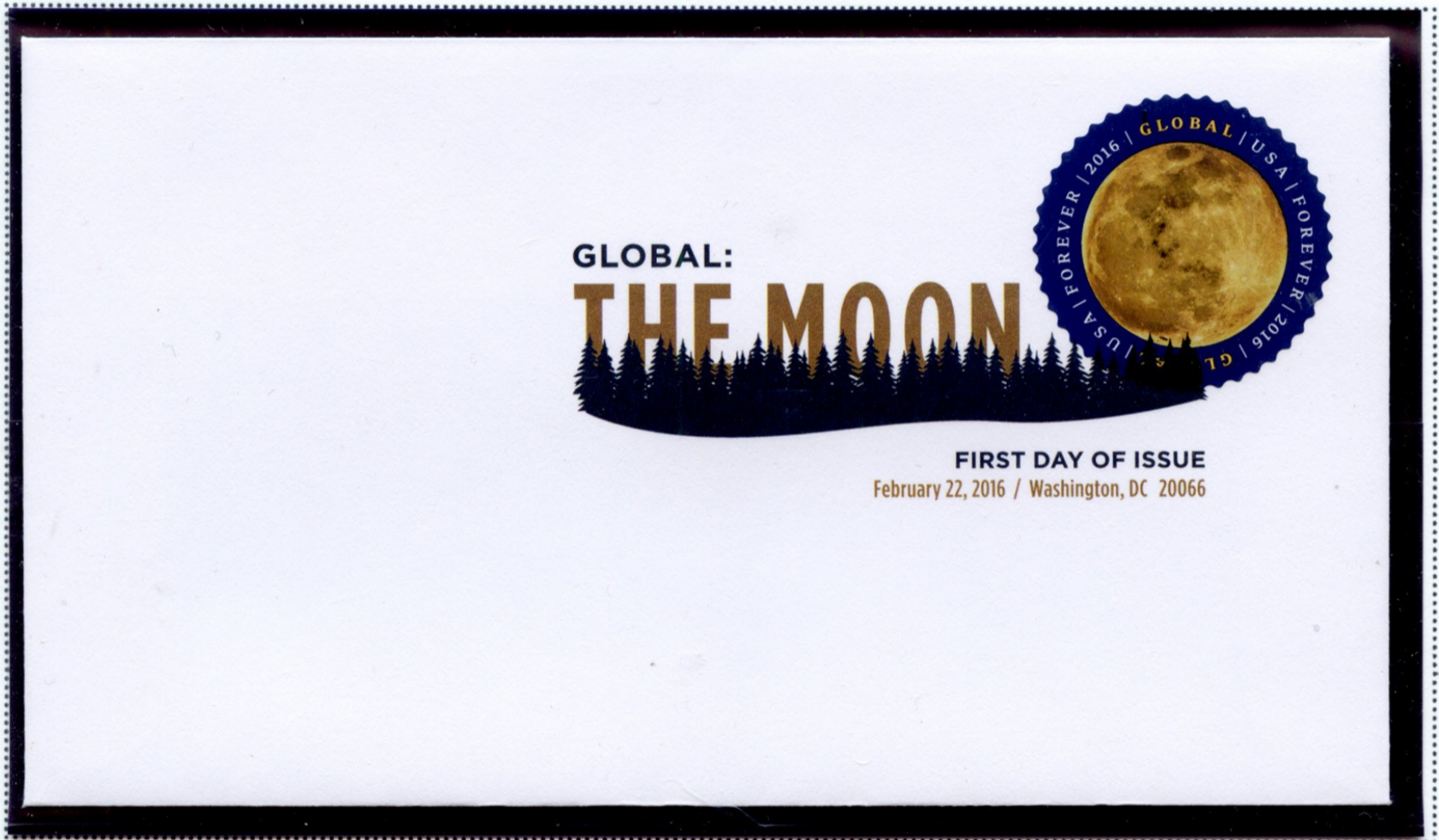


■ MAY 4, 2011
KENNEDY SPACE CENTER, FL 32815

UNITED STATES SPACE STAMPS

FEBRUARY 22, 2016

THE MOON



The Moon seems like the perfect subject for this circular stamp, which at \$1.15 pays the one ounce rate to international destinations or two ounces to Canada. It is the first of a series of stamps issued in 2016 with space themes which will illustrate all of the members of our solar system.

UNITED STATES SPACE STAMPS

MAY 31, 2016

VIEWS OF THE PLANETS



This issue, issued the same day as the Pluto souvenir sheet, illustrates how much technology has improved the images obtainable of celestial objects since the issue of the Space Exploration booklet of 1991. Radar, infrared photography, false color mapping and the use of collages bring out details of the planets which are barely visible, if at all, in the 1991 booklet.

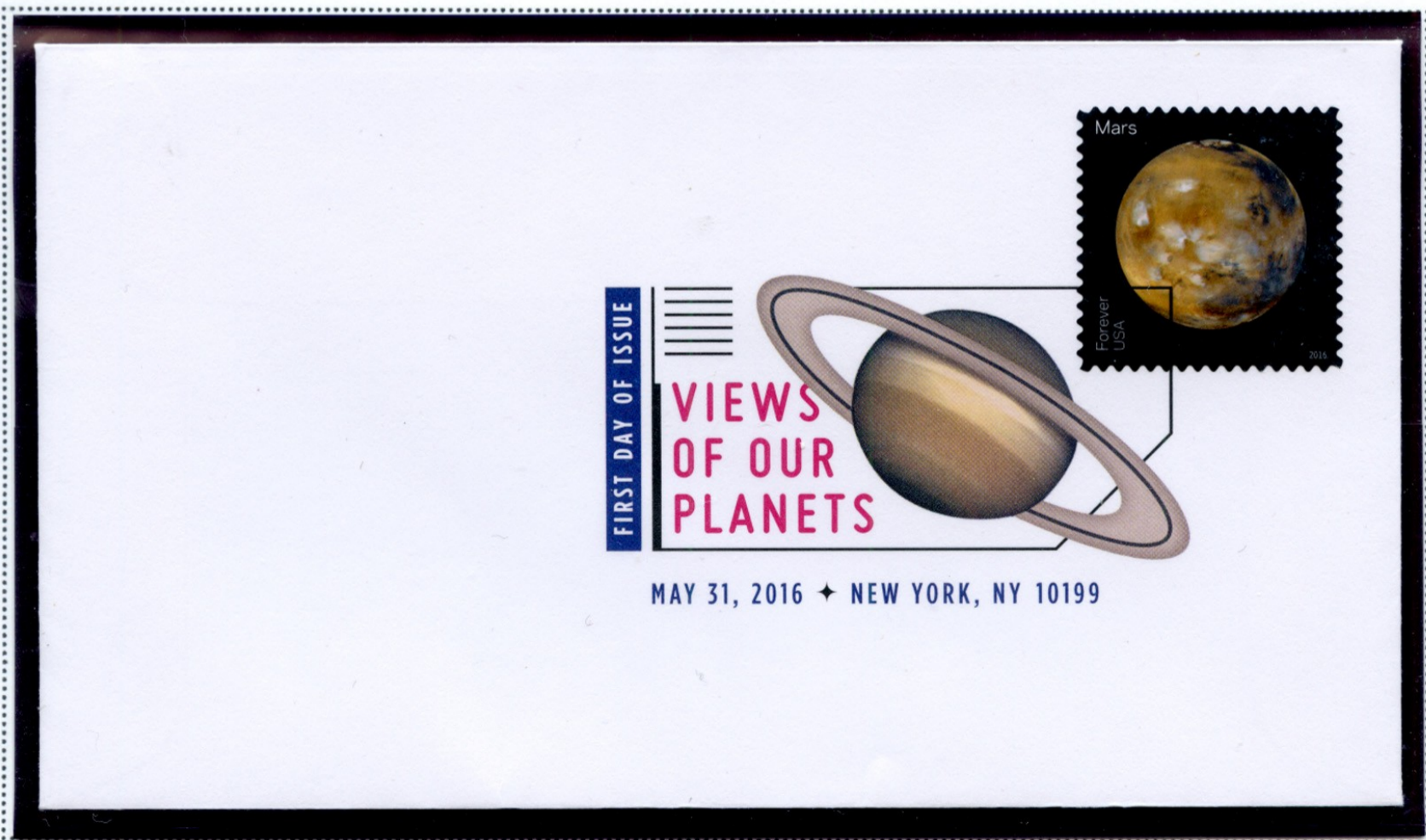
UNITED STATES SPACE STAMPS

MERCURY AND VENUS



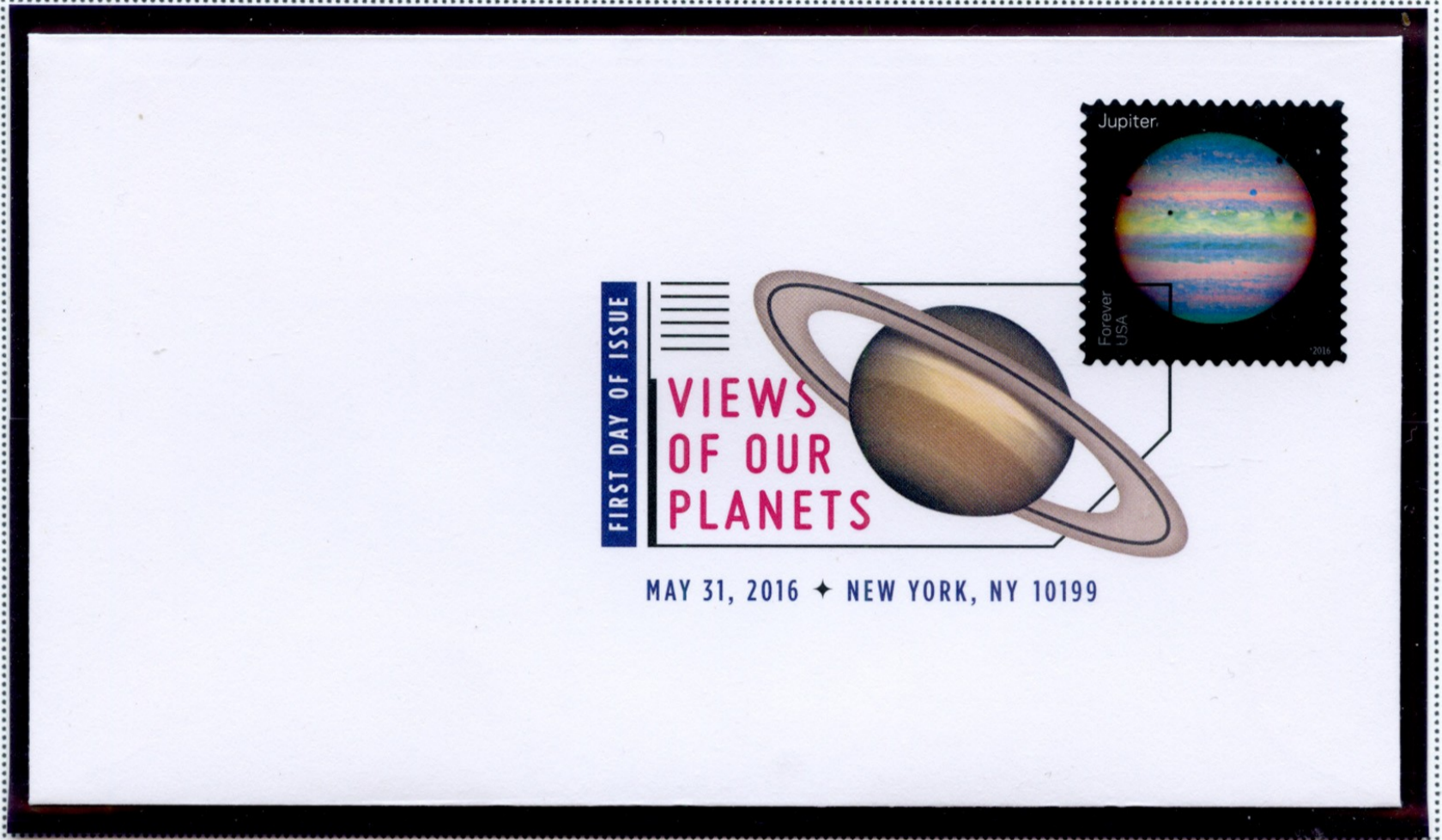
UNITED STATES SPACE STAMPS

EARTH AND MARS



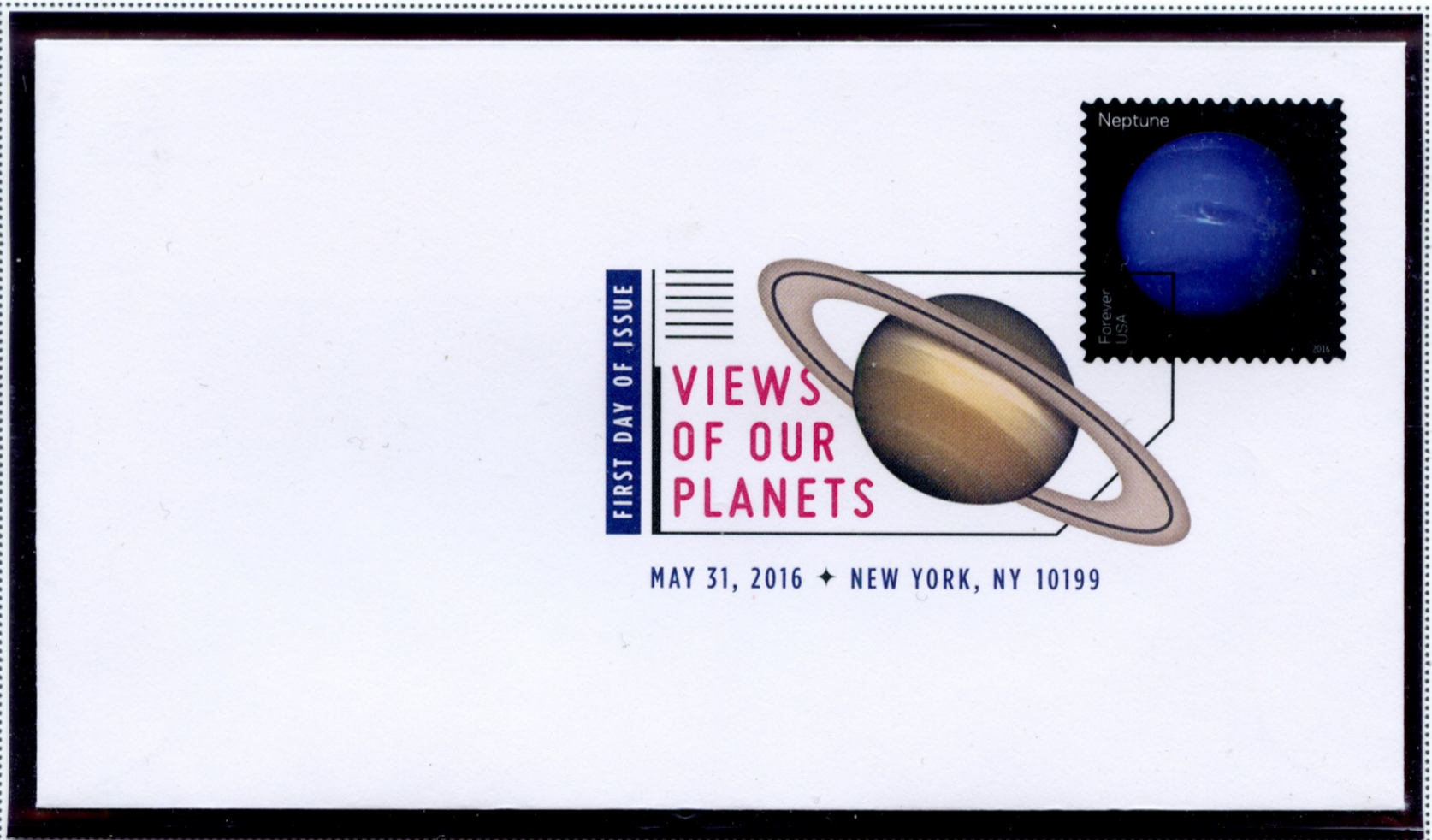
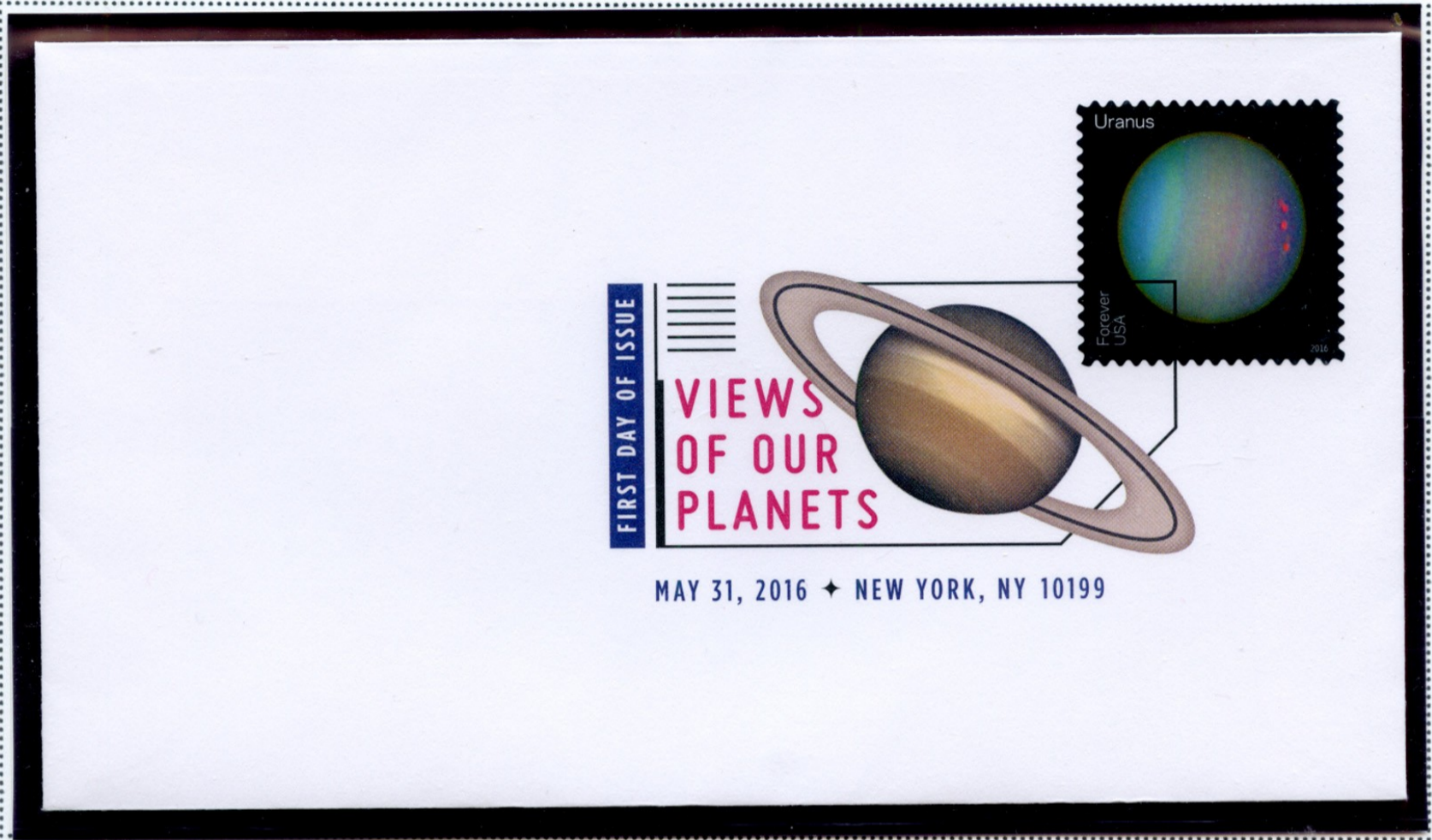
UNITED STATES SPACE STAMPS

JUPITER AND SATURN



UNITED STATES SPACE STAMPS

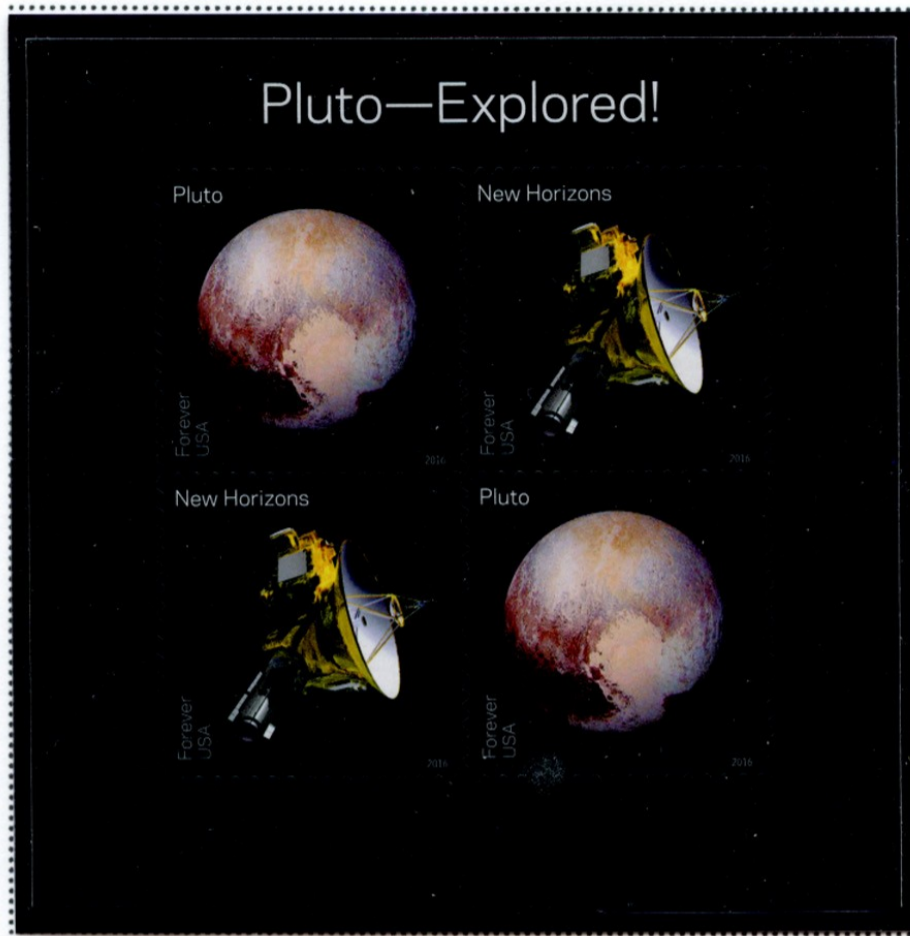
URANUS AND NEPTUNE



UNITED STATES SPACE STAMPS

MAY 31, 2016

PLUTO EXPLORED



The Pluto sheetlet is really a follow-up to the 1991 issue, which lists Pluto as "not yet explored", along with the New Horizons spacecraft which surveyed the dwarf planet.

UNITED STATES SPACE STAMPS

PLUTO AND THE "NEW HORIZONS" SPACECRAFT



UNITED STATES SPACE STAMPS

SEPTEMBER 2, 2016

STAR TREK FIFTIETH ANNIVERSARY



On September 8, 1966, "Star Trek" premiered. Centered on the interstellar voyages of the U.S.S. Enterprise, the prime-time television program's mission was to boldly go where no man had gone before. With an intricate futuristic setting, and a multicultural cast and story lines that touched on social issues, "Star Trek" pushed past the boundaries of popular science fiction and became a worldwide phenomenon.

Each of the four stamps showcases one of the elements of the TV show: the *Starship Enterprise* image inside the outline of a Starfleet insignia, the silhouette of a crewman inside a transporter, the silhouette of the *Enterprise* seen from above and the *Enterprise* against the background of the Vulcan salute, Spock's hand gesture. The Starfleet insignia also appears between "Forever" and "USA" on each stamp.

UNITED STATES SPACE STAMPS

STAR TREK FIFTIETH ANNIVERSARY



UNITED STATES SPACE STAMPS

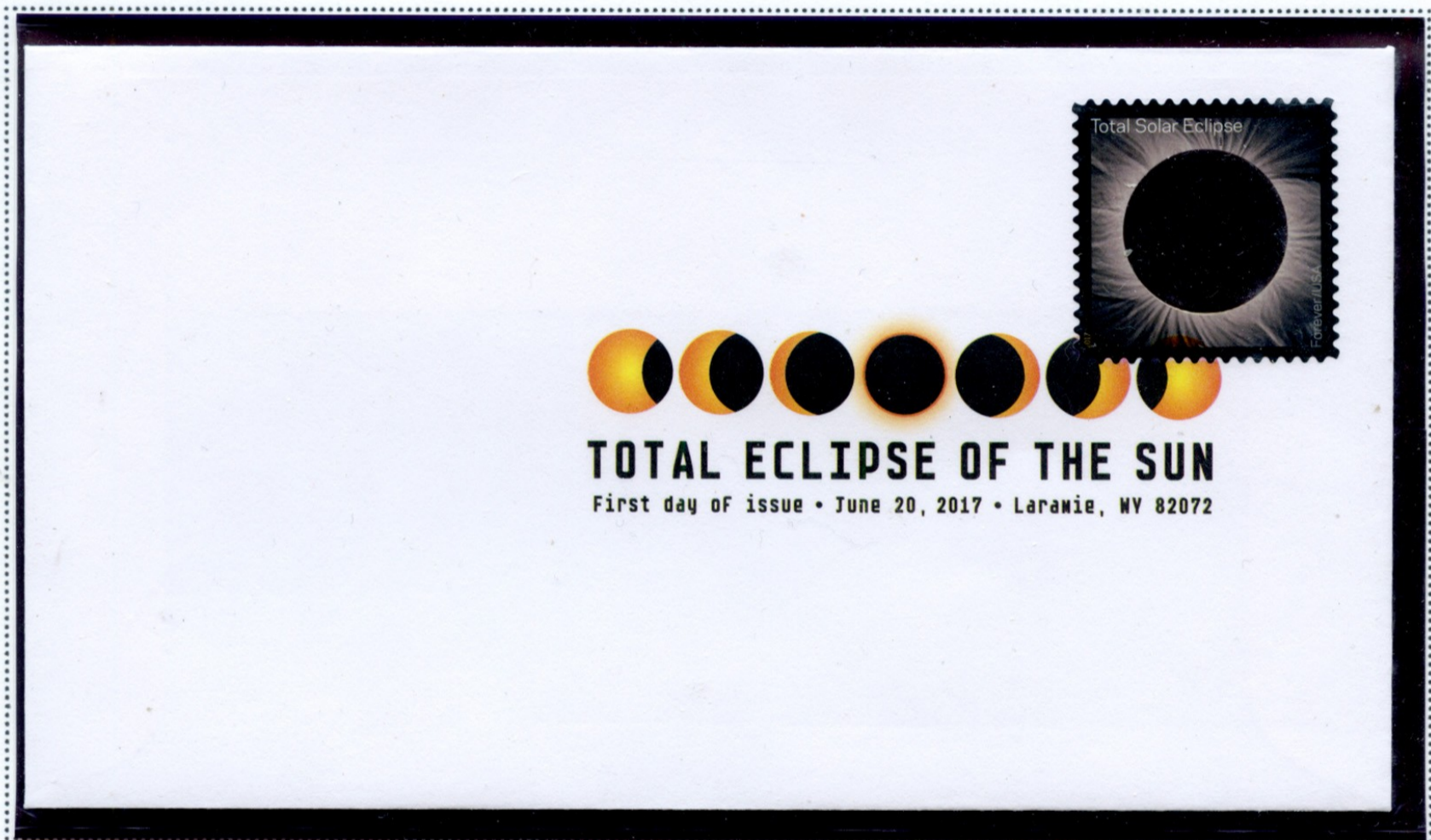
STAR TREK FIFTIETH ANNIVERSARY



UNITED STATES SPACE STAMPS

JUNE 20, 2017

TOTAL ECLIPSE OF THE SUN

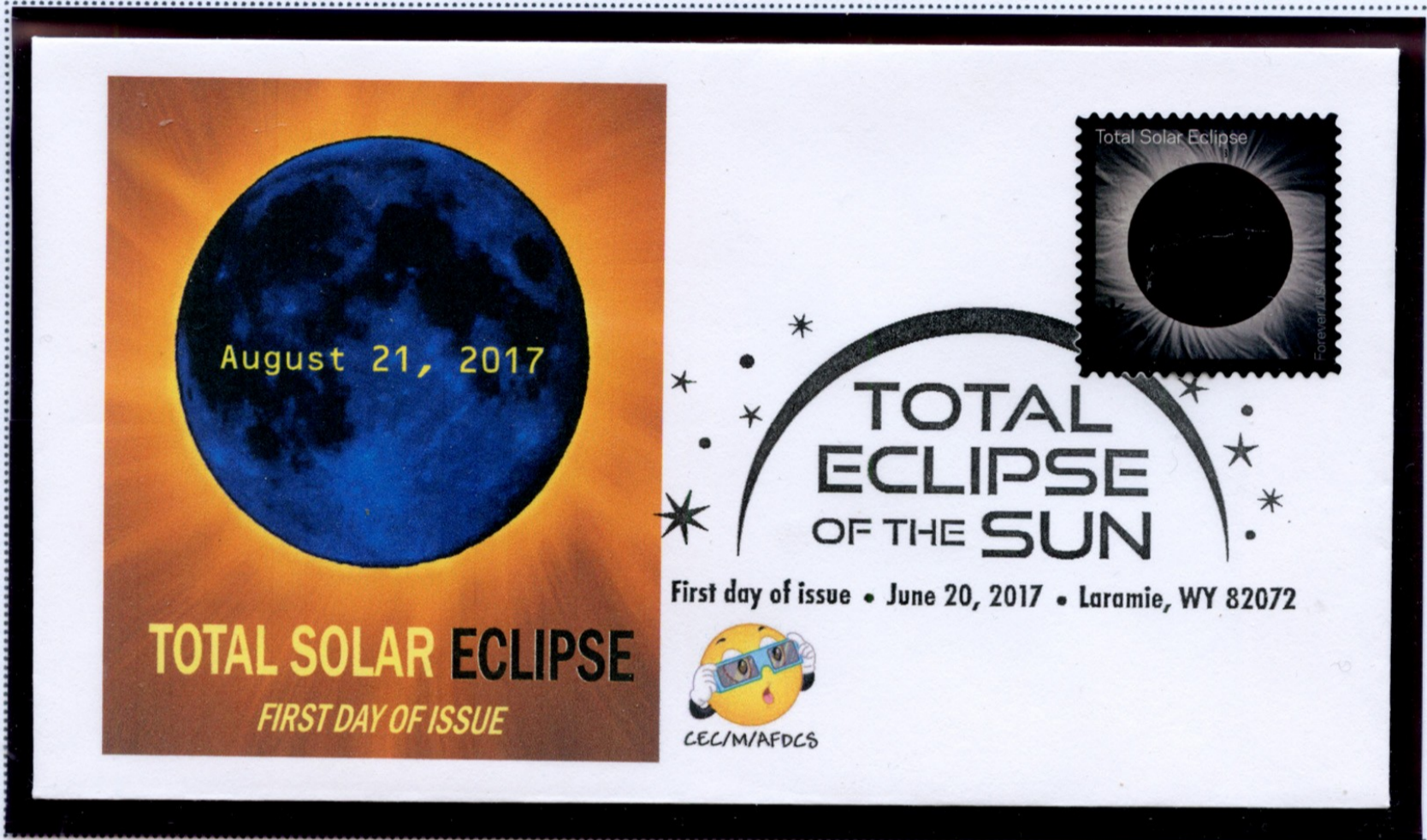


On August 21, 2017, a total solar eclipse of the sun occurred along a 70 mile wide path beginning roughly at Salem, Oregon and extending southeast across the country through Charleston, South Carolina for a period of ninety minutes. This stamp celebrates the event and introduced a technique new to United States stamps. The area of the stamp representing the Moon is printed in thermographic ink and appears black in cooler temperatures, representing the period of total eclipse. If that same area is warmed, such as by holding the stamp between two fingers or simply bringing it into a warm area, the black image fades and a normal picture of the moon's face is seen with its seas and craters.

UNITED STATES SPACE STAMPS

JUNE 20, 2017

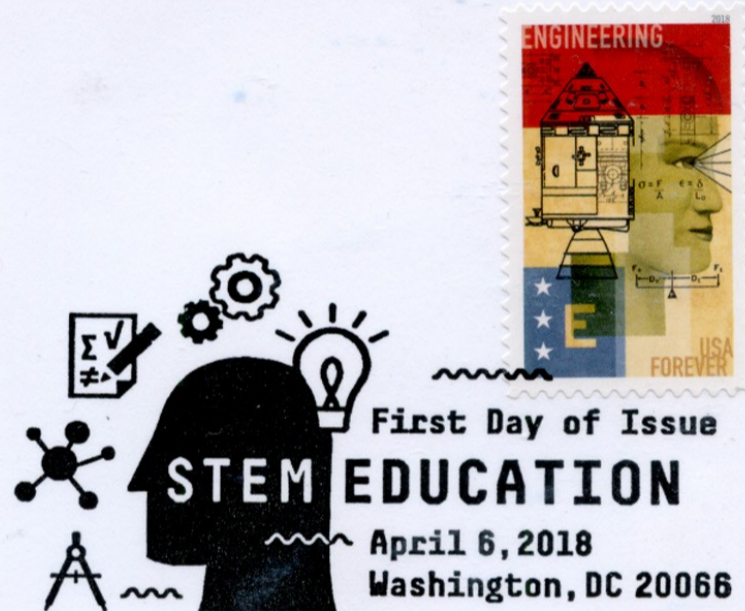
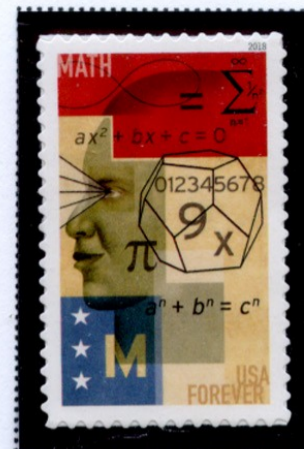
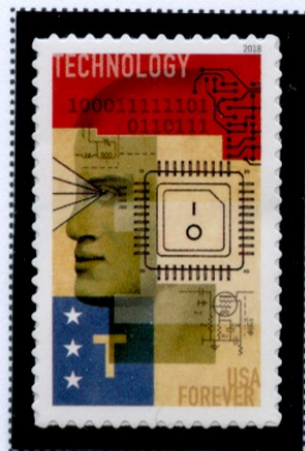
TOTAL ECLIPSE OF THE SUN



UNITED STATES SPACE STAMPS

APRIL 6, 2018

STEM EDUCATION



Stem education is a program begun in 2006 as a result of surveys indicating that students in the United States ranked poorly against many of those in foreign schools in the areas of science, technology, engineering and mathematics. Curricula were revised to concentrate on these areas then, and more so in 2015, and materials and teaching methods improved dramatically. The acronym "STEM" derives from the first letters of science, technology, engineering and mathematics. The four stamps above each emphasize one of these, and the one for engineering includes a drawing of an Apollo spacecraft in its design.

UNITED STATES SPACE STAMPS

MAY 23, 2018

SALLY RIDE, FIRST AMERICAN WOMAN IN SPACE



Sally Kristen Ride (1951-2012) was the first American woman astronaut. Trained as a physicist, she rode the shuttle *Challenger* on mission STS-7 in 1984. She made a second trip into space in 1984, again on *Challenger*. Three years later she left NASA.

UNITED STATES SPACE STAMPS

MAY 23, 2018

SALLY RIDE, FIRST AMERICAN WOMAN IN SPACE



+ America's first
+ woman in space +
Sally Ride
+ FIRST DAY OF ISSUE +
+ MAY 23, 2018 +
+ LA JOLLA, CA 92037 +

UNITED STATES SPACE STAMPS

JULY 19, 2019

FIRST MANNED MOON LANDING FIFTIETH ANNIVERSARY



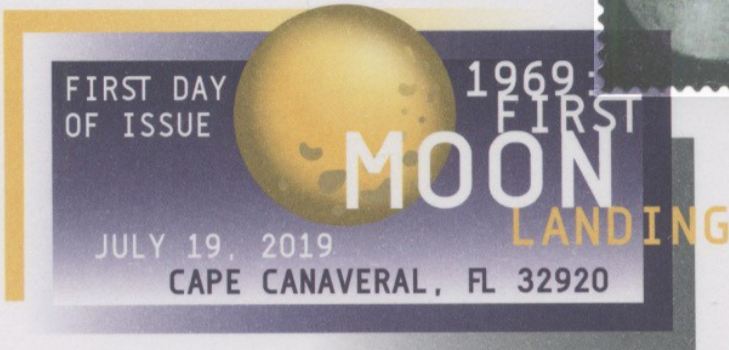
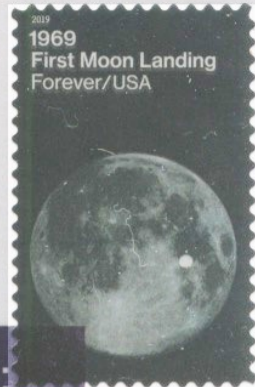
These stamps commemorate the fiftieth anniversary of the first landing on the moon by a manned spacecraft. The *Apollo 11* mission carried Neil Armstrong, Buzz Aldrin and Michael Collins to orbit around the Moon, from which Armstrong and Aldrin descended in the lunar lander *Eagle* to the surface. They made a limited exploration of the area and brought back samples to Earth on their return on July 24th. One stamp depicts a map of the Moon with their landing site marked, and the other is a photograph of Aldrin taken by Armstrong, who is reflected on Aldrin's helmet. This is the first stamp on which a living human has been pictured and his identification acknowledged by the Postal Service.



UNITED STATES SPACE STAMPS

JULY 19, 2019

FIRST MANNED MOON LANDING FIFTIETH ANNIVERSARY



UNITED STATES SPACE STAMPS

JULY 19, 2019

FIRST MANNED MOON LANDING FIFTIETH ANNIVERSARY

DELPEX 2019



*"That's one small step for a man,
one giant leap for mankind"*

Neil Armstrong

THE 50TH ANNIVERSARY OF THE FIRST
MANNED LANDING ON THE MOON



FIRST DAY OF ISSUE
1969: FIRST MOON LANDING
JULY 19, 2019
CAPE CANAVERAL, FL 32920

DELPEX 2019



*"That's one small step for a man,
one giant leap for mankind"*

Neil Armstrong

THE 50TH ANNIVERSARY OF THE FIRST
MANNED LANDING ON THE MOON



FIRST DAY OF ISSUE
1969: FIRST MOON LANDING
JULY 19, 2019
CAPE CANAVERAL, FL 32920

First Day Cancel on DELPEX 2019 Cachet

The End

Part 2