

THE HORSE ON UNITED STATES POSTAGE



THE HORSE HAS BEEN MANKIND'S COMPANION SINCE PREHISTORIC TIMES. HE HAS PROVIDED TRANSPORTATION, COMPANIONSHIP, FOOD AND A SOURCE OF POWER SINCE HIS DOMESTICATION IN OUR EARLIEST RECORDS, THE LATTER SO MUCH SO THAT THE WORD "HORSEPOWER" HAS BECOME A STANDARD UNIT OF MEASUREMENT. THE ILLUSTRATIONS ON THESE ISSUES SHOW THE HORSE IN THE MANY ASPECTS OF HIS ASSOCIATION WITH HUMANS THROUGH THE YEARS.

THE HORSE ON UNITED STATES STAMPS



THE FIRST UNITED STATES POSTAGE STAMP TO SHOW A PICTURE OF A HORSE IS THIS ONE. IT IS THE 2¢ DENOMINATION OF THE DEFINITIVE STAMP SERIES OF 1869 AND DEPICTS A POST RIDER ON A HORSE. THE INTER-CITY MAILS WERE CARRIED BY RIDERS LIKE THIS ALONG REGULAR "POST ROADS", A TERM WHICH STILL LINGERS TODAY IN THE BOSTON POST ROAD, WHICH REMAINS THE NAME OF U.S. HIGHWAY ROUTE #1 FROM NEW YORK CITY TO BOSTON.

THIS SERIES, THE NATION'S FIRST DEPARTURE FROM PORTRAITS ON POSTAGE STAMPS IN FAVOR OF SCENIC VIEWS, WAS SUBJECT TO HARSH CRITICISM BY THE PUBLIC AS IT WAS CONSIDERED "UNDIGNIFIED", AND THE SERIES WAS REPLACED IN 1870 BY A NEW ONE WHICH RETURNED TO PORTRAITS OF FAMOUS AMERICANS OF THE PERIOD.

THE HORSE ON UNITED STATES STAMPS



THE CELEBRATION OF THE CENTENNIAL OF THE AMERICAN REVOLUTIONARY WAR BROUGHT ABOUT A SECOND TRY AT ILLUSTRATIONS OTHER THAN PORTRAITS ON POSTAGE. INSTEAD, A DESIGN OF A SHIELD CONTAINING A POST RIDER FROM REVOLUTIONARY DAYS AND A TRAIN DEPICTING OLDER AND CONTEMPORARY MAIL TRANSPORTATION METHODS WAS EMBOSSED AND PRINTED IN RED ON ENVELOPES. THE DATES 1776 AND 1876 INDICATE THE CENTENNIAL, AND THE ENVELOPES WERE FIRST ISSUED AT THE CENTENNIAL EXPOSITION IN PHILADELPHIA.

ANOTHER ENVELOPE IN THE SAME DESIGN WAS ALSO ISSUED IN 1876, BUT WITH THE INDICIA PRINTED IN GREEN RATHER THAN RED. THESE TWO ISSUES ARE ACTUALLY THE COUNTRY'S FIRST COMMEMORATIVE POSTAGE.

IN 1976, THE SAME DESIGN WAS USED IN GREEN WITH THE "1876" CHANGED TO "1976" FOR THE BICENTENNIAL.



THE COUNTRY'S FIRST COMMEMORATIVE STAMPS, ISSUED IN 1893, CELEBRATED THE 400TH ANNIVERSARY OF THE DISCOVERY OF AMERICA BY CHRISTOPHER COLUMBUS. THE SERIES OF SIXTEEN STAMPS HAD FACE VALUES RANGING FROM 1¢ TO \$5.00 AND EACH HAD A DIFFERENT SCENE REFLECTING HIS DISCOVERY. THE 6¢ VALUE SHOWS COLUMBUS RIDING A HORSE AS HE IS WELCOMED IN BARCELONA, AND THE 50¢ STAMP IS TITLED "THE RECALL OF COLUMBUS", AND HE AGAIN IS ON HORSEBACK.

IN 1992, THE ENTIRE SET WAS REPRODUCED FROM THE ORIGINAL DIES ON SIX SOUVENIR SHEETS TO CELEBRATE THE 100TH ANNIVERSARY OF THE FIRST UNITED STATES COMMEMORATIVE STAMPS. THREE OTHER COUNTRIES, SPAIN, PORTUGAL AND ITALY ALSO ISSUED SIMILAR SHEETS WITH THE SAME DESIGNS.

THE HORSE ON UNITED STATES STAMPS



THE NATION'S SECOND COMMEMORATIVE SERIES, ISSUED IN 1898, WAS THE TRANS-MISSISSIPPI EXPOSITION SET OF NINE STAMPS ISSUED IN OMAHA, NEBRASKA, WHICH CELEBRATED THE OPENING OF THE WEST TO SETTLEMENT. EACH OF THE STAMPS, WHICH HAD VALUES BETWEEN 1¢ AND \$2.00, FEATURES A WESTERN SCENE.

THE 2¢ STAMP IS TITLED "FARMERS IN THE FIELD" AND SHOWS FARM WORKERS WITH NUMEROUS HORSE-DRAWN IMPLEMENTS. AN INDIAN ON A HORSE HUNTING BUFFALO WITH A BOW AND ARROW IS FEATURED ON THE 4¢ STAMP. THE 8¢ VALUE SHOWS MOUNTED SOLDIERS GUARDING A WAGON TRAIN, AND THE 10¢ STAMP, "HARDSHIPS OF EMIGRATION", IS A SCENE OF SETTLERS GATHERED AROUND A COVERED WAGON WHERE ONE OF THE HORSES DRAWING IT HAS COLLAPSED IN THE REINS.

THE STAMPS WERE INTENDED TO BE PRINTED IN TWO COLORS, BUT THE START OF THE SPANISH-AMERICAN WAR CREATED BUDGET SHORTAGES AND THEY WERE ALL PRINTED IN ONE COLOR.

THE HORSE ON UNITED STATES STAMPS



IN 1913 THE POST OFFICE DEPARTMENT CREATED PARCEL POST TO MAKE PACKAGE DELIVERY INEXPENSIVE FOR ALL, ESPECIALLY IN RURAL AREAS . A SET OF TWELVE STAMPS JUST FOR THIS WAS ISSUED, EACH SHOWING SOME ASPECT OF HANDLING MAIL. THIS ONE SHOWS A RURAL DELIVERY HORSE AND WAGON IN THE VIGNETTE. THE STAMPS WERE DISCONTINUED BY 1914 AND REGULAR POSTAGE USED INSTEAD.



THE CENTENNIAL OF THE OPENING OF THE OREGON TERRITORY IN 1836 WAS COMMEMORATED WITH THE ISSUE OF THIS STAMP. TO THE LEFT OF THE MAP IS A MOUNTED INDIAN WEARING A WAR BONNET, AND ON THE RIGHT IS A TRAIN OF COVERED WAGONS PULLED BY HORSES.



IN 1938, THE SESQUICENTENNIAL OF RATIFICATION OF THE CONSTITUTION WAS CELEBRATED WITH THE STAMP ABOVE. A MAN MOUNTING A HORSE IS IN THE LEFT FOREGROUND, AND ANOTHER IS GALLOPING AWAY ON THE RIGHT.

THE HORSE ON UNITED STATES STAMPS



IN 1913 THE POST OFFICE DEPARTMENT CREATED PARCEL POST TO MAKE PACKAGE DELIVERY INEXPENSIVE FOR ALL, ESPECIALLY IN RURAL AREAS. A SET OF TWELVE STAMPS JUST FOR THIS WAS ISSUED, EACH SHOWING SOME ASPECT OF HANDLING MAIL. THIS ONE SHOWS A RURAL DELIVERY HORSE AND WAGON IN THE VIGNETTE. THE STAMPS WERE DISCONTINUED BY 1914 AND REGULAR POSTAGE USED INSTEAD.



A PONY EXPRESS RIDER LEAVING THE STATION APPEARS ON A 1940 STAMP. AS FAMOUS AS IT WAS, FEW PEOPLE REALIZE THAT IT ONLY OPERATED FOR EIGHTEEN MONTHS. THE COMPLETION OF THE TRANSCONTINENTAL RAILROAD AND THE TELEGRAPH WERE THE MAIN CAUSE OF ITS EARLY DEMISE, THOUGH THEIR HIGH RATES CONTRIBUTED AS WELL.

A PAINTING OF CORONADO AND HIS CONQUISTADORS IS SHOWN ON A STAMP ISSUED FOR THE 400TH ANNIVERSARY OF HIS EXPEDITION. THE SPANISH EXPLORERS BROUGHT HORSES BACK TO THE NEW WORLD, WHERE THEY HAD BEEN LONG EXTINCT, AND ANIMALS WHICH ESCAPED OR WERE CAPTURED BY THE INDIANS LED TO THEIR SPREAD THROUGH THE CONTINENT.



MORMON PIONEERS AS THEY ENTER THE VALLEY OF GREAT SALT LAKE ARE THE THEME OF A 1947 STAMP FOR THE CENTENNIAL OF UTAH'S SETTLEMENT. AT LEAST ONE HORSE IS SHOWN ACCOMPANYING A COVERED WAGON AS THEY MAKE THE DISCOVERY OF THE VALLEY AND MAKE THE STATEMENT, "THIS IS THE PLACE".

THE HORSE ON UNITED STATES STAMPS



A PONY EXPRESS RIDER LEAVING THE STATION APPEARS ON A 1940 STAMP. AS FAMOUS AS IT WAS, FEW PEOPLE REALIZE THAT IT ONLY OPERATED FOR EIGHTEEN MONTHS. THE COMPLETION OF THE TRANSCONTINENTAL RAILROAD AND THE TELEGRAPH WERE THE MAIN CAUSE OF ITS EARLY DEMISE, THOUGH THEIR HIGH RATES CONTRIBUTED AS WELL..

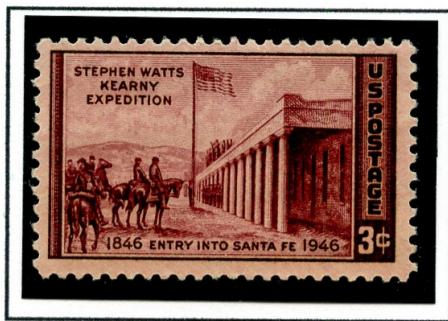


A PAINTING OF CORONADO AND HIS CONQUISTADORS IS SHOWN ON A STAMP ISSUED FOR THE 400TH ANNIVERSARY OF HIS EXPEDITION. THE SPANISH EXPLORERS BROUGHT HORSES BACK TO THE NEW WORLD, WHERE THEY HAD BEEN LONG EXTINCT, AND ANIMALS WHICH ESCAPED OR WERE CAPTURED BY THE INDIANS LED TO THEIR SPREAD THROUGH THE CONTINENT.



1947 WAS THE 100TH ANNIVERSARY OF THE FIRST UNITED STATES POSTAGE STAMPS, AND THIS ISSUE REPRODUCES THE IMAGES OF WASHINGTON AND FRANKLIN USED ON THOSE 5¢ AND 10¢ STAMPS. THE BALANCE OF THE DESIGN DEPICTS OLD AND NEW METHODS OF TRANSPORTING THE MAILS, AND A GALLOPING POST RIDER IS ONE OF THESE.

THE HORSE ON UNITED STATES STAMPS



FORT KEARNEY, NEBRASKA, KNOWN AT THE TIME AS THE "GUARDIAN OF THE PIONEER", IS DEPICTED ON A 1948 STAMP COMMEMORATING THE CENTENNIAL OF ITS ESTABLISHMENT. THE FORT WAS ONE OF THE PRIMARY DEPARTURE POINTS FOR WAGON TRAINS HEADED WEST, AND A GROUP LEAVING THE FORT IN THEIR WAGON IS SHOWN AT THE TOP OF THE STAMP.



THE ROUGH RIDERS, MADE FAMOUS BY TEDDY ROOSEVELT DURING THE SPANISH-AMERICAN WAR IN 1898, WERE HONORED ON A 1948 STAMP SHOWING CAPTAIN WILLIAM O'NEILL ON HIS HORSE, THE SUBJECT OF A STATUE SCULPTED BY SOLON BORGLUM, THE YOUNGER BROTHER OF GUTZON BORGLUM OF MT. RUSHMORE MEMORIAL FAME.



FORT BLISS, TEXAS, HAD ITS CENTENNIAL IN 1948. THE CENTRAL VIGNETTE SHOWS A GERMAN V-2 ROCKET BEING LAUNCHED. THE CAPTURED WORLD WAR 2 MISSILES WERE TESTED AT THE FORT. HOWEVER, THE TRIANGULAR BAND AROUND THE STAMPS DISPLAYS MANY TOKENS OF THE FORT'S EARLY HISTORY, INCLUDING A FAIR NUMBER OF HORSE-DRAWN VEHICLES AND RIDERS. ARMY TRUCKS AND TANKS ARE SHOWN AND EVEN A CAMEL, A REMINDER OF THE ARMY'S TRIALS OF CAMELS INSTEAD OF HORSES FOR USE IN THE TEXAS DESERT IN PRE-CIVIL WAR TIMES.

THE HORSE ON UNITED STATES STAMPS



MORMON PIONEERS AS THEY ENTER THE VALLEY OF GREAT SALT LAKE ARE THE THEME OF A 1947 STAMP FOR THE CENTENNIAL OF UTAH'S SETTLEMENT. AT LEAST ONE HORSE IS SHOWN ACCOMPANYING A COVERED WAGON AS THEY MAKE THE DISCOVERY OF THE VALLEY AND MAKE THE STATEMENT, "THIS IS THE PLACE".

FORT KEARNEY, NEBRASKA, WAS KNOWN AS THE "GUARDIAN OF THE PIONEER", AND IS DEPICTED ON A 1948 STAMP COMMEMORATING THE CENTENNIAL OF ITS ESTABLISHMENT. THE FORT WAS ONE OF THE PRIMARY DEPARTURE POINTS FOR WAGON TRAINS HEADED WEST, AND A GROUP LEAVING THE FORT IN THEIR WAGON IS SHOWN AT THE TOP OF THE STAMP.



THE ROUGH RIDERS, MADE FAMOUS BY TEDDY ROOSEVELT DURING THE SPANISH-AMERICAN WAR IN 1898, WERE HONORED ON A 1948 STAMP SHOWING CAPTAIN WILLIAM O'NEILL ON HIS HORSE, THE SUBJECT OF A STATUE SCULPTED BY SOLON BORGLUM, THE YOUNGER BROTHER OF GUTZON BORGLUM OF MT. RUSHMORE MEMORIAL FAME.



FORT BLISS, TEXAS, HAD ITS CENTENNIAL IN 1948. THE CENTRAL VIGNETTE SHOWS A GERMAN V-2 ROCKET BEING LAUNCHED. THE CAPTURED WORLD WAR 2 MISSILES WERE TESTED AT THE FORT. HOWEVER, THE TRIANGULAR BAND AROUND THE STAMPS DISPLAYS MANY TOKENS OF THE FORT'S EARLY HISTORY, INCLUDING A FAIR NUMBER OF HORSE-DRAWN VEHICLES AND RIDERS. ARMY TRUCKS AND TANKS ARE SHOWN AND EVEN A CAMEL, A REMINDER OF THE ARMY'S TRIALS OF CAMELS INSTEAD OF HORSES FOR USE IN THE TEXAS DESERT IN PRE-CIVIL WAR TIMES.

THE HORSE ON UNITED STATES STAMPS



THE 75TH ANNIVERSARY OF COLORADO STATEHOOD IS COMMEMORATED ON THIS 1951 STAMP. THE STATE'S CAPITOL BUILDING IS IN THE CENTER, BUT A COWBOY ON A BUCKING BRONCO IS AT THE RIGHT SIDE.



GEORGE WASHINGTON'S EVACUATION OF BROOKLYN, NEW YORK, IN 1776 AFTER A LOSING BATTLE WITH BRITISH TROOPS IS THE SUBJECT OF THIS 1951 ISSUE. WASHINGTON IS SHOWN ON HORSEBACK OVERLOOKING THE EAST RIVER AS HIS FORCES MAKE THEIR ESCAPE.



THE 125TH ANNIVERSARY OF RAIL TRANSPORTATION IN AMERICA, AND THE BALTIMORE AND OHIO RAILROAD IN PARTICULAR, IS ILLUSTRATED ON THIS 1952 STAMP. THREE STAGES ARE SHOWN: THE HORSE-DRAWN RAIL CAR, THE ORIGINAL B & O STEAM LOCOMOTIVE AND A STREAMLINED DIESEL LOCOMOTIVE OF THE 1950S ERA.

THE HORSE ON UNITED STATES STAMPS



THE GADSDEN PURCHASE STAMP OF 1953 SHOWS A COVERED WAGON ACCOMPANIED BY AN ARMED GUARD ON HORSEBACK. THE GADSDEN PURCHASE CONSISTED OF LAND ALONG THE SOUTHERN BORDERS OF ARIZONA, NEW MEXICO AND CALIFORNIA FROM THE MEXICAN GOVERNMENT. THE PURCHASED LAND WAS INTENDED PRIMARILY FOR USE BY THE SOUTHERN PACIFIC RAILROAD TO ENABLE ITS TRACKS TO BYPASS HIGH MOUNTAINS ALONG THEIR ROUTE TO THE PACIFIC COAST WITHOUT LEAVING UNITED STATES TERRITORY.

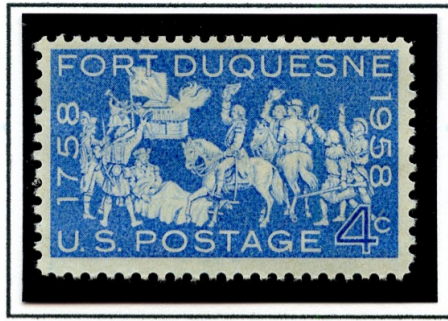


THE CENTENNIAL OF THE CREATION OF THE KANSAS TERRITORY IN 1954 HAS A THEME FAMILIAR ON MANY POSTAGE STAMPS SHOWING THIS PERIOD OF OUR COUNTRY'S HISTORY: A WAGON TRAIN OF SETTLERS WITH A GUARD MOUNTED ON A HORSE.



THE BUTTERFIELD OVERLAND MAIL CONSISTED OF A ROUTE CONTRACTED BY CONGRESS TO CARRY MAIL AND PASSENGERS BY STAGECOACH. THERE WERE TWO EASTERN TERMINALS, MEMPHIS, TENNESSEE AND ST. LOUIS, MISSOURI, AND THE ROUTES FROM THEM MET AT FORT SMITH, ARKANSAS AND RAN THROUGH INDIAN TERRITORY, TEXAS, NEW MEXICO, BAJA CALIFORNIA AND CALIFORNIA, ENDING IN SAN FRANCISCO. IT OPERATED FROM 1857 TO 1861 AND REPLACED THE ROUTE CROSSING THE GULF OF MEXICO BY SHIP, BY LAND ACROSS THE ISTHMUS OF PANAMA AND THEN BY AGAIN BY SHIP TO CALIFORNIA.

THE HORSE ON UNITED STATES STAMPS



FORT DUQUESNE, IOWA WAS A FRENCH FORT IN THE LOUISIANA TERRITORY UNTIL 1758, WHEN IT WAS CAPTURED BY BRITISH TROOPS UNDER GENERAL JOHN FORBES DURING THE FRENCH AND INDIAN WAR. COLONEL GEORGE WASHINGTON WAS PART OF FORBES' FORCES, AND HE IS SHOWN MOUNTED AMONG A SERIES OF SMALL VIGNETTES SHOWING EVENTS OF THE BATTLE, ONE OF WHICH SHOWS THE WOUNDED GENERAL FORBES ON A LITTER.



DISCOVERY OF THE COMSTOCK LODGE AT MT. DAVIDSON IN COLORADO IN 1859 BEGAN A GREAT RUSH BY MINERS HOPING TO CASH IN ON THE SILVER BURIED IN THE MOUNTAINS AS THEY HAD IN 1849 WITH GOLD IN CALIFORNIA. THE STAMP SHOWS HENRY COMSTOCK AND HIS HORSE TALKING WITH TWO MINERS AT THE DISCOVERY SITE AS THEY PAN SILVER FROM ORE IN A SLUICE.



THE CENTENNIAL OF THE PONY EXPRESS IS CELEBRATED ON THIS 1960 STAMP SHOWING A RIDER GALLOPING ALONG THE POST ROUTE WITH HIS MAIL SACK. OPERATED BY WELLS FARGO, THE ROUTE RAN FROM ST. JOSEPH, MISSOURI TO SACRAMENTO, CALIFORNIA. THE MAILED WERE CARRIED MOSTLY BY TEENAGE HORSEMEN, WHO RACED FROM ONE STATION TO ANOTHER, ONLY STOPPING TO CHANGE HORSES OR TURN THE MAIL OVER TO THE NEXT RIDER. THE PONY EXPRESS ONLY OPERATED FOR EIGHTEEN MONTHS FROM 1860 TO 1861. ONLY ONE SACK OF MAIL WAS EVER LOST TO INDIAN ATTACKS ON THE RIDERS.

THE HORSE ON UNITED STATES STAMPS



IN ADDITION TO THE POSTAGE STAMP, THE CENTENNIAL OF THE PONY EXPRESS IN 1960 WAS ALSO COMMEMORATED BY AN ENVELOPE BEARING A DESIGN SIMILAR TO THE STAMP.

THE HORSE ON UNITED STATES STAMPS



THE RANGE CONSERVATION STAMP OF 1961 WAS THE THIRD IN A SERIES HIGHLIGHTING ENVIRONMENTAL CONSERVATION. A RIDER ON A HORSE, CALLED THE TRAIL BOSS, IS WATCHING OVER A HERD OF CATTLE AFTER ROUNDUP AS THEY ARE BEING DRIVEN TO MARKET, MOST LIKELY IN OMAHA, NEBRASKA, THE CENTER OF THE MEAT PACKING INDUSTRY OF THE PERIOD.



THE SUBJECT OF A CHARLES M. RUSSELL PAINTING CALLED "JERKED DOWN" ILLUSTRATES TWO COWBOYS TRYING TO LASSO CATTLE. THE ONE AT THE LEFT HAS ROPED HIS PREY, BUT HIS HORSE HAS BEEN PULLED DOWN OFF ITS FEET BY THE STEER HE'S CAUGHT. RUSSELL WAS NOTED AS A PAINTER OF WESTERN SCENES, AND THE ISSUE COMMEMORATES HIS BIRTH IN 1864.



THE 150TH ANNIVERSARY OF ANDREW JACKSON'S VICTORY AT THE BATTLE OF NEW ORLEANS IN THE WAR OF 1812 IS CELEBRATED ON THIS 1965 STAMP SHOWING AN AMERICAN FLAG, A CAVALRYMAN AND AN ARTILLERYMAN WITH HIS CANNON. AN UNUSUAL THING ABOUT THIS BATTLE IS THAT IT WAS FOUGHT TWO WEEKS AFTER THE WAR WAS OFFICIALLY OVER. NEWS OF THE PEACE TREATY HAD TO COME BY SHIP FROM EUROPE AND WAS ONLY RECEIVED LONG AFTER THE BATTLE.

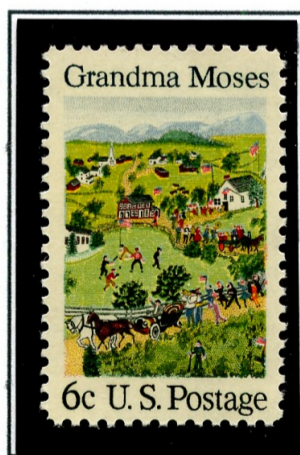
THE HORSE ON UNITED STATES STAMPS



THE MAGNA CARTA, THE BASIS OF ENGLISH AND AMERICAN LAW, WAS SIGNED BY KING JOHN IN 1215 AND THIS STAMP COMMEMORATES ITS 750TH ANNIVERSARY IN 1965. THE TWO PANELS ON THE STAMP SHOW KING JOHN'S CROWN ON THE LOWER AND A PROCESSION OF THE ENGLISH BARONS RIDING HORSES ON THE UPPER ONE.



IN 1868, THE TERRITORY IN OKLAHOMA KNOWN AS THE CHEROKEE STRIP WAS OPENED TO HOMESTEADERS, AND THOUSANDS OF POTENTIAL SETTLERS RACED FROM THE STARTING LINE TO STAKE A CLAIM AS THE STARTING GUN WAS FIRED. THIS 1968 ISSUES SHOWS A LIGHT HORSE-DRAWN CARRIAGE AND ALSO TWO MOUNTED RIDERS IN THE BACKGROUND.



GRANDMA MOSES, A FOLK ART PAINTER WHO BEGAN HER CAREER VERY LATE IN LIFE, HAS ONE OF HER WORKS, "JULY FOURTH", SHOWN ON THIS STAMP FROM 1969. THE SCENE SHOWS A NEW ENGLAND VILLAGE CELEBRATION OF THE HOLIDAY, AND TWO HORSE-DRAWN CARRIAGES ARE INCLUDED IN THE DEPICTION OF THE PARADE.

THE HORSE ON UNITED STATES STAMPS



THE CHRISTMAS STAMP FOR 1969 SHOWS A SCENE TITLED "WINTER IN NORWAY, MAINE" BY AN UNKNOWN ARTIST. A HORSE DRAWING A SLEIGH, OR PUNG, AS IT'S KNOWN IN THE AREA, IS IN THE CENTRAL PART OF THE PICTURE. THE STAMP IS BEST KNOWN FOR ITS USE AS AN EXPERIMENT WITH PRECANCELED STAMPS IN BALTIMORE, MD, ATLANTA, GA, NEW HAVEN, CT AND MEMPHIS, TN WHICH COULD BE USED BY THE GENERAL PUBLIC IN AN ATTEMPT TO LIGHTEN THE LOAD OF HOLIDAY MAIL REQUIRING CANCELS.



THE DEDICATION OF THE STONE MOUNTAIN MEMORIAL IN GEORGIA WAS THE OCCASION FOR THE ISSUE OF THIS STAMP IN 1970. THE ENTIRE AREA OF THE STAMP IS DEDICATED TO ROBERT E. LEE, JEFFERSON DAVIS AND STONEWALL JACKSON OF CIVIL WAR FAME, RIDING TOGETHER ON HORSEBACK.

THE HORSE ON UNITED STATES STAMPS



AN ANTIQUE CAST IRON HORSE IS ONE OF A BLOCK OF FOUR DIFFERENT STAMPS ISSUED FOR CHRISTMAS IN 1970. ALL OF THE STAMPS SHOW CHILDREN'S TOYS OF SIMILAR VINTAGE. AS IN 1969, IT WAS ISSUED BOTH UNCANCELED AND PRECANCELED, THE LATTER HAVING CURVED LINES RATHER THAN CITY NAMES.

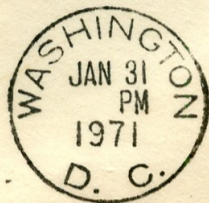
THE PRECANCELED 1970 CHRISTMAS ISSUES ARE UNUSUAL IN THAT THEY ARE THE ONLY U.S. STAMPS SINCE THE CIVIL WAR TO BE DEMONETIZED, AND COULD NOT BE USED AFTER JANUARY 31, 1971 FOR POSTAGE.

THE HORSE ON UNITED STATES STAMPS



1st. Print

U. S. STAMPS DEMONETIZED



**All 1970 Christmas Precancels
Invalidated after January 31, 1971**



2nd. Print



THE CHRISTMAS TOYS STAMPS SHOWN ON THE PREVIOUS PAGE WERE PRECANCELED TO HELP ALLEVIATE THE LOAD IN POST OFFICES DURING THE HOLIDAY SEASON. THE EXPERIMENT WAS APPARENTLY NOT A SUCCESS, AS THESE STAMPS AS WELL AS THE RELIGIOUS PAINTING ISSUE OF THE SAME YEAR USED ON THIS ENVELOPE WERE MADE INVALID FOR POSTAGE AFTER JANUARY 31, 1971

THEY ARE THE ONLY UNITED STATES STAMPS EVER DEMONETIZED BY THE POST OFFICE EXCEPT ALL THE STAMP ISSUES IN USE IN 1861, WHEN THEY WERE INVALIDATED TO PREVENT THE STOCKS IN CONFEDERATE HANDS BEING USED OR REDEEMED FOR CASH.

THE HORSE ON UNITED STATES STAMPS



AMONG THE EARLIEST STAMPS ISSUED FOR THE CELEBRATION OF THE UNITED STATES BICENTENNIAL, THESE 1973 "RISE OF THE SPIRIT OF INDEPENDENCE" STAMPS HAVE A MOUNTED POST RIDER ON ONE AND THE OTHER HAS A MOUNTED RIDER IN THE BACKGROUND. THE FULL SET OF FOUR DEPICTS DIFFERENT WAYS OF SPREADING INFORMATION FURTHERING INDEPENDENCE FROM GREAT BRITAIN.



THE WILLA CATHER STAMP OF 1973 IS ONE OF A SERIES OF FOR DEPICTING AMERICAN ARTS. THE HORSE AND COVERED WAGON, A REFERENCE TO HER WORK, "O PIONEERS", IS AT THE RIGHT, ALMOST HIDDEN BY HER PORTRAIT.



A SERIES OF THREE STAMPS HONORING "RURAL AMERICA" IN 1973 AS ITS THEME HAS AS ONE MEMBER A CHAUTAUQUA TENT WITH HORSES AND BUGGIES IN THE FOREGROUND. THE CHAUTAUQUA MOVEMENT, NAMED AFTER ITS FIRST OCCURANCE AT LAKE CHAUTAUQUA IN NEW YORK, WAS POPULAR IN THE LATE 1800S AND EARLY 1900S. IT WAS AN ADULT EDUCATION PROGRAM WHICH BROUGHT ENTERTAINMENT, SPEAKERS, MUSICIANS AND PREACHERS TO RURAL AREAS. ALTHOUGH THERE WERE PERMANENT SITES, THERE WERE ALSO TRAVELING PERFORMANCES USUALLY SET UP IN TENTS LIKE THAT SHOWN ON THE STAMP.

THE HORSE ON UNITED STATES STAMPS



A GROUP OF RACE HORSES ROUNDING A TURN AT CHURCHILL DOWNS IN KENTUCKY IS SHOWN ON THIS STAMP FROM 1974 CELEBRATING HORSE RACING IN GENERAL AND THE CENTENNIAL OF CHURCHILL DOWNS SPECIFICALLY.



THE LEGEND OF SLEEPY HOLLOW IS THE SUBJECT OF THIS STAMP ISSUED IN 1974. PART OF THE AMERICAN FOLKLORE SERIES, IT SHOWS THE HEADLESS HORSEMAN PURSUING ICHABOD CRANE IN THE CLASSIC STORY BY WASHINGTON IRVING.



A POPULAR CURRIER AND IVES PRINT TITLED "THE ROAD - WINTER" GRACES THIS 1974 CHRISTMAS ISSUE, SHOWING A COUPLE IN WINTER DRIVING THEIR HORSE-DRAWN SLEIGH ALONG THE ROAD.

THE HORSE ON UNITED STATES STAMPS



1975 SAW ANOTHER SERIES ISSUED AS A PRELUDE TO THE U.S. BICENTENNIAL CELEBRATION. THIS ONE FEATURED "CONTRIBUTORS TO THE CAUSE", INDIVIDUALS WHO BECAME FAMOUS FOR THEIR ACTIONS BEFORE OR DURING THE REVOLUTIONARY WAR. THE LOW VALUE, THE 8¢ SYBIL LUDINGTON STAMP, SHOWS THE SIXTEEN-YEAR-OLD GIRL FURIOUSLY RIDING HER HORSE TO AWAKEN THE MILITIA AS THE BRITISH APPROACH.

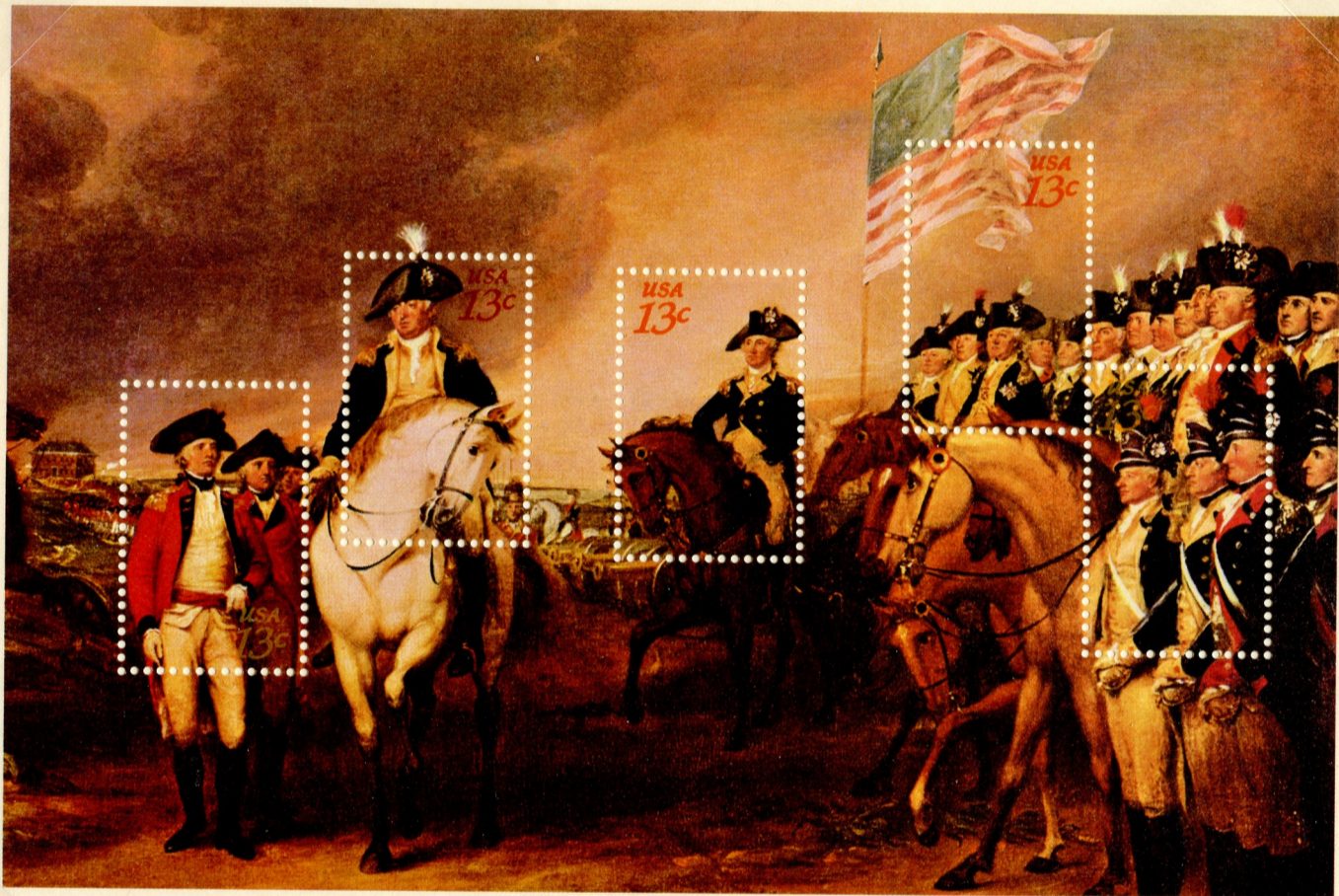


"THE BIRTH OF LIBERTY", A PAINTING BY HENRY SANDHAM, IS THE SUBJECT OF THIS 1975 ISSUE CELEBRATING THE BICENTENNIAL OF THE BATTLE OF LEXINGTON AND CONCORD IN MASSACHUSETTS IN 1775. THE FOREGROUND SHOWS COLONIAL TROOPS OPPOSED BY BRITISH SOLDIERS. AT THE RIGHT SIDE, A BRITISH OFFICER ON HORSEBACK IS FIRING A PISTOL AT THE AMERICANS.



TWO HUNDRED YEARS OF GOVERNMENT POSTAL SERVICE WAS COMMEMORATED BY A BLOCK OF FOUR STAMPS ISSUED IN 1975, SHOW EARLY AND MODERN METHODS OF DELIVERING THE MAIL. A STAGECOACH DRAWN BY A TEAM OF FOUR HORSES IS THE SUBJECT OF ONE OF THESE.

THE HORSE ON UNITED STATES STAMPS

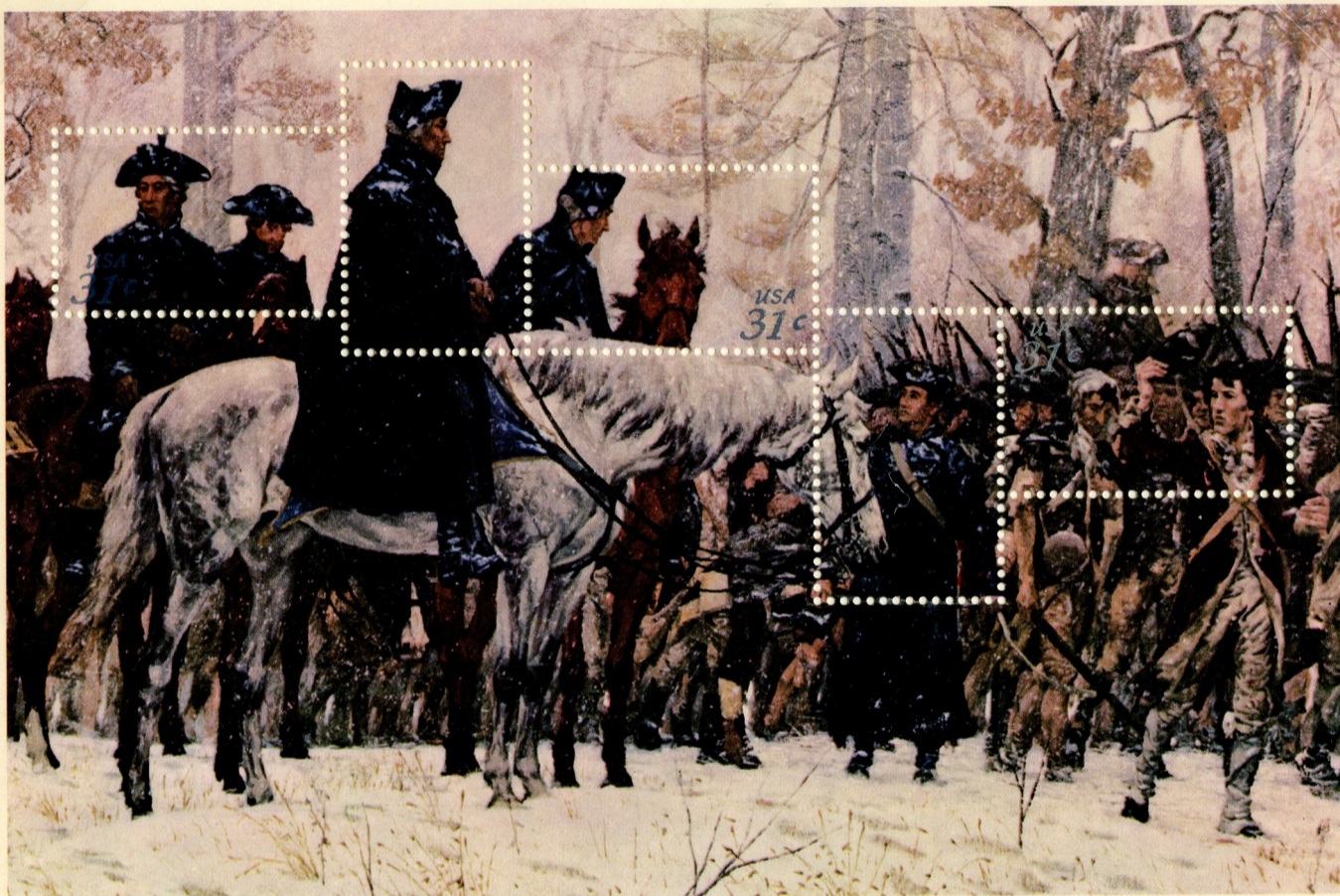


The Surrender of Lord Cornwallis at Yorktown
From a Painting by John Trumbull



AT THE INTERPHIL 76 STAMP SHOW IN PHILADELPHIA, A PACKET OF FOUR SOUVENIR SHEETS WAS ISSUED FOR THE U.S. BICENTENNIAL. EACH HAD FIVE STAMPS IN VARIOUS PARTS OF THE PAINTINGS ON THE SHEETS, AND EACH SHEET HAD A DIFFERENT DENOMINATION. THE 13¢ SHEET SHOWN HERE HAS JOHN TRUMBULL'S PAINTING OF THE BRITISH GENERAL, CORNWALLIS SURRENDERING TO WASHINGTON AT YORKTOWN, AND MANY HORSES OF BOTH SIDES ARE LINED UP FACING EACH OTHER.

THE HORSE ON UNITED STATES STAMPS

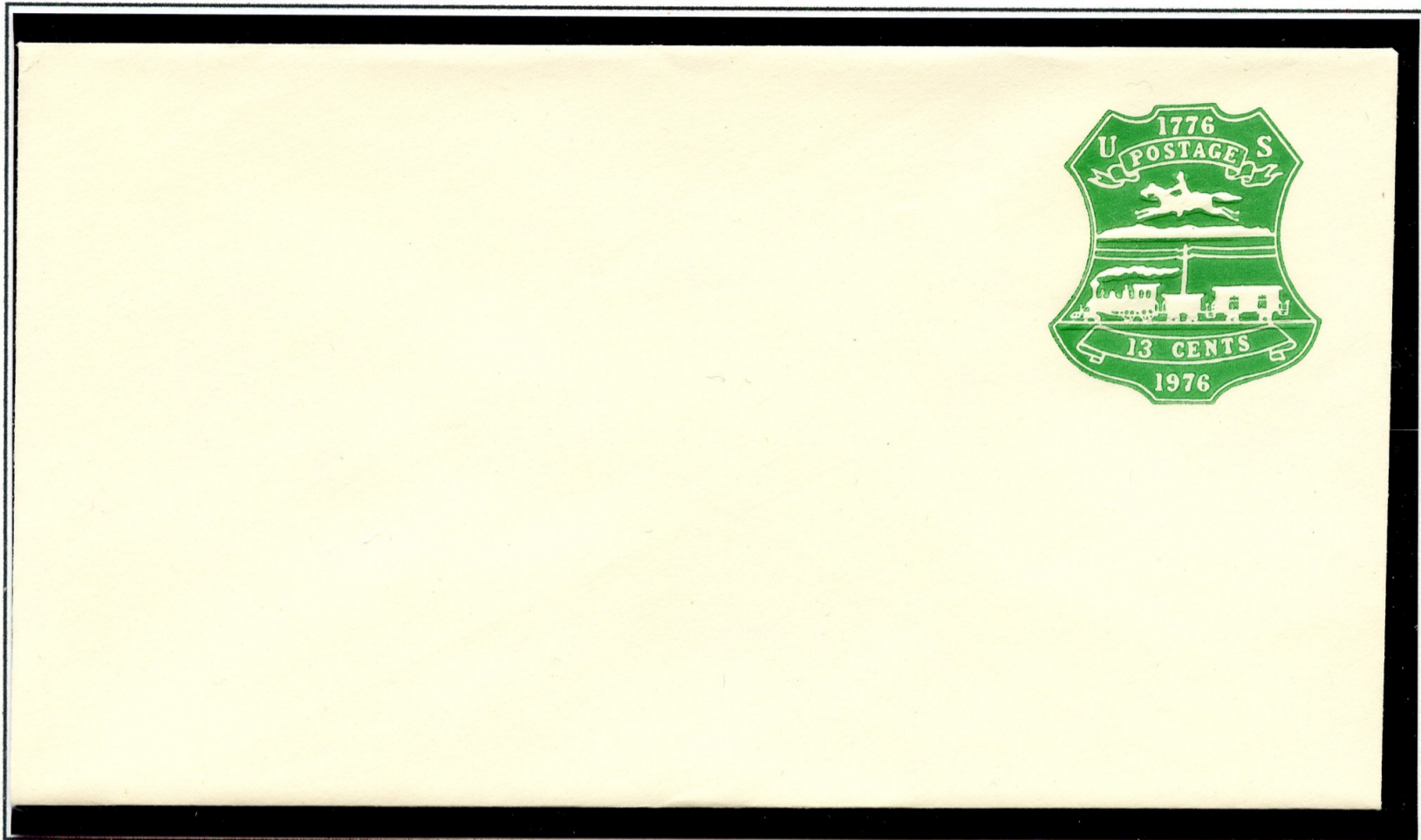


Washington Reviewing His Ragged Army at Valley Forge
From a Painting by William T. Trego



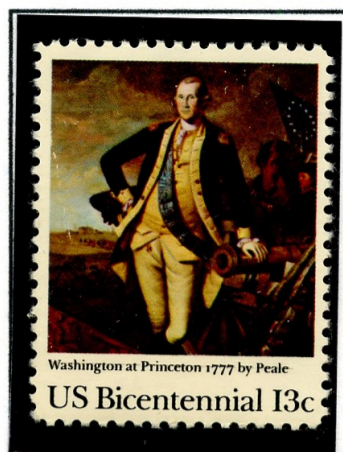
THE 31¢ DENOMINATION OF THE SAME SET HAS AS ITS SUBJECT WILLIAM TREGO'S PAINTING OF GEORGE WASHINGTON ON HORSEBACK REVIEWING HIS TROOPS AT THE VALLEY FORGE WINTER ENCAMPMENT.

THE HORSE ON UNITED STATES STAMPS



TO CELEBRATE THE BICENTENNIAL OF THE UNITED STATES IN 1976, AN ENVELOPE WAS ISSUED WHICH REPRODUCED THE DESIGN OF THE ONE ISSUED IN 1876 FOR THE NATION'S CENTENNIAL. THE ONLY CHANGE WAS IN THE DATE AT THE TOP, READING 1976 INSTEAD OF 1876. IT CAME IN GREEN ONLY.

THE HORSE ON UNITED STATES STAMPS



THE BICENTENNIAL OF WASHINGTON'S VICTORY OVER LORD CORNWALLIS AND HESSIAN TROOPS AT THE BATTLE OF PRINCETON, NEW JERSEY IS COMMEMORATED ON THIS STAMP SHOWING A CHARLES WILLSON PEALE PAINTING. HIS HORSE IS BEHIND HIM BY THE FLAG.



HARRIET TUBMAN WAS AN ESCAPED SLAVE FROM MARYLAND WHO DEDICATED THE REST OF HER LIFE TO ASSISTING AND GUIDING OTHER SLAVES TO FREEDOM IN THE NORTH AND CANADA. AS A "CONDUCTOR" ON THE NOTORIOUS "UNDERGROUND RAILROAD", SHE IS KNOWN TO HAVE HELPED OVER 300 PERSONS ESCAPE ENSLAVEMENT TO BE RESETTLED AS FREE MEN.



IN 1979, THE U.S. POSTAL SERVICE ISSUED A SERIES OF STAMPS PROMOTING THE 1980 OLYMPIC GAMES IN MOSCOW. A BLOCK OF FOUR 15¢ STAMPS SHOWED SUMMER GAMES, ONE OF WHICH IS THE EQUESTRIAN EVENT WITH A HORSE JUMPING A BARRIER. THE U.S. LATER BOYCOTTED THE GAMES OVER HUMAN RIGHTS ISSUES IN THE SOVIET UNION.

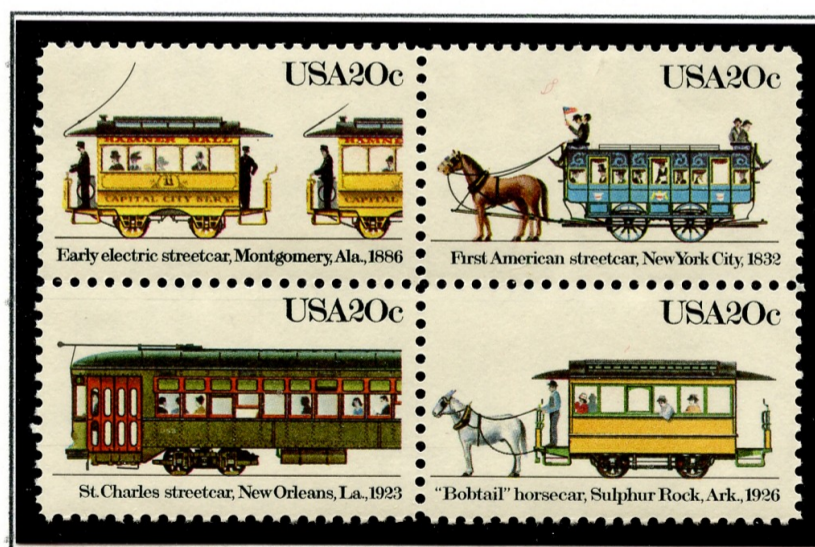
THE HORSE ON UNITED STATES STAMPS



THE 1978 SECULAR TYPE OF THE CHRISTMAS STAMP ISSUE SHOWS A SMALL SIZED STAMP SIMPLY ILLUSTRATING A CHILD RIDING A HOBBY HORSE.



FREDERIC REMINGTON, THE FAMOUS AMERICAN SCULPTOR, IS HONORED ON THIS STAMP ISSUED IN 1981. SHOWN IS ONE OF HIS MAJOR WORKS, "COMING THROUGH THE RYE", WHICH HAS THREE MOUNTED COWBOYS RIDING TOGETHER.



ALL THE EARLY AMERICAN STREETCARS RAN ON RAILS BUT WERE DRAWN BY HORSES. TWO TYPES OF THESE ARE SHOWN ON THIS BLOCK OF FOUR STAMPS FROM 1983. THE EARLIEST KNOWN AMERICAN STREETCAR, FROM 1832, IS SHOWN ON ONE STAMP WHILE ANOTHER SHOWS A 1926 ARKANSAS HORSE DRAWN MODEL. THE 1923 ELECTRIC POWERED ST. CHARLES CAR STILL OPERATES IN NEW ORLEANS, LOUISIANA.

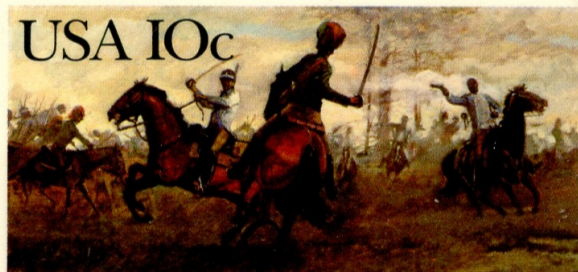
THE HORSE ON UNITED STATES STAMPS



Casimir Pulaski, Savannah, 1779

© USPS 1979

THIS POSTCARD CELEBRATES THE 200TH ANNIVERSARY OF CASIMIR PULASKI'S DEATH. HE WAS A POLISH NOBLEMAN WHO SERVED WITH WASHINGTON IN THE REVOLUTIONARY WAR. HE IS SHOWN AT THE BATTLE OF SAVANNAH IN 1779.



Battle of Cowpens, 1781

© USPS 1980

COLONELS WASHINGTON AND TARLETON ARE SHOWN ON THIS POSTCARD CELEBRATING THE BICENTENARY OF THE 1781 BATTLE OF COWPENS, SOUTH CAROLINA DURING THE REVOLUTION..

THE HORSE ON UNITED STATES STAMPS



Nathanael Greene, Eutaw Springs, 1781

© USPS 1981

NATHANIEL GREENE IS PICTURED HERE WITH SOME OF HIS MOUNTED OFFICERS AT THE BATTLE OF EUTAW SPRINGS, SOUTH CAROLINA. THE BICENTENNIAL OF THE BATTLE IS COMMEMORATED ON THIS CARD ISSUED IN 1981.



"Swamp Fox" Francis Marion, 1782

© USPS 1982

GENERAL FRANCIS MARION, KNOWN AS THE "SWAMP FOX", IS SHOWN WITH HIS TROOPS ON A FLATBOAT. THE POSTCARD WAS ISSUED IN 1982 IN MARION, SOUTH CAROLINA, NAMED AFTER THE GENERAL.

THE HORSE ON UNITED STATES STAMPS

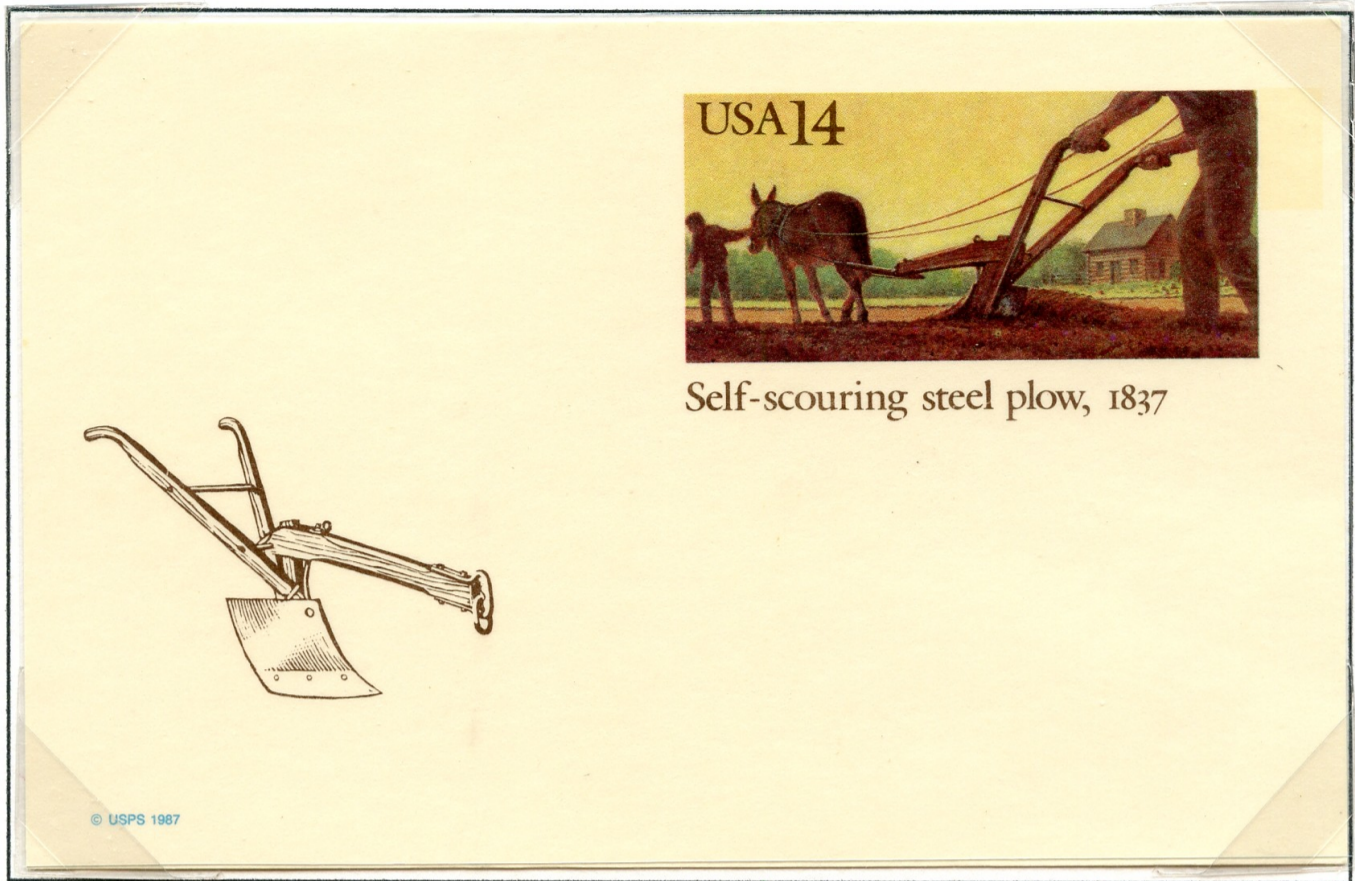


FOUR DIFFERENT BREEDS OF HORSES ARE SHOWN ON THIS BLOCK OF FOUR STAMPS ISSUED IN 1985. THEY ARE THE QUARTER HORSE, THE MORGAN, THE SADDLEBRED AND THE APPALOOSA, WHICH HAS A COLT BY THE MARE.

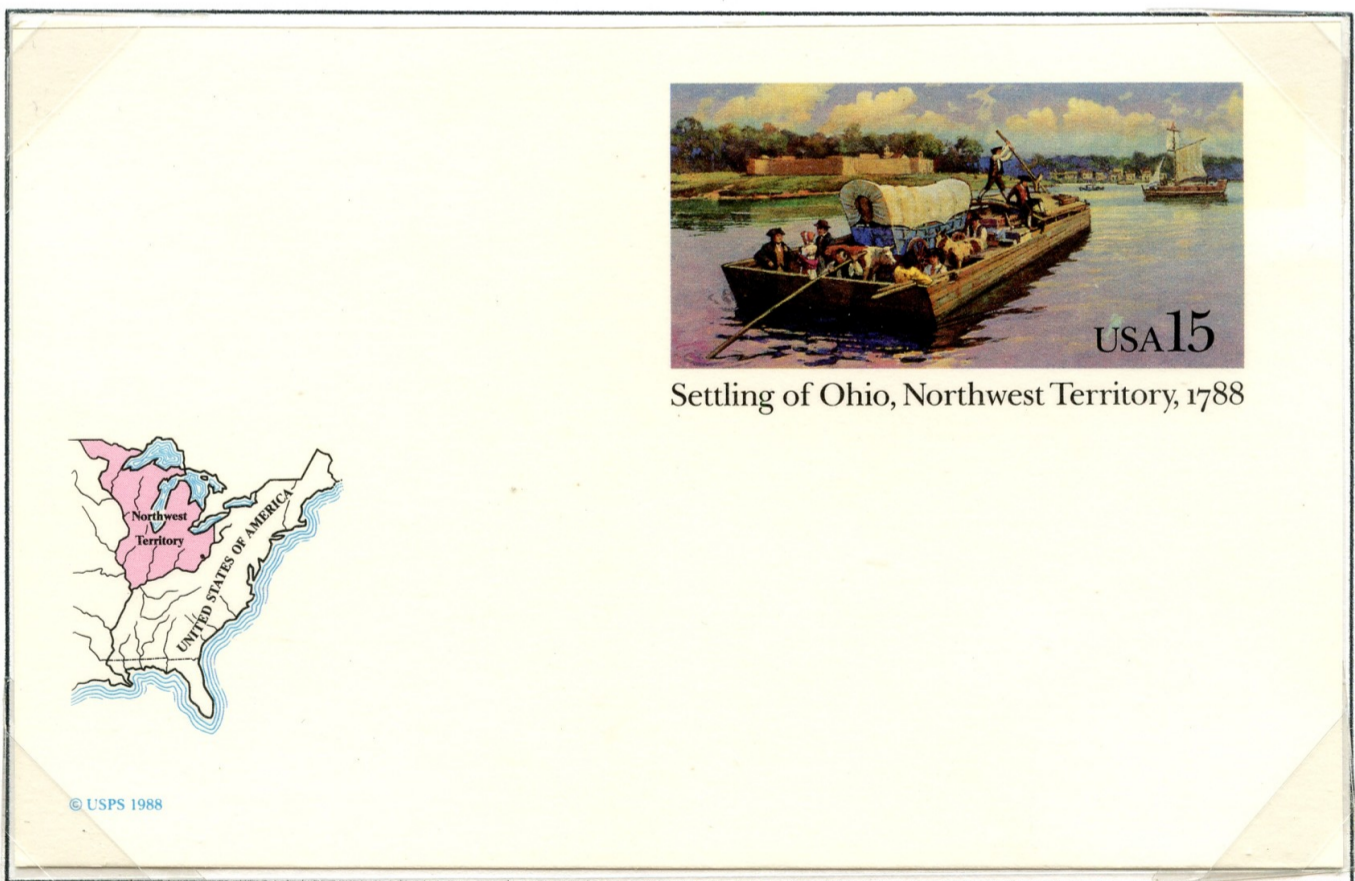


BETWEEN 1987 AND 1990, A SERIES OF STAMPS WAS ISSUED WHICH HONORED THE THIRTEEN ORIGINAL COLONIES IN THE ORDER IN WHICH THEY RATIFIED THE CONSTITUTION. THE ISSUE FOR MASSACHUSETTS IS A SCENE IN FRONT OF FANUEL HALL IN BOSTON WITH MOUNTED PEOPLE AT THE SIDE. THE VIRGINIA STAMP SHOWS A HORSE-DRAWN CARRIAGE IN FRONT OF THE GOVERNOR'S PALACE IN COLONIAL WILLIAMSBURG. A STREET SCENE IN DOWNTOWN NEW YORK CITY IS ON THE NEW YORK STAMP AND SHOWS SEVERAL CARRIAGES IN THE FOREGROUND.

THE HORSE ON UNITED STATES STAMPS



THE SELF-SCOURING STEEL PLOW WAS INVENTED BY BLACKSMITH JOHN DEERE IN 1837. THIS CARD, ILLUSTRATED WITH A SKETCH AND A PICTURE OF IT IN USE WAS ISSUED ON ITS 150TH ANNIVERSARY.



SETTLERS ON A FERRY WITH THEIR HORSES AND POSSESSIONS ARE SHOWN ON A CARD AS THEY CRUISE DOWN THE OHIO RIVER IN WHAT WAS THEN PART OF THE NORTHWEST TERRITORY, WHICH IS SHOWN AT THE LOWER LEFT CORNER.

THE HORSE ON UNITED STATES STAMPS



PART OF THE AMERICAN FOLK ART SERIES IS THIS BLOCK OF FOUR STAMPS DISPLAYING CAROUSEL ANIMALS. CERTAINLY, NO CAROUSEL WOULD BE COMPLETE WITHOUT A HORSE.



THIS STAMP, ISSUED FOR THE 100TH ANNIVERSARY OF MONTANA'S STATEHOOD IN 1989 HAS ANOTHER OF CHARLES RUSSELL'S PAINTINGS AS ITS SUBJECT. THIS ONE, "C.M. RUSSELL AND FRIENDS", IS A SELF-PORTRAIT OF HIMSELF ON A HORSE WITH SEVERAL MOUNTED RIDERS NEARBY.

THE HORSE ON UNITED STATES STAMPS



20th Universal Postal Congress



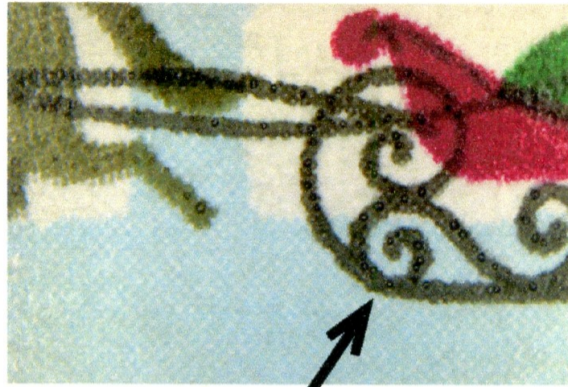
A review of historical methods of delivering the mail in the United States is the theme of these four stamps issued in commemoration of the convening of the 20th Universal Postal Congress in Washington, D.C. from November 13 through December 14, 1989. The United States, as host nation to the Congress for the first time in ninety-two years, welcomed more than 1,000 delegates from most of the member nations of the Universal Postal Union to the major international event.

©USPS 1988



FOR THE 20TH CONGRESS OF THE UNIVERSAL POSTAL UNION, FOUR STAMPS DEPICTING TRADITIONAL MAIL DELIVERY WERE ISSUED BOTH AS PERRFORATED SHEET STAMPS AND AS A BLOCK OF FOUR ON A SOUVENIR SHEET. A STAGE COACH AND TEAM OF HORSES IS ON ONE OF THE STAMPS.

THE HORSE ON UNITED STATES STAMPS



THE 1988 CHRISTMAS STAMP SHOWS A TROTting HORSE PULLING A SLEIGH IN A COUNTRY WINTER SCENE. THE NORMAL STAMP IS AT THE TOP OF THE PAGE. THE LOWER EXAMPLE SHOWS AN ERROR WHICH OCCURS ON ONLY ONE STAMP IN A SHEET OF ONE HUNDRED. THE CURLICUE LIKE THE ONE INSIDE THE LOOP ON THE REAR RUNNER SUPPORT IS MISSING FROM THE ONE ON THE FRONT.

THE HORSE ON UNITED STATES STAMPS



Settling of Oklahoma

15
USA

First Land Run, 1889
Territory Established, 1890
Cherokee Strip Run, 1893

© USPS 1989

OKLAHOMA WAS FIRST SETTLED THROUGH "LAND RUNS" IN 1889 AND 1893. MEN ON HORSEBACK AND ON HORSE-DRAWN WAGONS ARE DEPICTED RACING TO STAKE CLAIMS LAND AFTER THE STARTING GUN WAS FIRED.



USA 20

©1996 USPS recycled

A WINTER SCENE IN UPSTATE NEW YORK APPEARS ON THIS POSTCARD ISSUED IN 1996. IT SHOWS A LARGE HORSE-DRAWN SLEIGH PULLED BY A TEAM OF HORSES AS THEY APPROACH A FARMHOUSE.

THE HORSE ON UNITED STATES STAMPS



A BLOCK OF FOUR STAMPS CELEBRATING CLASSIC MOTION PICTURES APPEARED IN 1990. ONE OF THESE WAS "STAGECOACH", STARRING JOHN WAYNE. A STAGECOACH DRAWN BY A TEAM OF HORSES LIES BENEATH HIS PORTRAIT.

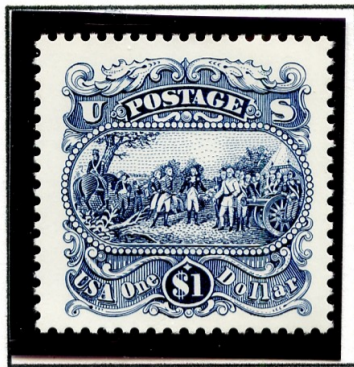


THE BICENTENARY OF THE DISTRICT OF COLUMBIA WAS CELEBRATED BY THE ISSUE OF THIS STAMP, WHICH SHOWS A SCENE, CIRCA 1905, LOOKING TOWARD THE CAPITOL DOWN PENNSYLVANIA AVENUE. A NUMBER OF HORSE-DRAWN VEHICLES ARE ON THE AVENUE.



THE 500TH ANNIVERSARY OF CHRISTOPHER COLUMBUS' DISCOVERY OF AMERICA WAS COMMEMORATED IN 1992 BY THE ISSUANCE OF SIX SOUVENIR SHEETS. THEY REPRODUCED THE ENTIRE SET OF SIXTEEN STAMPS ISSUED FOR THE 400TH ANNIVERSARY USING THE ORIGINAL DIES. TWO OF THE STAMPS, THE 6¢ AND 50¢ VALUES, HAVE HORSES IN THEIR VIGNETTES. THE ORIGINALS ARE SHOWN ON THE SECOND PAGE OF THIS COLLECTION. SPAIN, PORTUGAL AND ITALY ALSO ISSUED VERY SIMILAR SHEETS FOR THE OCCASION.

THE HORSE ON UNITED STATES STAMPS



THIS 1994 \$1.00 REGULAR ISSUE STAMP LOOKS LIKE IT CAME FROM AN EARLIER ERA, HAVING AN ENGRAVED DEPICTION OF JOHN TRUMBULL'S JOHN TRUMBULL'S PAINTING, "THE SURRENDER OF GENERAL BURGOYNE AT SARATOGA" AMID SCROLLWORK REMINISCENT OF THE 1800S. AN OFFICER SEATED ON A HORSE IS LOCATED IN FRONT OF THE TREE AT THE LEFT SIDE OF THE VIGNETTE.



THE 1992 CHRISTMAS STAMP ISSUE FOLLOWS A FAMILIAR THEME: ANTIQUE CHILDREN'S TOYS IN A BLOCK OF FOUR. THIS TIME THE HORSE IS ON A WHEELED STAND AND IS RIDDEN BY A JOCKEY AS HE GALLOPS.



THIS STAMP COMMEMORATES THE CENTENNIAL OF THE 1893 CHEROKEE STRIP LAND RUN, IN WHICH SETTLERS RACED TO STAKE CLAIMS AS SOON AS THE STARTING GUN WAS FIRED. BOTH A MAN ON HORSEBACK AND A WAGON DRAW BY A TEAM OF HORSES ARE SHOWN.

THE HORSE ON UNITED STATES STAMPS

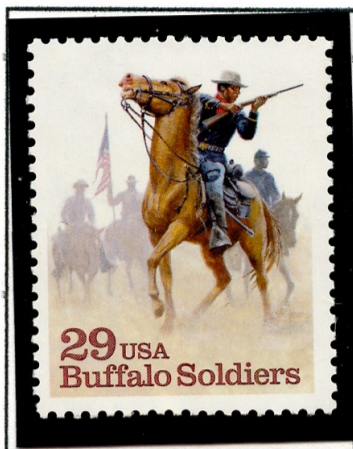


SPORTING HORSES ARE THE SUBJECT OF THIS BLOCK OF FOUR STAMPS ISSUED IN 1993. EACH REPRESENTS A DIFFERENT SPORT FEATURING HORSES. THEY ARE POLO, STEEPLECHASE, AND THOROUGHBRED AND HARNESS RACING.



THE OPENING OF THE NATIONAL POSTAL MUSEUM IN WASHINGTON WAS CELEBRATED WITH THE ISSUE OF A BLOCK OF FOUR STAMPS IN 1993. VARIOUS ILLUSTRATIONS FROM THE HISTORY OF MAIL DELIVERY ARE SHOWN, INCLUDING A PONY EXPRESS RIDER ON ONE STAMP AND A COLONIAL ERA POST RIDER ON ANOTHER.

THE HORSE ON UNITED STATES STAMPS



A SOLDIER ON HORSEBACK HOLDING HIS RIFLE IS ILLUSTRATED ON A 1994 STAMP HONORING "BUFFALO SOLDIERS", WHO WERE EXCLUSIVELY BLACK MEMBERS OF THE ARMY'S 10TH CAVALRY REGIMENT AT FORT LEAVENWORTH, KANSAS, WHICH WAS FORMED IN 1866. THE TERM WAS LATER EXPANDED TO INCLUDE THE 9TH CAVALRY REGIMENT AND THE 24TH AND 25TH INFANTRY REGIMENTS. THE TERM "BUFFALO SOLDIERS" WAS GIVEN TO THEM BY THE INDIANS WHOM THEY FOUGHT.

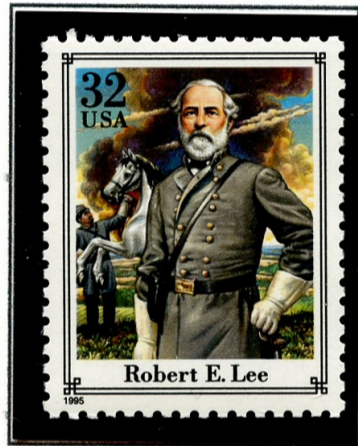


A PANE OF TWENTY DIFFERENT STAMPS WAS ISSUED IN 1994 HONORING "LEGENDS OF THE WEST". ALMOST ALL ARE OF INDIVIDUALS, BUT THE "HOME ON THE RANGE" STAMP SHOWS A GENERIC COWBOY AND THE OVERLAND STAGE IS PICTURED ON ANOTHER. LEGENDARY COWBOY BILL PICKETT APPEARS ON THE OTHER STAMP, A REISSUE REPLACING THE RECALLED ORIGINAL, WHICH PICTURED HIS BROTHER BY MISTAKE.

THE HORSE ON UNITED STATES STAMPS

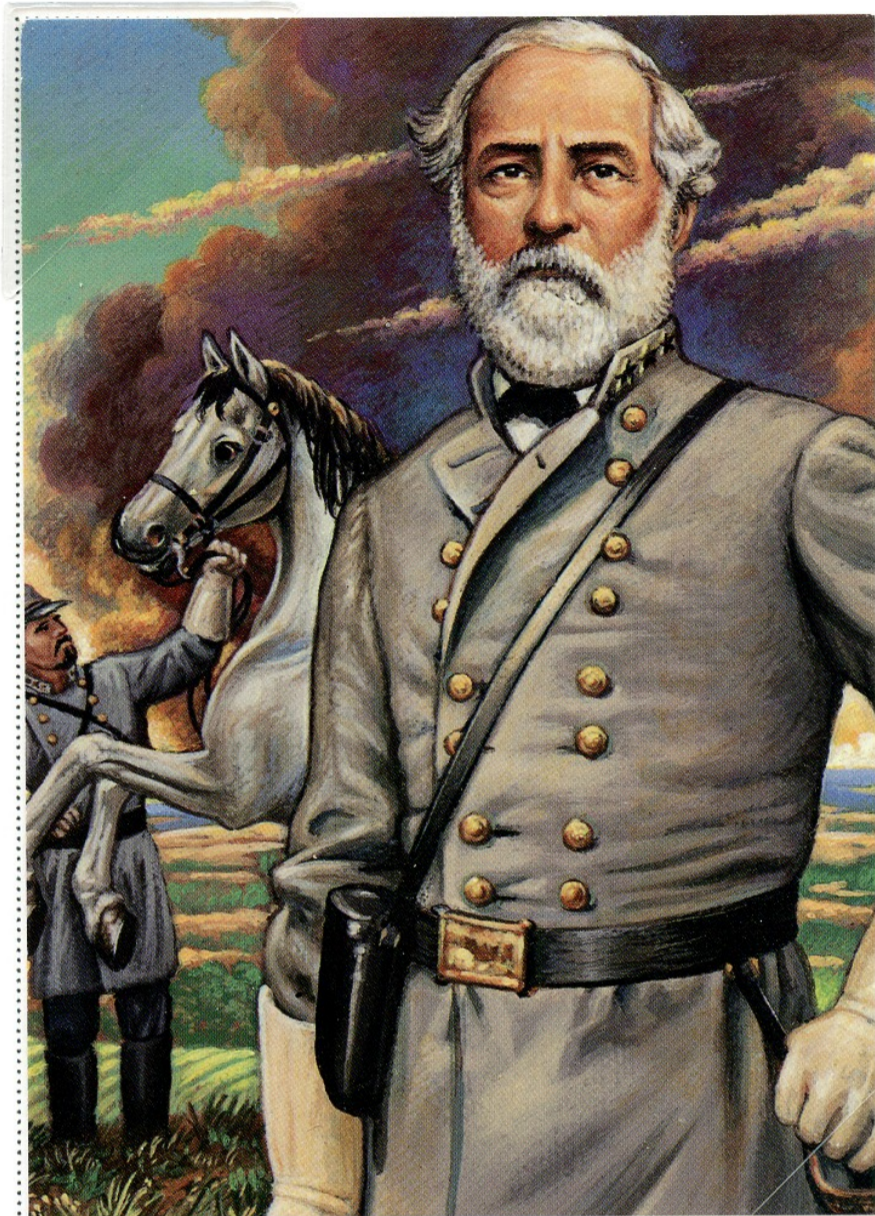


A 1995 ISSUE COMMEMORATING TEXAS STATEHOOD IN 1845 DEPICTS A TEXAN ON A REARING HORSE WHILE HE CARRIES THE TEXAS STATE FLAG ON A STAFF IN HIS RIGHT HAND.



A SHEET OF TWENTY DIFFERENT STAMPS SIMILAR TO THE ONE FOR THE "LEGENDS OF THE WEST" APPEARED IN 1995 SHOWING PERSONAGES AND EVENTS OF THE CIVIL WAR. FOUR OF THE TWENTY SHOW HORSES. THEY ARE THE ONES HONORING ROBERT E. LEE, STAND WATIE, WINFIELD HANCOCK AND STONEWALL JACKSON. ALL ARE ASTRIDE THEIR MOUNTS EXCEPT LEE, WHOSE HORSE APPEARS BEHIND HIM.

THE HORSE ON UNITED STATES STAMPS



Robert E. Lee

ROBERT E. LEE WAS COMMANDER OF THE ARMY OF NORTHERN VIRGINIA. LEE WAS VICTORIOUS AT SECOND MANASSAS, THE SEVEN DAYS CAMPAIGN AND CHANCELLORSVILLE. AFTER A SERIES OF LOSSES, HE WAS FORCED TO SURRENDER TO GENERAL GRANT IN 1865 AT APPOMATTOX.

THE HORSE ON UNITED STATES STAMPS



Stand Watie

STAND WATIE WAS THE ONLY INDIAN GENERAL OFFICER OF THE CONFEDERACY. HE RAISED A REGIMENT OF CHEROKEES WHICH FOUGHT AT PEA RIDGE. HE WAS NOTED AS THE LAST GENERAL OF THE C.S.A. TO SURRENDER.

THE HORSE ON UNITED STATES STAMPS

Confederate General

Robert Edward Lee (1807-1870)

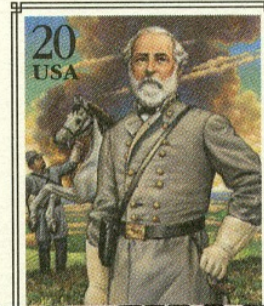
Army of Northern Virginia Commander, 1862-65.

Won Seven Days' Campaign, 2nd Manassas,

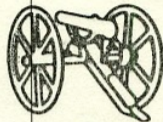
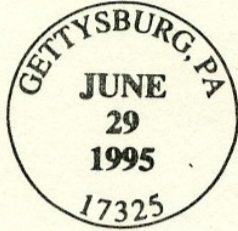
Chancellorsville. Repelled at Gettysburg.

Surrendered April 9, 1865. Became college president.

© 1994 USPS



Robert E. Lee



CIVIL WAR

CLASSIC COLLECTION

FIRST DAY OF ISSUE

FIRST DAY OF ISSUE CANCEL

Confederate Brig. General

Stand Watie (De-ga-do-ga) (1806-1871)

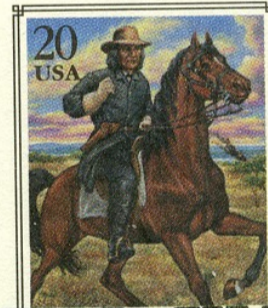
Known for guerrilla tactics tying down Union troops.

Sole CSA Indian General raised Cherokee regiment,

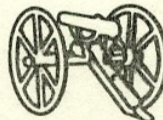
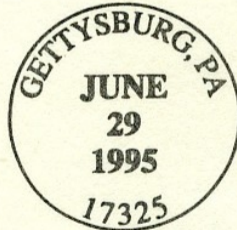
fought at Pea Ridge, captured federal steamboat.

Last CSA General to surrender.

© 1994 USPS



Stand Watie



CIVIL WAR

CLASSIC COLLECTION

FIRST DAY OF ISSUE

FIRST DAY OF ISSUE CANCEL

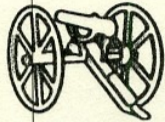
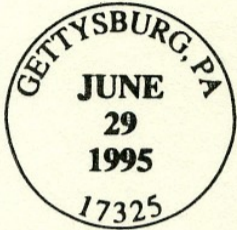
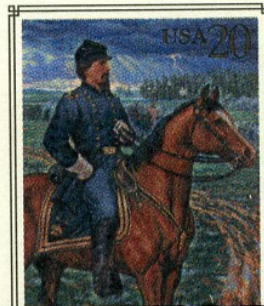
THE HORSE ON UNITED STATES STAMPS

Union Major General

Winfield Scott Hancock (1824-1886)

Brigade, Division, Corps Commander at Fredericksburg, Chancellorsville. Played major role in Union victory at Gettysburg, but was severely wounded. Presidential candidate 1880.

© 1994 USPS



CIVIL WAR
CLASSIC COLLECTION
FIRST DAY OF ISSUE

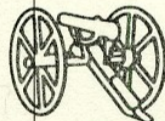
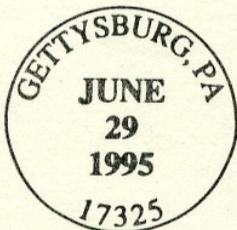
FIRST DAY OF ISSUE CANCEL

Confederate Lt. General

Thomas Jonathan Jackson (1824-1863)

Nicknamed "Stonewall" at First Manassas. Brilliant tactician in Shenandoah Valley Campaign. Fatally wounded by own men after routing Union right flank at Chancellorsville.

© 1994 USPS



CIVIL WAR
CLASSIC COLLECTION
FIRST DAY OF ISSUE

FIRST DAY OF ISSUE CANCEL



Winfield Hancock

GENERAL WINFIELD SCOTT HANCOCK WAS A CORPS COMMANDER AT FREDERICKSBURG AND CHANCELLORSVILLE, AND ALSO WAS A MAJOR CONTRIBUTOR TO THE VICTORY AT GETTYSBURG, WHERE HE WAS WOUNDED. HE WAS A PRESIDENTIAL CANDIDATE IN 1880.

THE HORSE ON UNITED STATES STAMPS



“Stonewall” Jackson

THOMAS “STONEWALL” JACKSON RIDES HIS MOUNT ON THIS CARD, ONE OF FOUR COMMEMORATING THE CIVIL WAR. A BRILLIANT GENERAL, HE WAS FATALLY WOUNDED BY HIS OWN CONFEDERATE TROOPS IN 1863.

THE HORSE ON UNITED STATES STAMPS



THADDEUS LOWE WAS A MOSTLY SELF-TAUGHT SCIENTIST AND INVENTOR AND WAS WELL KNOWN FOR HIS ADVANCED THEORIES OF METEOROLOGY. HE WAS ACTIVE IN BALLOONING, AND AT THE OUTBREAK OF THE CIVIL WAR OFFERED HIS SERVICES TO THE ARMY IN THE FIELD OF AERIAL RECONNAISSANCE. HE WAS APPOINTED CHIEF BALLOONIST OF THE UNION ARMY BALLOON CORP BY PRESIDENT LINCOLN. THIS AEROGRAM, ISSUED IN 1995, SHOWS HIM ON HORSEBACK AT AN ARMY CAMP WITH A BALLOON IN THE BACKGROUND, AND ANOTHER LARGER ILLUSTRATION OF THE BALLOON ITSELF AT THE LEFT.

THE HORSE ON UNITED STATES STAMPS



ANOTHER ISSUE IN THE AMERICAN FOLK ART SERIES IS THIS BLOCK OF FOUR STAMPS DISPLAYING CAROUSEL HORSES, SIMILAR TO A PREVIOUS ONE.. THIS TIME, ALL FOUR ARE HORSES.



AS PART OF A 1996 ISSUE SHOWING PREHISTORIC ANIMALS, A SPECIMEN OF EOHIPPUS IS SHOWN. A HORSELIKE ANIMAL ABOUT THE SIZE OF A LARGE DOG, AND HIS NAME IN FACT MEANS "DAWN HORSE" IN GREEK. WITH A SPOTTED COAT, A SHORT STIFF MANE LIKE A ZEBRA, A LONG TAIL WITH ONLY A TUFT OF HAIR AT THE END AND TOES WHICH HAD NOT YET EVOLVED INTO HOOVES, HE WOULD STILL BE IMMEDIATELY RECOGNIZED AS A HORSE



THE 100TH ANNIVERSARY OF RURAL FREE DELIVERY WAS COMMEMORATED IN 1996 WITH A STAMP SHOWING AN EARLY RFD WAGON WITH ITS DRIVER POSED BESIDE IT. THIS SERVICE REALLY WAS THE IMPETUS BEHIND THE GROWTH OF THE MAIL-ORDER INDUSTRY'S GIANTS, SEARS-ROEBUCK, MONTGOMERY-WARD AND J.C. PENNEY, AND EVENTUALLY ON-LINE BUSINESSES.

THE HORSE ON UNITED STATES STAMPS

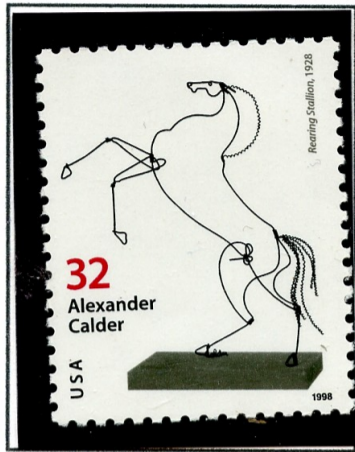


THE STAMP EXPOSITION PACIFIC 97 WAS HONORED BY A SHEET OF SIXTEEN TRIANGULAR STAMPS SHOWING MAIL DELIVERY METHODS OF THE 1890S. ONE DEPICTED A SAILING SHIP, THE OTHER ONE, SHOWN HERE, A STAGECOACH.



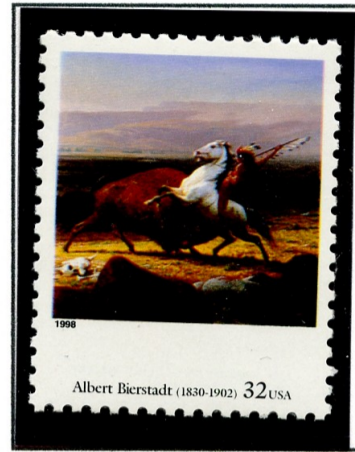
AS THE TWENTY-FIRST CENTURY APPROACHED, THE POSTAL SERVICE CREATED A SERIES OF SOUVENIR SHEETS, EACH WITH FIFTEEN STAMPS. EACH SHEET WAS DEVOTED TO A SINGLE DECADE OF THE TWENTIETH CENTURY AND SHOWED NOTEWORTHY PERSONAGES AND EVENTS PERTAINING TO THAT PERIOD. FOR THE NINETEEN TWENTIES, THE FOUR HORSEMEN OF NOTRE DAME ARE SHOWN, AND FOR THE NINETEEN SEVENTIES, SECRETARIAT IS COMMEMORATED FOR HIS TRIPLE CROWN PERFORMANCE.

THE HORSE ON UNITED STATES STAMPS



ALEXANDER CALDER'S SCULPTURE, *Rearing Stallion*, IS REPRODUCED ON THIS STAMP RELEASED IN 1998. THIS STAMP IS ONE OF A STRIP OF FIVE WHICH HONOR THE SCULPTOR.

THIS WORK DATES FROM 1928.



ALBERT BIERSTADT'S *Last of the Buffalo* CENTERS ON A WHITE HORSE RIDDEN BY AN INDIAN IN THIS PAINTING FROM THE "400 YEARS OF AMERICAN ART" MINIATURE SHEET



THE PAINTING "GALAHAD'S DEPARTURE" IS SHOWN ON THIS STAMP FROM 2001, PART OF THE TWENTY STAMP SHEET "AMERICAN ILLUSTRATORS".



FREDERIC REMINGTON'S "A DASH FOR THE TIMBER" WAS REPRODUCED ON THIS STAMP IN 2001 AS PART OF A TWENTY-STAMP PANE HONORING AMERICAN ILLUSTRATORS.

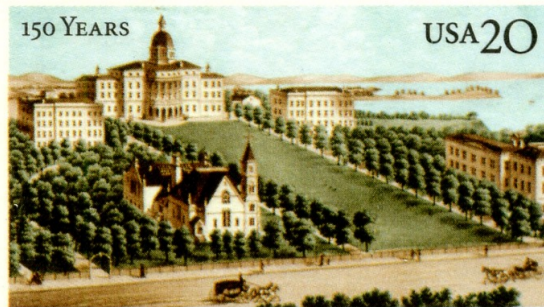
THE HORSE ON UNITED STATES STAMPS



A SOUVENIR SHEET WAS ISSUED IN 1998 TO HONOR THE CENTENARY OF OUR SECOND COMMEMORATIVE SET OF STAMPS. THESE REPRINTS FROM THE ORIGINAL DIES SHOW THEM AS BI-COLORED STAMPS, THE WAY THEY WERE ORIGINALLY INTENDED TO BE ISSUED. THE ADVENT OF THE SPANISH-AMERICAN WAR CANCELLED THOSE PLANS AND THE NINE STAMPS WERE ISSUED IN ONE COLOR ONLY.

AN INDIAN ON A HORSE HUNTING BUFFALO WITH A BOW AND ARROW IS FEATURED ON THE 4¢ STAMP. THE 8¢ VALUE SHOWS MOUNTED SOLDIERS GUARDING A WAGON TRAIN, AND THE 10¢ STAMP, "HARDSHIPS OF EMIGRATION", IS A SCENE OF SETTLERS GATHERED AROUND A COVERED WAGON WHERE ONE OF THE HORSES DRAWING IT HAS COLLAPSED IN THE REINS. THE \$2.00 STAMP'S ILLUSTRATION, "HARVESTING IN THE WEST", SHOWS MANY FARM MACHINES LINED UP TO REAP THE GRAIN ON THE HUGE FARMS OF THE PLAINS.

THE HORSE ON UNITED STATES STAMPS



University of Wisconsin-Madison • Bascom Hill

© USPS 1998 recycled

THE CAMPUS OF THE UNIVERSITY OF WISCONSIN AT MADISON IS SHOWN IN AN UNDATED ILLUSTRATION ON THIS POSTCARD. ON THE STREET IN THE FOREGROUND ARE A NUMBER OF HORSE-DRAWN VEHICLES.



© 2000 USPS recycled

THE UNIVERSITY OF SOUTH CAROLINA IS SHOWN IN A SOMEWHAT SIMILAR SETTING ON THIS 2001 POSTCARD. A MAN ON A REARING HORSE APPEARS TO BE GREETING A STANDING COUPLE IN THE CENTER FOREGROUND.

THE HORSE ON UNITED STATES STAMPS



IN APRIL OF 2002, A SHEET OF FIFTY DIFFERENT STAMPS WAS ISSUED WHICH WERE MEANT TO LOOK LIKE 1940S STYLE PICTURE POST CARDS. EACH STAMP REPRESENTED A DIFFERENT STATE WITH ITS NAME IN A BANNER AGAINST AN IMAGE OF SOMETHING NOTABLE ABOUT THAT STATE.

KENTUCKY HAS ITS RACEHORSES, LOUISIANA A HORSE-DRAWN TOURIST CARRIAGE IN THE FRENCH QUARTER, MONTANA SHOWS A BUCKING BRONCO AND NEVADA HAS A COWBOY ON A CASINO SIGN. NORTH DAKOTA IS REPRESENTED BY WILD HORSES RUNNING FREE ON THE RANGE.

THE HORSE ON UNITED STATES STAMPS



IN IN OCTOBER OF THE SAME YEAR, THE FIRST CLASS POSTAGE RATE WAS RAISED FROM 34¢ FOR THE FIRST OUNCE TO 37¢. THE SAME SET OF DESIGNS WAS REISSUED BUT AT THE NEW RATE.

THE HORSE ON UNITED STATES STAMPS



IN 2002, THE CHINESE LUNAR NEW YEAR WAS CELEBRATED BY THE ISSUE OF A 34¢ STAMP IN FULL SHEETS. SUBSEQUENTLY, A 37¢ STAMP WAS ISSUED IN 2005, BUT ONE OF TWELVE DIFFERENT STAMPS, ONE FOR EACH OF THE LUNAR CYCLE. A SIMILAR SHEET APPEARED IN 2006, BUT WITH A 39¢ DENOMINATION FOR THE RATE INCREASE.



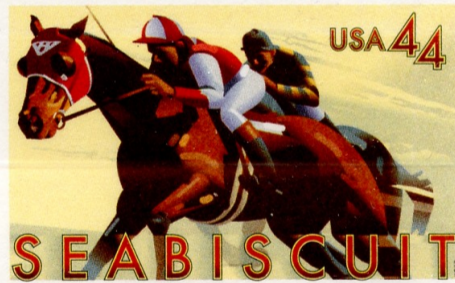
THE YEAR 2005 SAW THE APPEARANCE OF AN UNUSUAL STAMP SUBJECT: ASTRONOMICAL CONSTELLATIONS. INCLUDED ON THE BLOCK OF FOUR STAMPS IS ONE SHOWING PEGASUS, THE LEGENDARY FLYING HORSE.

THE HORSE ON UNITED STATES STAMPS



USA 41

IN 2007, AN ENVELOPE WAS PRODUCED WHICH SHOWED THREE WILD HORSES GALLOPING AGAINST A MOUNTAINOUS BACKGROUND.



THE RACEHORSE SEABISCUIT IN HIS EPIC RACE BEATING WAR ADMIRAL IN 1938 WAS THE SUBJECT OF AN ENVELOPE ISSUED IN 2009.

THE HORSE ON UNITED STATES STAMPS



AN INNOVATION FOR THE POSTAL SERVICE WAS THE CREATION OF COMMEMORATIVE STAMPS IN THE FORM OF COILS RATHER THAN SHEETS. A SERIES OF TEN TERRITORIAL OR STATE FLAG STAMPS WAS ISSUED EACH YEAR UNTIL EACH WAS REPRESENTED, FOR A TOTAL OF SIXTY STAMPS. THE ONLY STATE WITH A HORSE ON ITS FLAG IS KENTUCKY, AS SHOWN HERE.



IN 2009, A STRIP OF FOUR STAMPS WITH A CONTIGUOUS DESIGN CELEBRATED THE TRADITIONAL THANKSGIVING DAY PARADE. A COWBOY TWIRLING HIS LARIAT IS RIDING A WHITE HORSE, THE DESIGN SPLIT BETWEEN THE TWO RIGHT-HAND STAMPS.



THE COMMEMORATION OF THE CIVIL WAR CONSTITUTES ILLUSTRATIONS OF TWO SIGNIFICANT EVENTS OF THE WAR FOR EACH YEAR FROM 1861 THROUGH 1865. THE STAMPS FOR THE BATTLE OF MANASSAS (BULL RUN) IN 1861 AND THE BATTLE OF ANTIETAM IN 1862 BOTH SHOW MANY HORSES ON THE BATTLEFIELD.

THE HORSE ON UNITED STATES STAMPS



CHARACTERS FROM PIXAR MOVIES ARE SHOWN ON THIS STRIP OF STAMPS ISSUED IN 2012. THE HORSE FROM *Toy Story* APPEARS ON ONE OF THEM.



AS PART OF A SERIES OF AIR MAIL STAMPS SHOWING TYPICAL REGIONAL LANDSCAPES, THIS 2012 ISSUE REPRESENTS LANCASTER COUNTY, PENNSYLVANIA. A CLASSIC AMISH HORSE AND COACH APPEAR NEAR THE CENTER OF THE STAMP.



THE CONTINUATION OF THE CIVIL WAR SERIES HAS AS ITS SUBJECT FOR 1863 THE BATTLE OF GETTYSBURG, THE LARGEST BATTLE OF THE WAR AND THE POINT AT WHICH THE UNION BEGAN ITS CAMPAIGN TOWARD VICTORY.

THE HORSE ON UNITED STATES STAMPS



THE 2014 LUNAR NEW YEAR STAMP CELEBRATES THE YEAR OF THE HORSE, AND THE MAIN DESIGN SHOWS DRUMS, A TRADITIONAL PART OF THE CELEBRATION, AND A SMALL GOLD HORSE IN THE UPPER LEFT CORNER.



THE BATTLE OF NEW ORLEANS ISSUE OF 2015 IS A SCENE SHOWING ANDREW JACKSON RALLYING THE AMERICAN DEFENDERS OF THE CITY AS THE BRITISH TRY TO LAND THEIR TROOPS. THE BATTLE ACTUALLY TOOK PLACE AFTER THE PEACE TREATY WAS SIGNED, DUE TO THE DELAY CAUSED BY SEA TRAVEL.



THE FINAL ISSUE OF THE CIVIL WAR SERIES ILLUSTRATES THE BATTLE OF FIVE FORKS, WITH NUMEROUS HORSES IN ACTION. IT WAS PAIRED WITH A STAMP SHOWING LEE'S SURRENDER AT APPOMATTOX, VIRGINIA

THE HORSE ON UNITED STATES STAMPS



THE HUNDREDTH ANNIVERSARY OF THE CREATION OF THE NATIONAL PARK SERVICE WAS COMMEMORATED IN JUNE, 2016 BY THE ISSUE OF A PANE OF SIXTEEN STAMPS SHOWING SCENES FROM DIFFERENT NATIONAL PARKS. ONE OF THESE WAS ASSATEAGUE ISLAND, HOME TO MANY FREE-ROAMING PONIES, OF WHICH SEVERAL ARE SHOWN ON THE STAMP.



FOR CHRISTMAS 2017, A BOOKLET OF STAMPS WAS ISSUED WITH FOUR DESIGNS, EACH OF WHICH SHOWED SOME DETAIL FROM A WELL-KNOWN CHRISTMAS SONG. ONE OF THEM SHOWS A HORSE WITH SLEIGH BELLS ON HIS HARNESS AND THE LYRICS, "*one-horse open sleigh*" FROM *Jingle Bells*.

THE HORSE ON UNITED STATES STAMPS



DURING THE ROOSEVELT ADMINISTRATION IN THE 1930S, A PROGRAM WAS INITIATED TO PROMOTE THE ARTS WITH GOVERNMENT FINANCING. ONE FACET OF THIS WAS THE DECORATION OF POST OFFICES WITH MURALS BASED ON LOCAL THEMES. THERE IS A MOVEMENT TO PRESERVE AS MANY OF THESE AS POSSIBLE, AND THESE STAMPS ARE PART OF THIS. ONE, FROM THE ANADARKO, OKLAHOMA OFFICE, SHOWS A GROUP OF NATIVE AMERICANS ON HORSEBACK TRAVELING WITH THEIR FAMILIES AND THEIR BELONGINGS CARRIED ON TRAVOIS.

The End