

Dogs on United States Stamps



"Dogs are superior to humans as companions. They do not quarrel or argue with you. They never talk about themselves, but listen to you while you talk about yourself, and keep up an appearance of being interested in the conversation."

Jerome K. Jerome

Dogs on United States Stamps

1893



The first time a dog appears on a U.S. stamp is on the Columbian issue's 30¢ value, lying on the floor just above the "LA" of "LA RABIDA".

1898



Another dog is on the 50¢ value of the Trans-Mississippi issue, where it is lying to the right of the burros.

1948



The next dog depicted is the small one leading the wagons in the foreground of the Fort Kearny issue.

Dogs on United States Stamps

1948



An almost invisible dog is behind the man inside the lower right corner of the triangular frame.

1959



A dogsled team is part of the design on the stamp issued commemorating Arctic Exploration.

1963



This Norman Rockwell illustration shows a dog running beside a mail carrier and a young boy.

Dogs on United States Stamps

1966



1971



1972



1973



A large mongrel is the main subject of a 1966 stamp calling for humane treatment of animals, while dogs comprise minor design elements of the Missouri Statehood, Mail Order Centennial and Post Rider stamp issues of 1971, 1972 and 1973 respectively.

Dogs on United States Stamps

1979



A German Shepherd guide dog is the primary subject of this stamp honoring seeing-eye dogs.

1982



On this block of stamps issued for Christmas, three stamps have dogs in the design.

1982



Also a Christmas issue, this post card rate stamp features a cocker spaniel puppy.

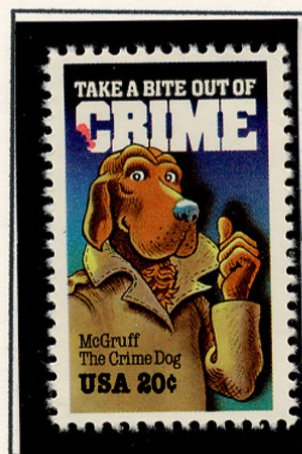
Dogs on United States Stamps

1984



Eight different breeds of dogs are pictured on this block of four stamps. They are a Beagle, Boston Terrier, Chesapeake Bay Retriever, Cocker Spaniel, Alaskan Malamute, Collie, Coon Hound and American Foxhound.

1984



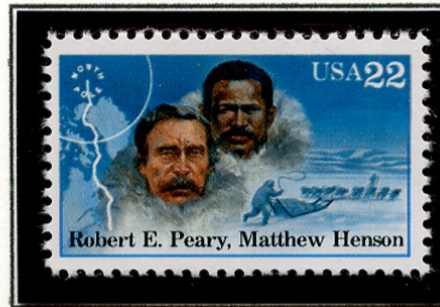
1986



The Crime Prevention and Love stamps above have something new in common - the main subject of each is a cartoon dog.

Dogs on United States Stamps

1986



Another dogsled team appears on the stamp for the Robert Peary/ Matthew Henson Arctic Explorers issue.

1990



On this Classic Films issue, Toto the terrier is honored with his pal Judy Garland for their *Wizard of Oz* performance.

1992



The 500th anniversary of Columbus' discovery of America was commemorated by reprinting the entire set on five souvenir sheets using the original dies. The 30¢ value again shows a dog just above the painting's title.

1994



On the first of twelve annual Chinese New Year stamps, this strange-looking creature appears for the Year of the Dog.

Dogs on United States Stamps

1995



One of the stamps in the 1995 Earth Day issue shows a small dog on the beach.

1995



The Comic Strip Classics pane of twenty stamps includes two with dogs on them. The Yellow Kid and his dog are on one, and Sandy and Little Orphan Annie on the other.

Dogs on United States Stamps

1996



One of this Christmas issue strip of four stamps shows the family dog lying in front of the fireplace with his people.



It was also issued in the form of a booklet of twenty stamps with five repeats of the design.

Dogs on United States Stamps

1998



The Klondike Gold Rush is commemorated by a stamp showing prospectors dragging and pushing their sleds across the pass. A husky or malamute appears behind the man pushing the first sled.

1998



The centennial of the Trans-Mississippi Exposition commemorative stamps was honored by a miniature sheet containing reprints of each stamp in a bi-color format, as originally intended in 1898. On the 50¢ stamp the dog is between the burro and the border.

1998



The *Bright Eyes* booklet pane of pet caricatures includes a hound on the second stamp from the top.

Dogs on United States Stamps

2000



This strip of stamps drawn by children illustrating their ideas of the future includes one stamp with a pet dog wearing a space helmet.

2001



The American Illustrators pane has a large dog next to the Kewpie Doll on one stamp.

2001



The need to limit the excess number of abandoned puppies and kittens led to this pair of stamps, one each for cats and dogs.

Dogs on United States Stamps

2001



The stamp issue honoring Charles Schultz' Peanuts comic strip features not Charlie Brown, but his pal Snoopy the beagle.

2004



2005



2006



2008



Dogs appear on a stamp in each of the four Disney Characters issues: Goofy, Pluto, Lady and the Tramp, and Pongo and pups.

Dogs on United States Stamps

2004



In 2004, a package of fold-up notecards with images of the Disney stamps from that year were offered by USPS. The inside had three pages for a message and the outside had the postage and a space for the address.

Dogs on United States Stamps

2005



The 1994 "Year of the Dog" stamp was reissued as part of a sheet showing all twelve of the Lunar New Year stamps with a new 37¢ denomination.

2006



Rowlf the Dog makes his presence known on this stamp honoring Jim Henson's Muppets

2007



In a reprise of the Chinese New Year series of stamps, all twelve were again reissued on one pane with the denominations raised to 39¢.

2009



Taken from a photograph of the Iditarod race, the Alaska fiftieth anniversary of statehood stamp shows a dogsled team against a mountainous background.

2009



This portrait of Lassie comes from a pane of twenty stamps illustrating favorite old black-and-white television shows.

Dogs on United States Stamps

2010



A pane of stamps depicting five dogs and five cats was issued to promote the adoption of pets from animal shelters.

2010



From a sheet of stamps illustrating characters out of comic strips, Odie appears with his pal Garfield the cat.

2011



Owney, the Postal Dog was a mutt who found a place to sleep on mail bags in Albany, New York. Postal employees fed and cared for him, and he had a habit of riding in the postal wagons and eventually on Railway Post Office cars. Owney became a mascot and good luck charm, as no train he traveled on ever was in a wreck. Workers attached tags from mail bags to his collar to show his travels. Owney died in 1897, and his body was preserved and is on display in the National Postal Museum.

Dogs on United States Stamps

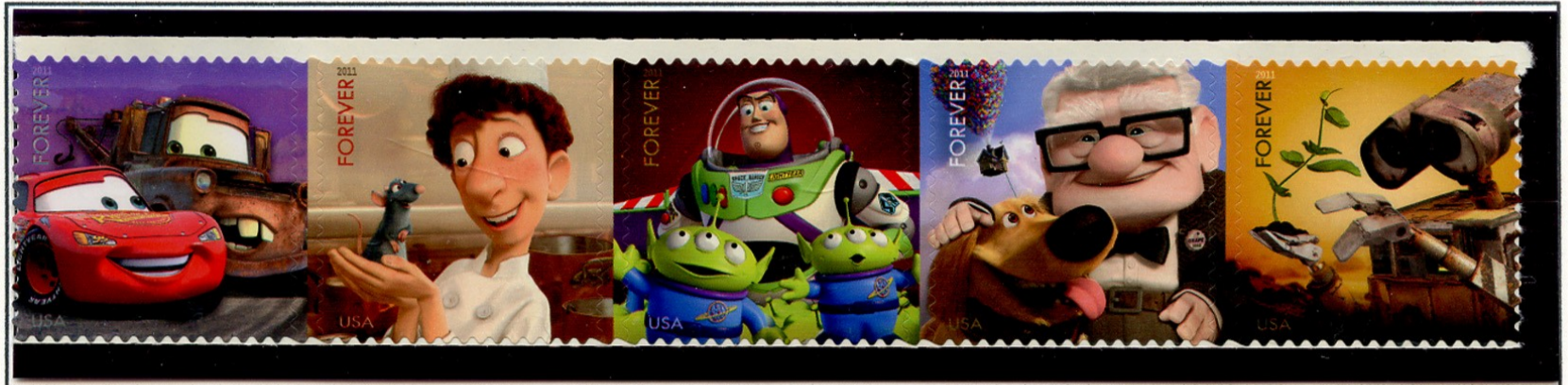
2011



In 2011, a pane of 16 stamps was issued promoting ways to improve the environment under the title "Go Green". Three stamps on the pane show dogs, all in the second row. The "choose to walk" and "step by step" stamps are paired picturing a dog on a leash, and next to it is a dog chewing a bone sitting next to his master creating a compost pile.

Dogs on United States Stamps

2011



A cartoon dog appears as a major part of one stamp on these five designs illustrating characters from Pixar movies.

2012



This block of four stamps pays tribute to working dogs. They are a guide dog, a therapy dog, a tracking dog and a search-and-rescue dog. They are denominated 65¢, the new 2012 rate for a second-ounce or an oversize card.

Dogs on United States Stamps

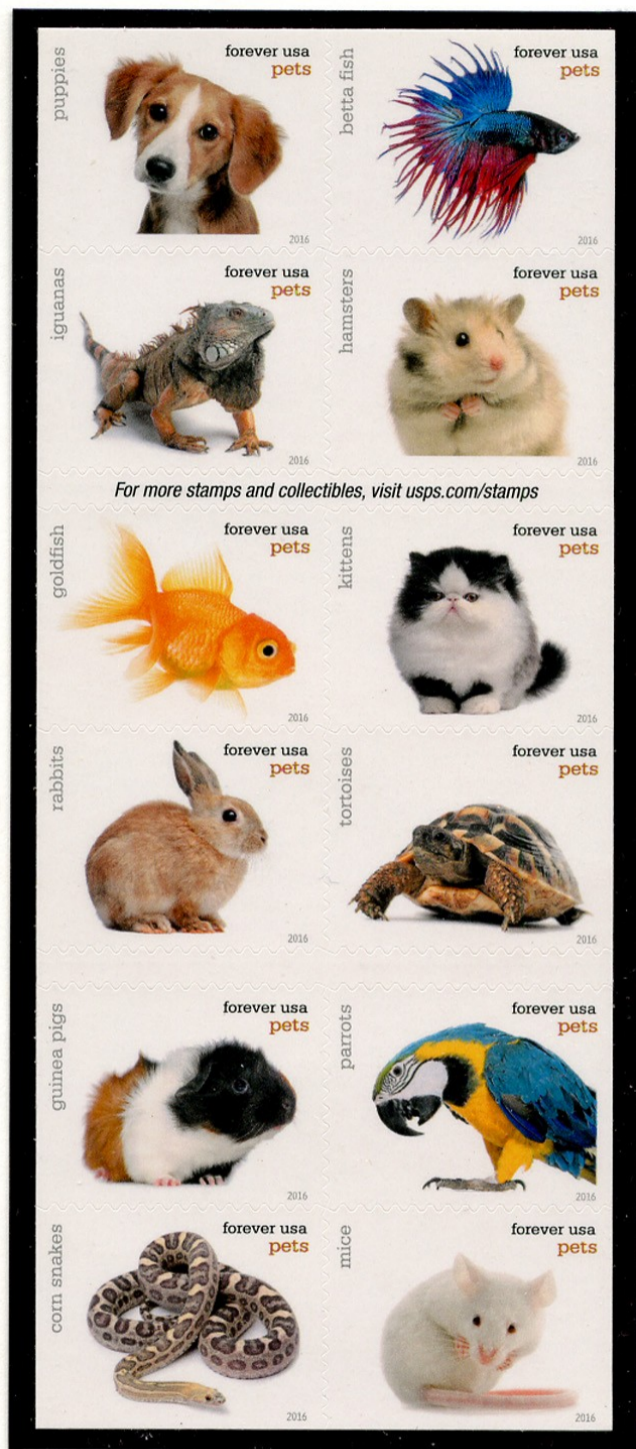
2015



To celebrate the fiftieth anniversary of Charles Schultz's Peanuts comic strip, the Postal Service chose to use typical scenes from the strip for its 2015 secular Christmas issue. All of the strip's characters except Woodstock, the bird, appear in this booklet of twenty stamps. Snoopy the beagle is on both stamps in the second row down and again on the left stamp in the fifth row down.

Dogs on United States Stamps

2016



In August 2016, a double-sided booklet was issued illustrating various types of pets. The upper left stamp on the inside shows a hound puppy and the lower right stamp on the outside features an Golden Labrador Retriever. The cover itself is illustrated with the same design as the puppy stamp inside.

Dogs on United States Stamps

2018



The television character Scooby-Doo, created in 1969, appears on a stamp issued in July, 2018. It is intended to highlight a new program called *Scooby-Doo Doo Good* designed to encourage protection of the environment by young persons.

2019



Four dog breeds appear on this block of stamps honoring the animals which currently serve in the armed forces. They perform multiple functions, including service as guard dogs, search and rescue, as well as drug and explosive detection.

Dogs on United States Stamps

