



First State Philatelist

Vol.22#8

The Newsletter of the Brandywine Valley Stamp Club, Wilmington, DE

April 2019

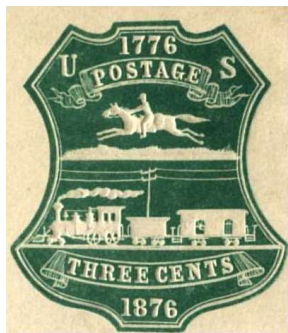
Club Banquet April 10

We're expecting a big crowd for the annual Club Banquet. We'll be at the Ed "Porky" Oliver Golf Club, starting at 6:00 pm. Unfortunately, the room is full and no more sign-ups are being taken. The highlight of the evening is a general trivia quiz with prizes for the winners, led by Father Lentini. (Golf Club address is 800 N Dupont Rd, Wilmington, DE 19807; note that the bridge on Rt. 100/N Dupont Rd is open again).

Highlights from March

We had 23 in attendance at the March meeting. Karl Autenreith won the 50/50 (\$20) and donated half of it back to the club (thanks!). The pre-meeting silent auctions will continue (except at the banquet). Please bring no more than 5 lots to a meeting. At the meeting we seconded nominations for the slate of APS officers that is standing for the next election.

March is always the chance to find out what fellow club members have been up to. We heard great presentations from four members. Ron Majors shared patriotic covers of the US Civil War from Canada. Ed Siegelson shared his love of baseball, especially Brooklyn baseball. Gerry Moss shared with us some of his collection of plate cracks. John Howker shared his 1876 Centennial Stamped Envelopes. These were the first ones issued that did not feature a political figure. Thanks to Marnie King for taking minutes at the meeting last month.



DELPEX 2019 – almost here!

Just over a week until DELPEX 2019. Just a few reminders:

- Bring your surplus stamp magazines for the giveaway table.
- Bidboard Catalog is available on the web page. 545 lots total include almost 100 bargain "Table Lots!" Winning Advice: "Bid Early, Bid Often!"
- Check out the BVSC "Club Exhibit" and vote for your favorite exhibit at the show.
- Remember to buy your show cover on the way into the show.
- Set-up starts at 7 am (coffee and donuts for all earlybirds). Please join us!
- There will be food available this year- no need to pack a lunch.

overflow News

At the February meeting we received the resignation of Gates Clarke as one of the club's Directors. Following protocol, the remaining Directors nominated Greg Ajamian for the open spot. This was unanimously seconded and approved by the membership.



Left: Bob Rufe receiving a "stamp" tie from our January speaker, Scott English, Executive Director of the American Philatelic Society. Photo by John Graper.

Brandywine Valley Stamp Club

APS Chapter #268

www.brandywinevalleystampclub.com

2018-19 Officers

President	Bob Rufe
Vice President	Walt Connelly
Treasurer	John Howker
Secretary	Jean Woods
Board of Directors	Greg Ajamian
	John Graper
	Tom Pesikay
Newsletter Editor	Jean Woods
Program Chair	Bob Swed
DELPEX Show	
Chairman	John Howker

The club usually meets on the second Wednesday of each month at The Summit retirement village (5850 Limestone Road Hockessin, DE 19707). In addition, meetings of the Stamp Swap Club are planned three to four times during the year at the Brandywine Hundred Library (1300 Foulk Rd., Wilmington); see program schedule for details.

Annual dues are \$15.00 and are due in January. Send a check made out to BVSC to: John Howker, 513 Ridgeview Drive, Hockessin, DE 19707.

Newsletter

The *First State Philatelist* is the official publication of the Brandywine Valley Stamp Club and is published 10 times annually. All opinions expressed are solely those of the authors and/or editor. Please address all correspondence to:

Jean Woods, Editor
412 Armstrong Ave.
Wilmington, DE 19805-1002
Home: (302) 633-4468
e-mail: jwoods65@verizon.net

BVSC 2018-2019 Program

April 10 – Annual Club Banquet, Ed “Porky” Oliver Country Club, starting at 6:00 pm.
Sign-up required! Reservations now closed.

May 8 – BVSC Meeting at The Summit. Our speaker will be Harry Charles, who will be speaking on the Portola Festival of 1909. Doors open 6:30, meeting starts at 7 pm.

Area Stamp Shows

April 13 – **DELPEX 2019** Stamp Show and Bourse, 10 am – 5 pm. Nur Shrine Center, 198 S. DuPont Hwy, New Castle, DE.

April 26-27 - **Lancopex 2019**, Farm & Home Center, 1383 Arcadia Rd., Lancaster, PA.

June 22 - **Eastern PA Stamp Show (EPASS)**, Allentown Philatelic Society, Jordan United Church of Christ, Allentown, PA

Tri-state Coin & Stamp Show, 10 am – 3:30 pm, 4th Sunday of every month, Sheraton Bucks County, Langhorne, PA

Merchantville Stamp Club Monthly Bourse, 9 am – 3 pm, 1st Saturday of every month, Martin Luther Chapel School Gym, Pennsauken, NJ

Happy Easter!



Sweet Home Alabama by Jean Woods

Alabama became the 22nd state in the Union on December 14, 1819. To celebrate the bicentennial the USPS recently issued the Alabama Statehood Stamp, which features a scenic sunset view of the state overlooking Talladega National Forest. The photo used for the stamp was taken by Alabama photographer Joe Miller. “Since becoming America’s 22nd state on Dec. 14, 1819, Alabama has built a rich history grounded in the diversity, tradition and hard work of its people, and the natural beauty and wonderment of its land,” said USPS official Isaac Cronkhite at the first day ceremony.



Spanish explorer Hernando de Soto visited the state in 1539 and claimed the land for Spain. At the time the area was occupied by a number of different Native American tribes including the Chickasaw, Choctaw, Creek, Koasati, Mobile, and Cherokee. The origins of the name “Alabama” remain unclear but appear to be the name used by the Alabama tribe of Native Americans for themselves. Parts of the state were also claimed by the French and as part of the British Georgia and Carolina Colonies. The French established towns at Mobile and Biloxi. A complex period of history followed involving the French and Indian War, the Seven Years War, and the Revolutionary War. Finally, by 1813 the Spanish were defeated, all claims by other states were settled, and all of Alabama became part of the Mississippi Territory. The Alabama Territory was split off in 1817 when Mississippi became a state. The Indian Removal Act of 1830 settled a long period of conflict with Native American tribes.



Montgomery is the state capital and Birmingham is the largest town. The state bird is the “Yellowhammer” (Yellow-shafted Flicker) and the state flower is the Camelia. The state ranks 30th in land area and 24th in population size. A native of the state is called an Alabamian.

Alabama seceded from the Union on January 11, 1861 and joined the Confederate States of America almost a month later. At the time, Alabama’s economy was largely dependent on cotton farming and 45% of the state’s population were slaves. Selma, Alabama was the site of an important Confederate munitions factory and naval ships were made on Mobile Bay. In 1864, the Battle of Mobile Bay gave the Union a foothold on the outer defenses of Mobile and the city was taken in 1865.



Following the Civil War Alabama endured a long period of discrimination and segregation. The state’s 1901 constitution disenfranchised many voters, including poor whites, and segregated schools. Further segregation and Jim Crow laws followed. Many African Americans left the state for the north in the early 1900s as part of the Great Migration. World War II led to an increase in factory jobs in the state and a move away from an agricultural economy. During WWII the Tuskegee Airmen trained in Alabama. Continued discrimination led to the rise of the civil rights movement in the state in the 1950s and 1960s. Notable Alabama events included Rosa Parks’ refusal to give up her seat and the resulting bus boycott and the Voting Rights March from Selma to Montgomery. The route of the Selma to Montgomery march is now commemorated as a National Historic Trail.



Alabama has come a long way from the agriculture-dominated economy of the Civil War era. One of NASA's key facilities, the George C. Marshall Space Flight Center, is in Huntsville, Alabama and continues to be a key part of important space achievements including the moon landing, Skylab, the Hubble Space Telescope, and the space shuttles. Alabama also has well developed sectors in education, health care, banking, and various heavy industries.



The list of famous Alabamians is long and includes athletes, authors, statesmen, entertainers, and many others. Congratulations Alabama on your 200th Anniversary!



Sources: USPS.com, Wikipedia, Google Images, StampWorld.com, Mystic.com

New Issues:



The new Priority Mail and Express Mail stamps commemorate the Joshua Tree and the Bethesda Fountain from New York's Central Park.



The California Dogface Butterfly graces the new Non-machineable rate issue (valued at 70¢).



The recent rate change also resulted in a new flag stamp and a new additional ounce stamp.

BVSC
c/o Jean Woods, Editor
412 Armstrong Ave.
Wilmington, DE 19805

ADDRESS SERVICE REQUESTED

