

THE
AMERICAN DESIGN SERIES
OF
UNITED STATES DEFINITIVE STAMPS



The American Design series of definitive stamps was introduced in 2002 and continued to have new varieties through 2014. The designs include examples of six typically American products dating from pre-Columbian times through the 1930s.

Though there are only six denominations in the series, each has from two to six varieties, including format, perforation, shades, tagging, appearance under ultraviolet radiation and minor design changes.

First day covers for all major varieties are included.

THE AMERICAN DESIGN SERIES

1¢ TIFFANY TABLE LAMP

March 16, 2007

March 7, 2008

Perforated 11 1/4 x 11



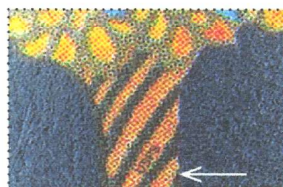
3749



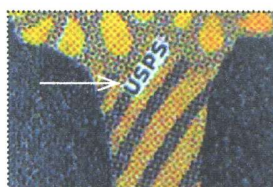
3749A

On the 2007 issue, the microprinted USPS is low on the lamp base and the stamp is dated 2007, while on the 2008 type, the USPS is high, on a white background and the date is revised to 2008.

2007



2008



THE 1¢ VALUE OF THIS SERIES DEPICTS ONE OF LOUIS B. TIFFANY'S CLASSIC STAINED GLASS LAMP SHADES, CONSTRUCTED BY A METHOD DEVELOPED BY HIM WHICH USES COPPER FOIL WRAPPED AROUND THE PIECES AND THE JOINTS BUILT UP WITH SOLDER RATHER THAN USING THE TRADITIONAL STRIPS OF H-SHAPED LEAD TO SEPARATE THE PIECES, WHICH HAD BEEN IN USE SINCE THE EARLIEST DAYS OF STAINED GLASS WINDOW CONSTRUCTION IN THE ELEVENTH CENTURY.

THIS STYLE OF LAMP WAS VERY POPULAR FROM THE LATE 1800S THROUGH THE 1930S, AND HAS HAD A REVIVAL SINCE THE 1970S.

THE AMERICAN DESIGN SERIES

1¢ TIFFANY TABLE LAMP

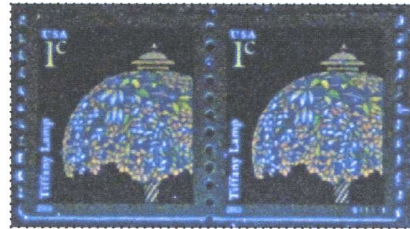
Coil Stamps

March 13, 2003



3758

2003 - Ultraviolet



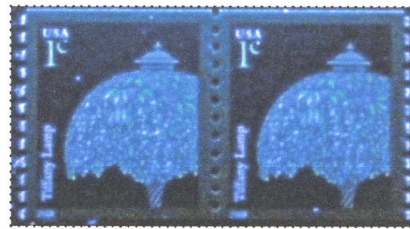
3758

June 7, 2008



3758A

2008 - Ultraviolet



3758A



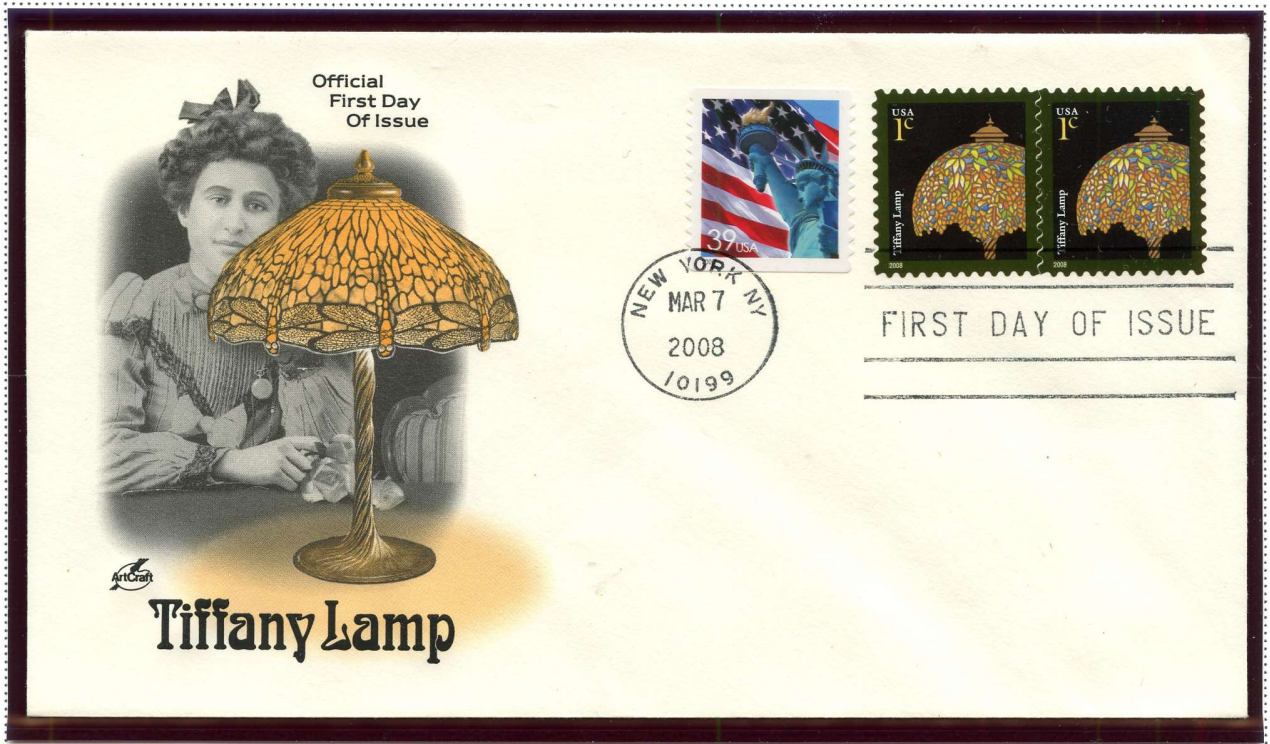
The date on #3758 is 2003 while that on #3758A it is 2008. The colors in the lamp shade are somewhat less saturated on #3758A under visible light, but are distinctly more different under long-wave ultraviolet illumination.

THE AMERICAN DESIGN SERIES

1¢ TIFFANY LAMPSHADE - 3/16/2007 - #3749

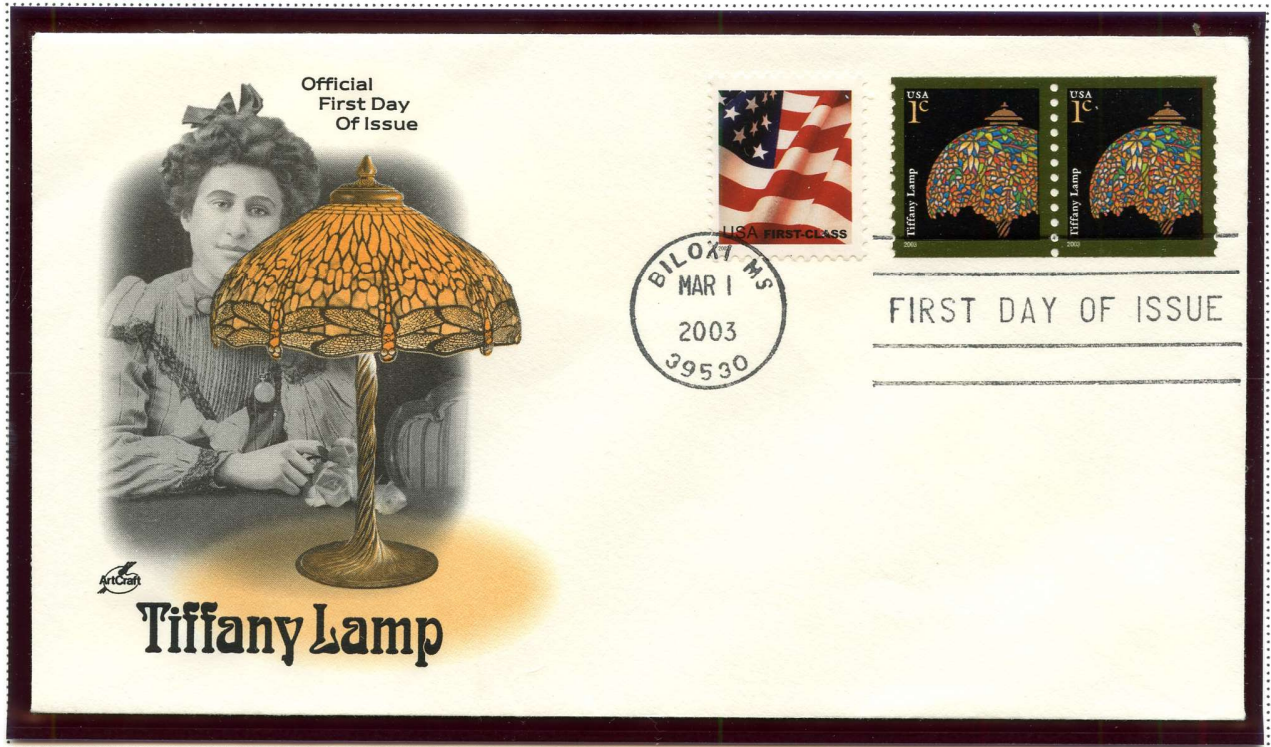


1¢ TIFFANY LAMPSHADE - 3/7/2008 - #3749A



THE AMERICAN DESIGN SERIES

1¢ TIFFANY LAMPSHADE - COIL STAMP - 3/1/2003 - #3758



1¢ TIFFANY LAMPSHADE - COIL STAMP - 6/7/2008 - #3758A



THE AMERICAN DESIGN SERIES

2¢ NAVAHO INDIAN NECKLACE

August 20, 2004

Perf. 11



3750

2004

Reprint



3750

A reprint appeared later in 2004 on which the turquoise border and the jewels are a much brighter color. Both varieties are dated 2004.

THE 2¢ VALUE OF THE SERIES IS ILLUSTRATED BY A SILVER AND TURQUOISE NECKLACE OF A TRADITIONAL DESIGN, THE SQUASH BLOSSOM, USED BY THE NAVAHO INDIANS AND OTHER TRIBES OF THE SOUTHWEST UNITED STATES.

THE AMERICAN DESIGN SERIES

2¢ NAVAHO INDIAN NECKLACE

December 8, 2005

Perf. 11 1/4 x 11 1/2



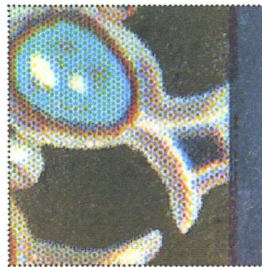
3751

December 8, 2005

Perf. 11 1/4 x 11



3752



3751



3752

The same design was issued with two different perforations and the same two color varieties in December 2005. Both types are dated 2006, later than the issue date. On #3751, there is no microprinting at all, while #3752 has "USPS" printed next to the middle stone on the right side. The first day cover has both of these varieties on it.

THE AMERICAN DESIGN SERIES

2¢ NAVAHO INDIAN NECKLACE

May 12, 2007

Perf. 11 1/4 x 10 3/4



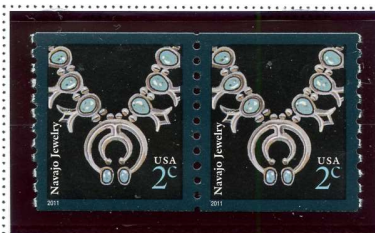
3753



Yet another perforation variety appeared on a stamp date 2007. The turquoise ink used differs from both of the previous issues. The microprinting was also moved to the left side of the stamp.

Coil Stamp

February 12, 2011

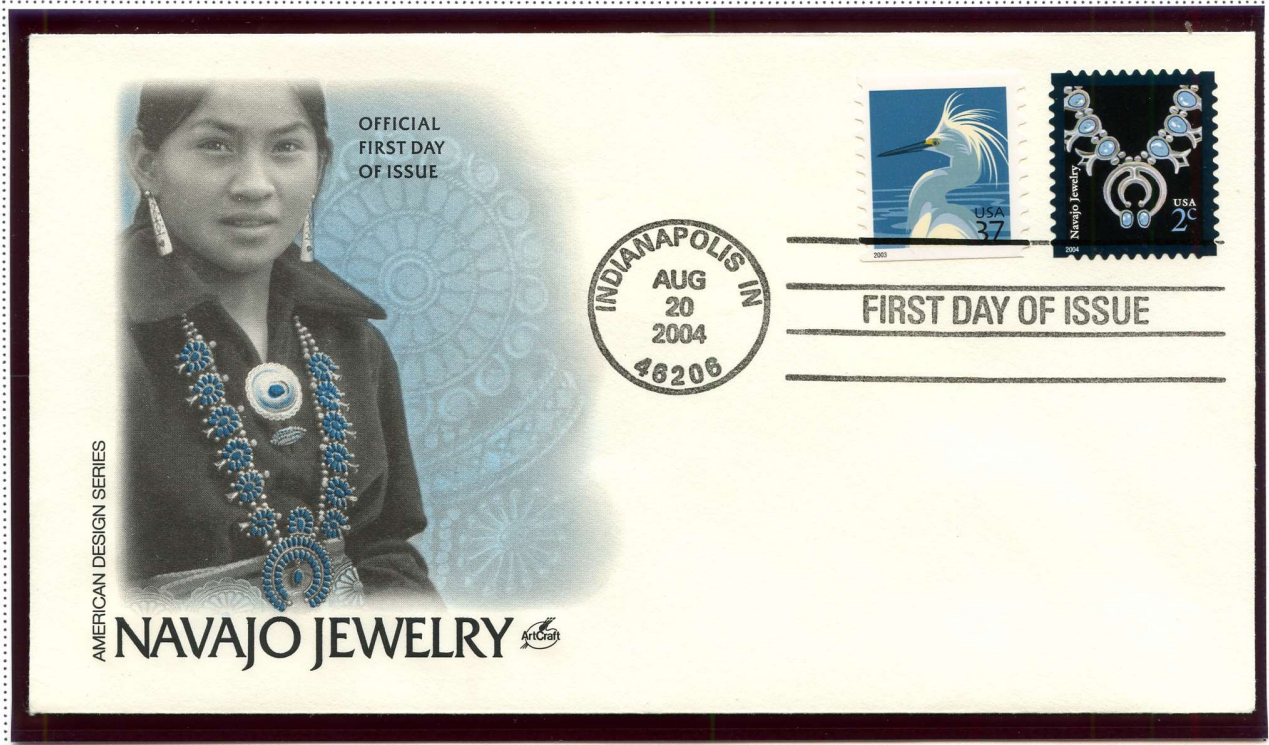


3758B

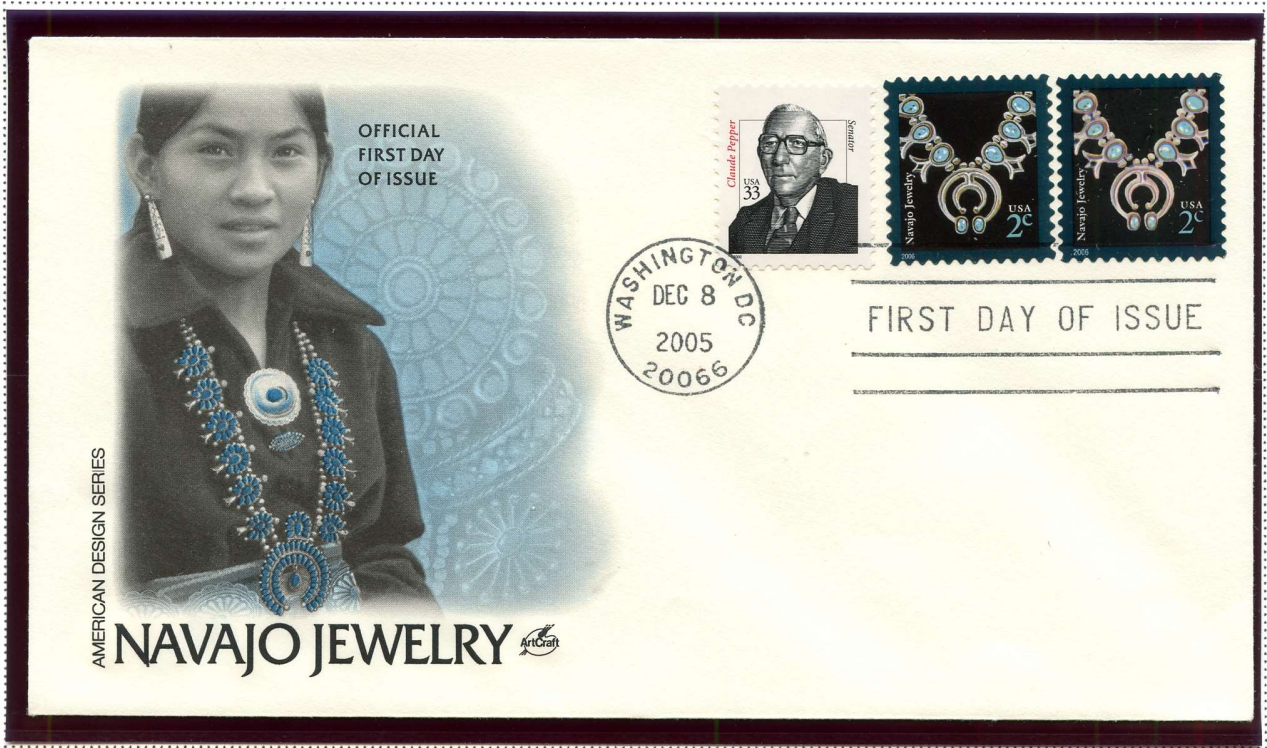
The coil type of the 2¢ design is one of the last major varieties of the series, not being issued until 2011. The microprinting is in the same location as on #3753 above.

THE AMERICAN DESIGN SERIES

2¢ NAVAHO NECKLACE - 8/20/2004 - #3750

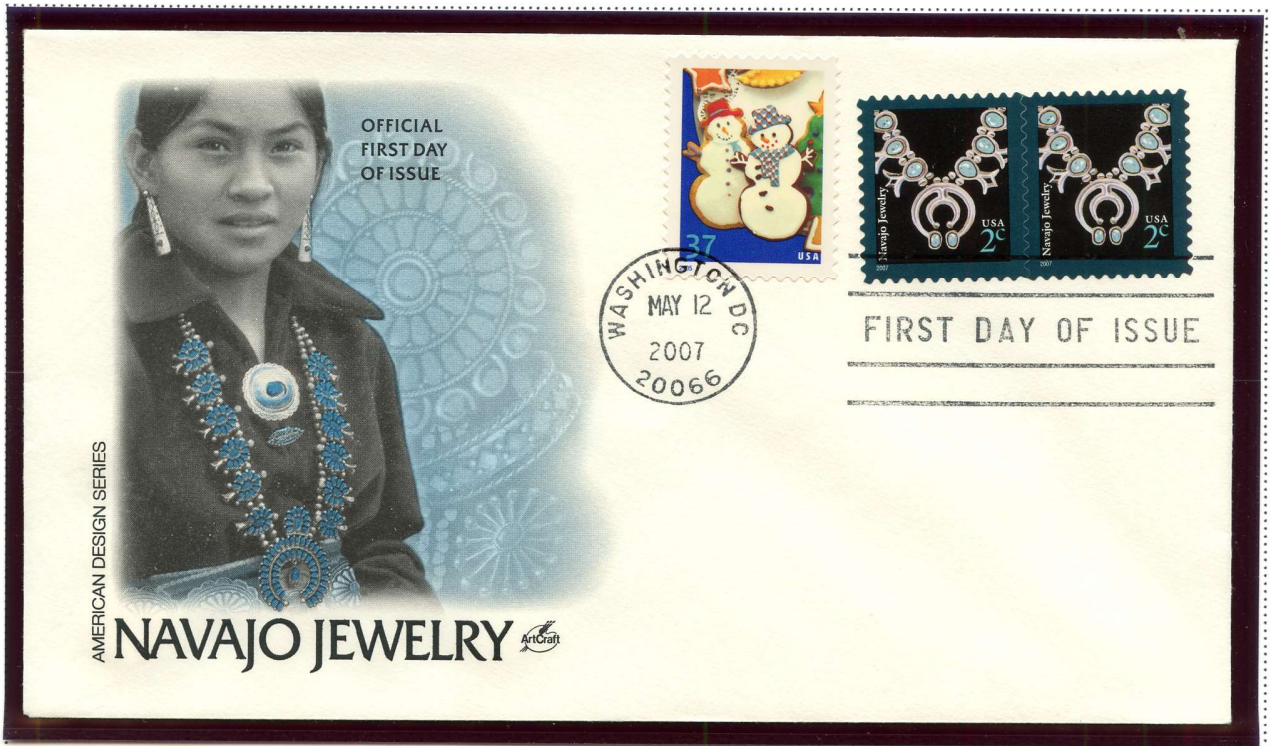


2¢ NAVAHO NECKLACE - 12/8/05 - #3751 & 3752

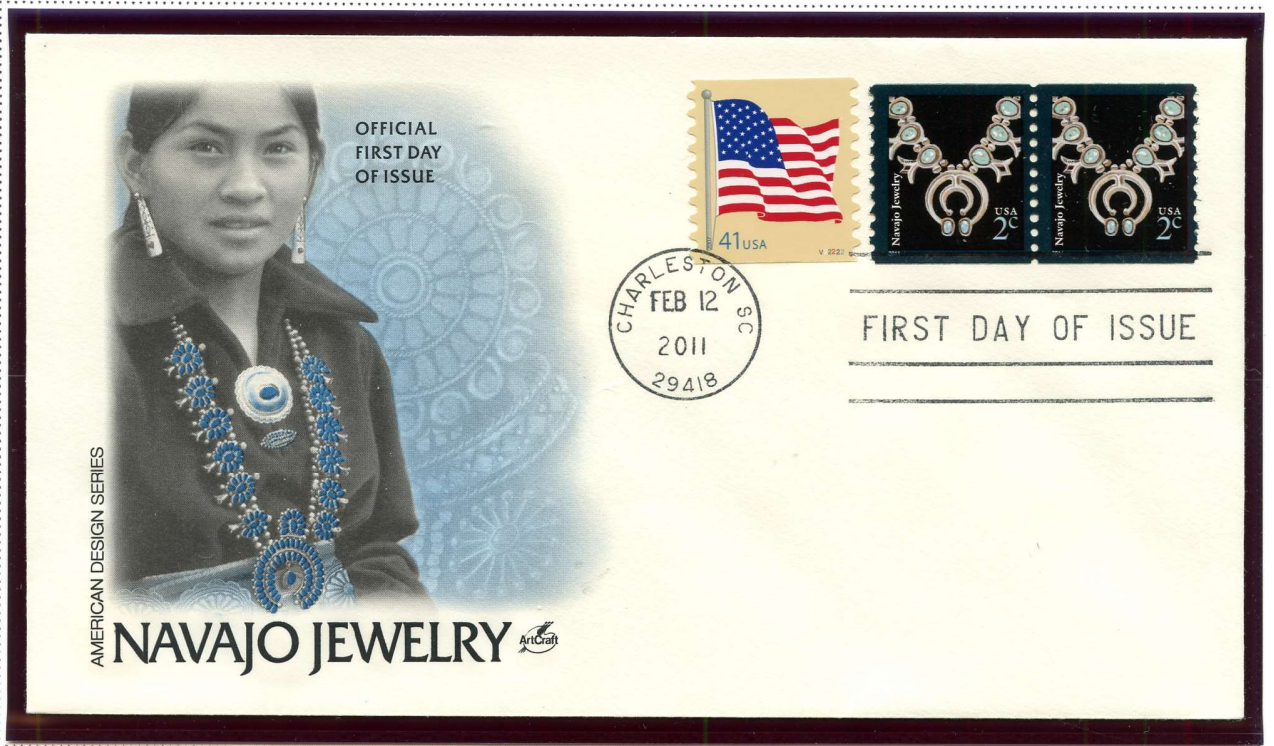


THE AMERICAN DESIGN SERIES

2¢ NAVAHO NECKLACE - 5/12/2007 - 3753



2¢ NAVAHO INDIAN NECKLACE COIL STAMP - 2/12/2011 - #3758B



THE AMERICAN DESIGN SERIES

3¢ COLONIAL SILVER COFFEE POT

March 16, 2007

Perforated 11 1/4 x 11



3754

Coil Stamp

September 16, 2005



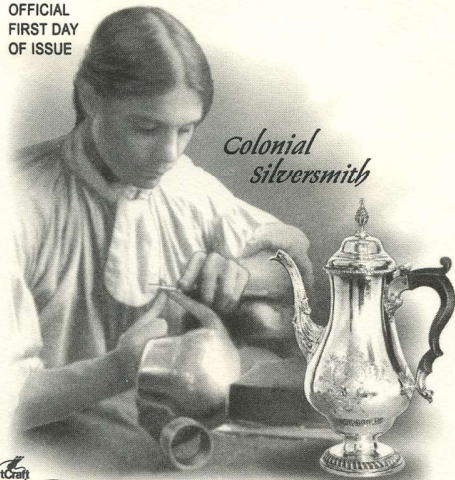
3759

A SILVER COFFEEPOT SIMILAR IN DESIGN TO THOSE
CREATED DURING AMERICA'S COLONIAL PERIOD BY
SUCH MASTER SILVERSMITHS AS PAUL REVERE IS
SHOWN ON THE 3¢ STAMPS OF THIS SERIES.

THE AMERICAN DESIGN SERIES

3¢ COLONIAL SILVER COFFEE POT - 3/16/2007 - #3754

OFFICIAL
FIRST DAY
OF ISSUE



*Colonial
Silversmith*

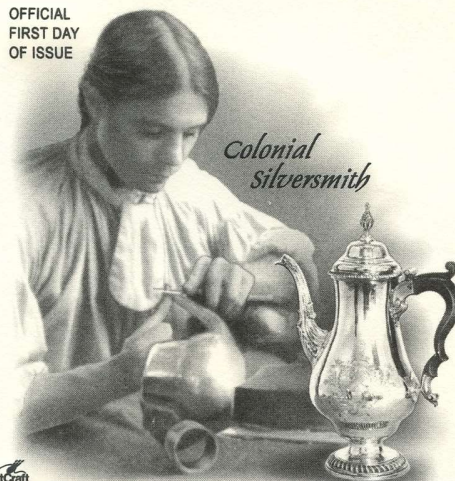
Silver Coffeepot



FIRST DAY OF ISSUE

3¢ COLONIAL SILVER COFFEE POT COIL STAMP - 9/16/2005 - #3759

OFFICIAL
FIRST DAY
OF ISSUE



*Colonial
Silversmith*

Silver Coffeepot



FIRST DAY OF ISSUE

THE AMERICAN DESIGN SERIES

4¢ CHIPPENDALE CHAIR

March 5, 2004

Perforated 10 3/4 x 10 1/4



3755

Coil Stamps

July 19, 2007



3761

January 2, 2014



3761A

On the left pair, the yellow and orange inks on the chair fluoresce under long-wave ultraviolet light, while those inks on the right pair do not. The 2007 issue has its date in the lower left margin, while the 2013 stamp has it at the upper left side, a unique difference from the rest of the series. The 2013 issue also has a paper with a shinier surface.

2007



2014



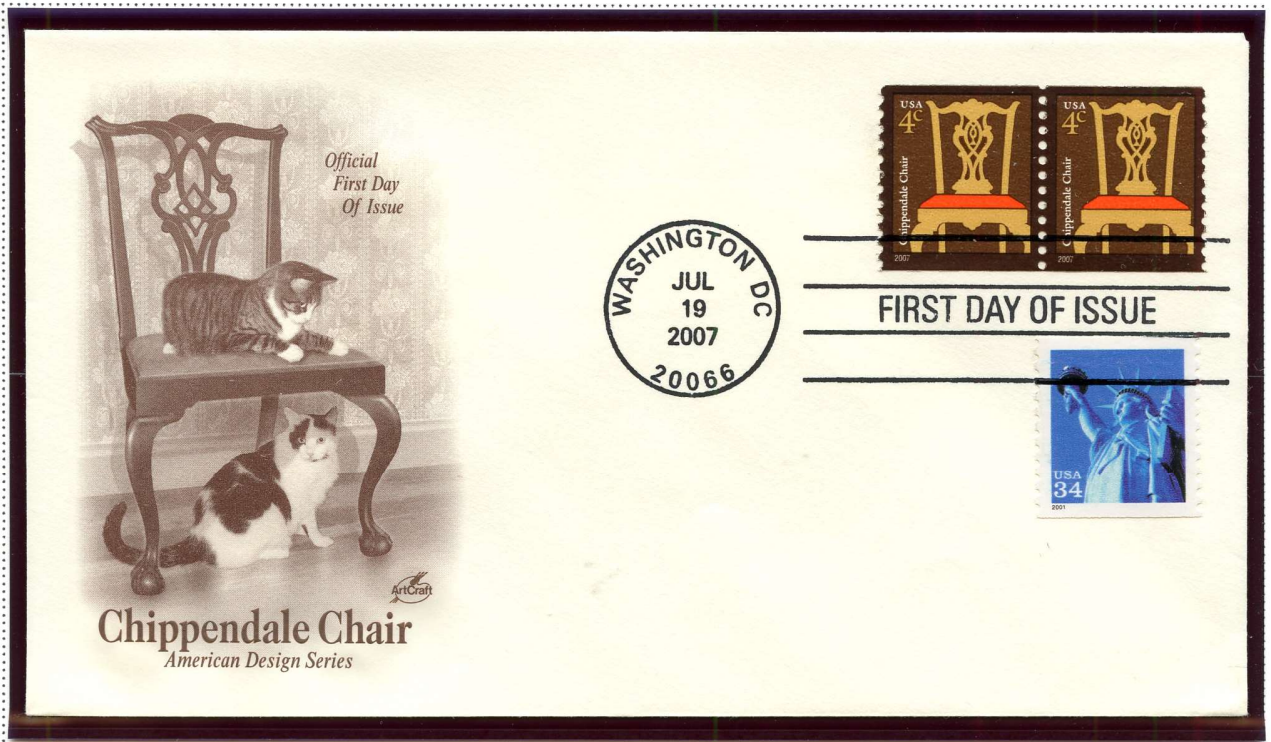
THOMAS CHIPPENDALE WAS AN ENGLISH CABINET MAKER AND DESIGNER WHO LIVED FROM 1718 TO 1779. HIS DESIGNS WERE CONSIDERED THE EPITOME OF BRITISH STYLE, AND IN 1754 HE PUBLISHED BOOK OF THESE DESIGNS. THEY THEN BEGAN TO APPEAR WORLDWIDE, WERE VERY POPULAR IN THE 18TH AND 19TH CENTURIES, AND ARE STILL PRODUCED TODAY. THE CHAIR SHOWN ON THESE 4¢ STAMPS IS A TYPICAL EXAMPLE OF HIS STYLE.

THE AMERICAN DESIGN SERIES

4¢ CHIPPENDALE CHAIR - 3/5/2004 - #3755

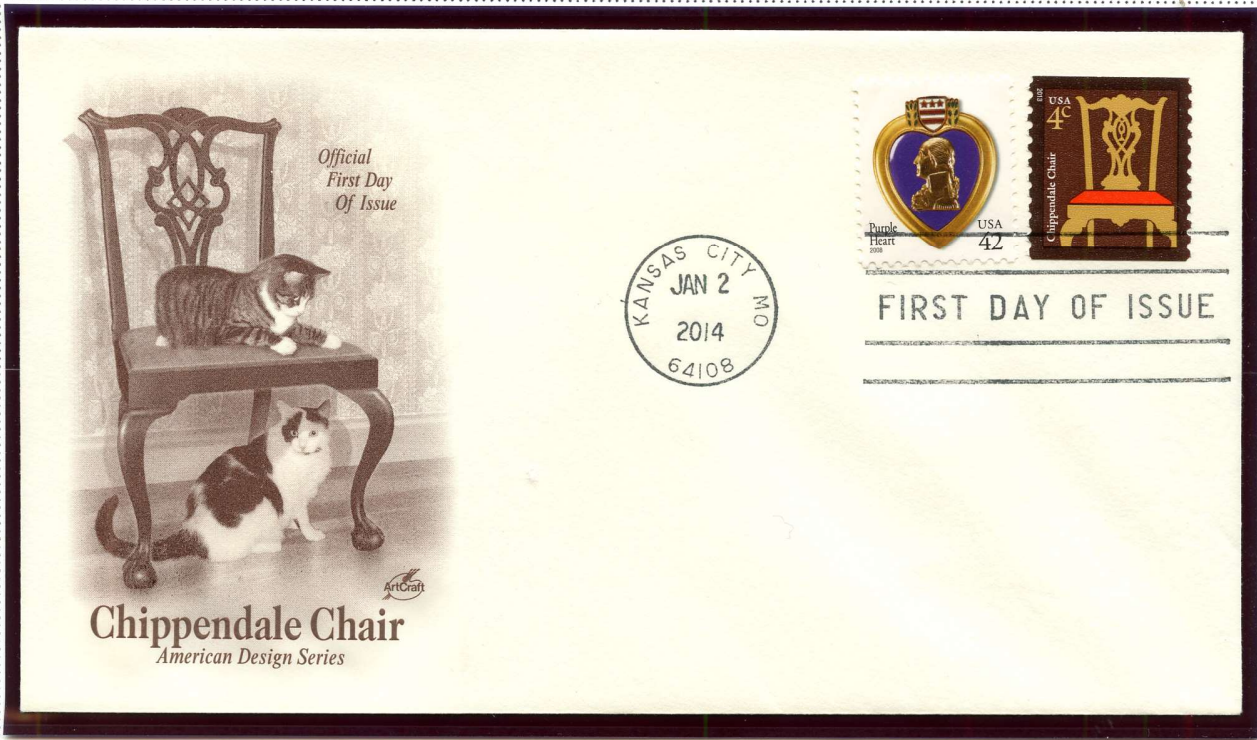


4¢ CHIPPENDALE CHAIR COIL STAMP - 7/19/2007 - #3761



THE AMERICAN DESIGN SERIES

4¢ CHIPPENDALE CHAIR COIL STAMP - 1/2/2014 - #3761A



THE AMERICAN DESIGN SERIES

5¢ TOLEWARE COFFEEPOT

June 25, 2004

Perforated 11 x 11 3/4



3756

The original issue of the 5¢ value of the sheet stamp has a grayish-brown background.

August, 2008

Perforated 11 x 10 3/4

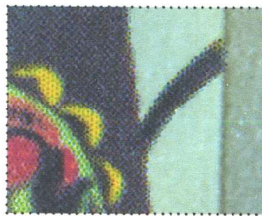


3756A



3756A

At sometime in August, 2008, the design of the 5¢ stamp was reissued in two new varieties. One had a beige background, while the other was lighter and more gray. The background of the lighter variety fluoresces under ultraviolet light while the darker one does not. Additionally, a microprinted "USPS" appears on the lower part of the handle on both varieties of the 2008 issue.



TOLEWARE, A TERM DERIVED FROM THE FRENCH *tôle peinte*, OR PAINTED SHEET METAL, IS SIMILAR TO JAPANING ON TIN AND IS MOST FREQUENTLY FOUND ON KITCHENWARE. IT IS OFTEN STENCILED, FREQUENTLY IN A PENNSYLVANIA DUTCH STYLE, AND WAS VERY POPULAR IN AMERICA IN THE 18TH AND 19TH CENTURIES.

THE AMERICAN DESIGN SERIES

5¢ TOLEWARE COFFEEPOT

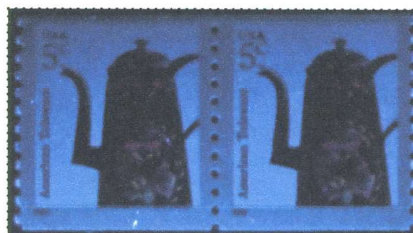
Coil Stamps

May 31, 2002



3612

Ultraviolet



2002



3612

Ultraviolet



On the upper 5¢ coil stamp, the first issue of this series, the border is grayish-brown and the background is grayish-white. The coffeepot itself is non-fluorescent. The lower variety has a brownish border and pinkish-beige background, and the red and yellow inks of the coffeepot glow brightly under long-wave ultraviolet radiation

THE AMERICAN DESIGN SERIES

5¢ TOLEWARE COFFEEPOT - 6/25/2004 - #3756



5¢ TOLEWARE COFFEEPOT COIL STAMP - 5/31/2002 - #3612



THE AMERICAN DESIGN SERIES

10¢ AMERICAN CLOCK

Perforated 11 1/4 x 11

January 24, 2003



3757

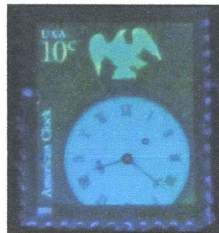
2013



3757a

The 2003 issue was printed on prephosphored paper and also had a block of phosphor atop the colored ink. The 2013 stamp was printed on plain with an overall phosphor coating later. The serpentine die dutting on the 2003 issue on plates 1-5 was changed in 2013 with plate 6 as well.

2003 - Ultraviolet



2003



Plates 1-5

2013 - Ultraviolet



2013

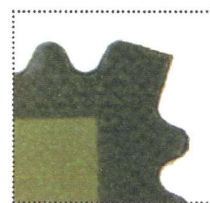


Plate 6

THE HIGH VALUE OF THE SERIES SHOWS A TYPICAL WALL CLOCK OF THE TYPE USED THROUGHOUT MUCH OF OUR NATION'S HISTORY, WITH ITS TYPICAL SPREAD-WINGED EAGLE PERCHED ON TOP OF THE CLOCK'S CASE.

THE AMERICAN DESIGN SERIES

10¢ AMERICAN CLOCK

Coil Stamps

August 4, 2006



3762

The original design of the 10¢ coil stamp is identical to the sheet stamps, except for the date in the selvage is 2006 rather than 2003.

*July 15, 2008
Tagged*



3763

*2013
Untagged*



3763a

A revised design appeared in 2008 in which the eagle atop the clock was slightly enlarged. The background became a smooth beige instead of the earlier gray dot pattern. In addition, the central "I" of the Roman numeral "VIII" was replaced by a microprinted "USPS". In 2013 plate 2 appeared but was still dated 2008, and phosphor tagging was discontinued.

2006

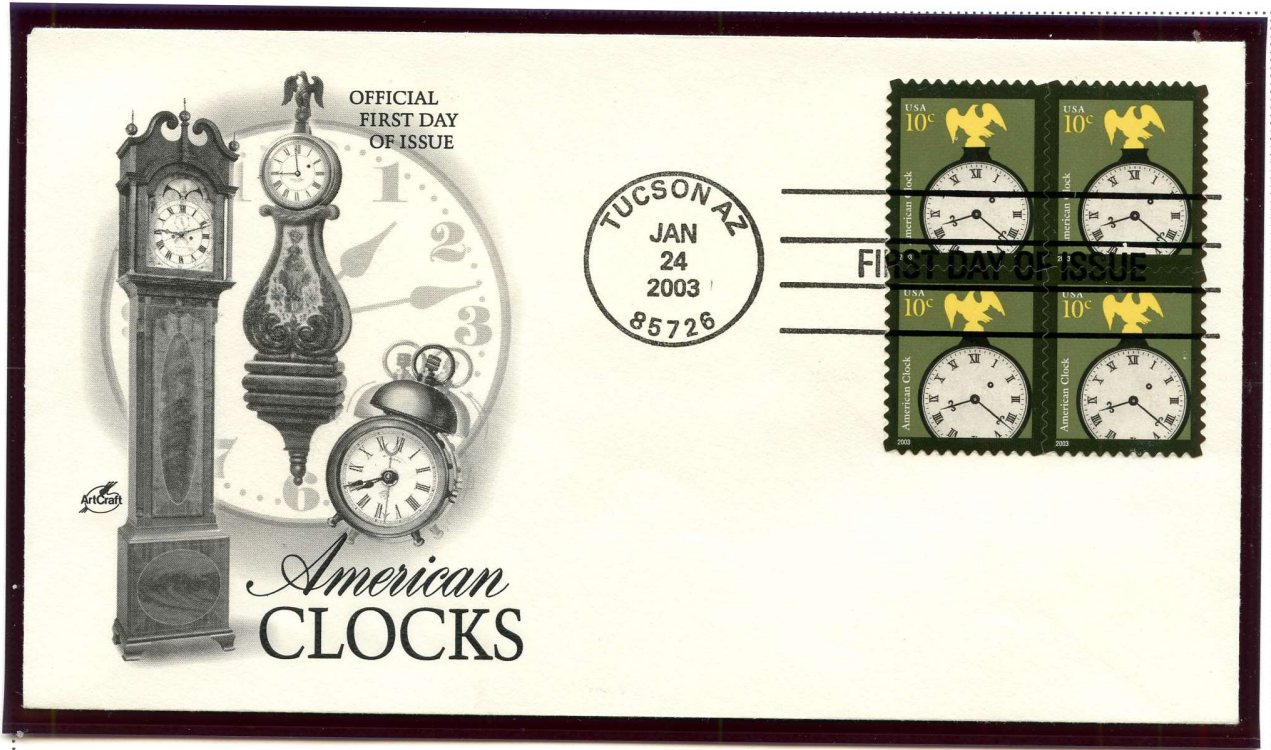


2008



THE AMERICAN DESIGN SERIES

10¢ AMERICAN CLOCK - 1/24/2003 - #3757



10¢ AMERICAN CLOCK COIL STAMP - 8/4/2006 - #3762



THE AMERICAN DESIGN SERIES

10¢ AMERICAN CLOCK COIL STAMP - 7/15/2008 - #3763



The End